



Cricket Valley Structures LLC.



SEE PAGE 6 FOR MODEL INFO



SCAN ME

Where Quality Craftsmanship Is A Lifestyle



Built On-Site

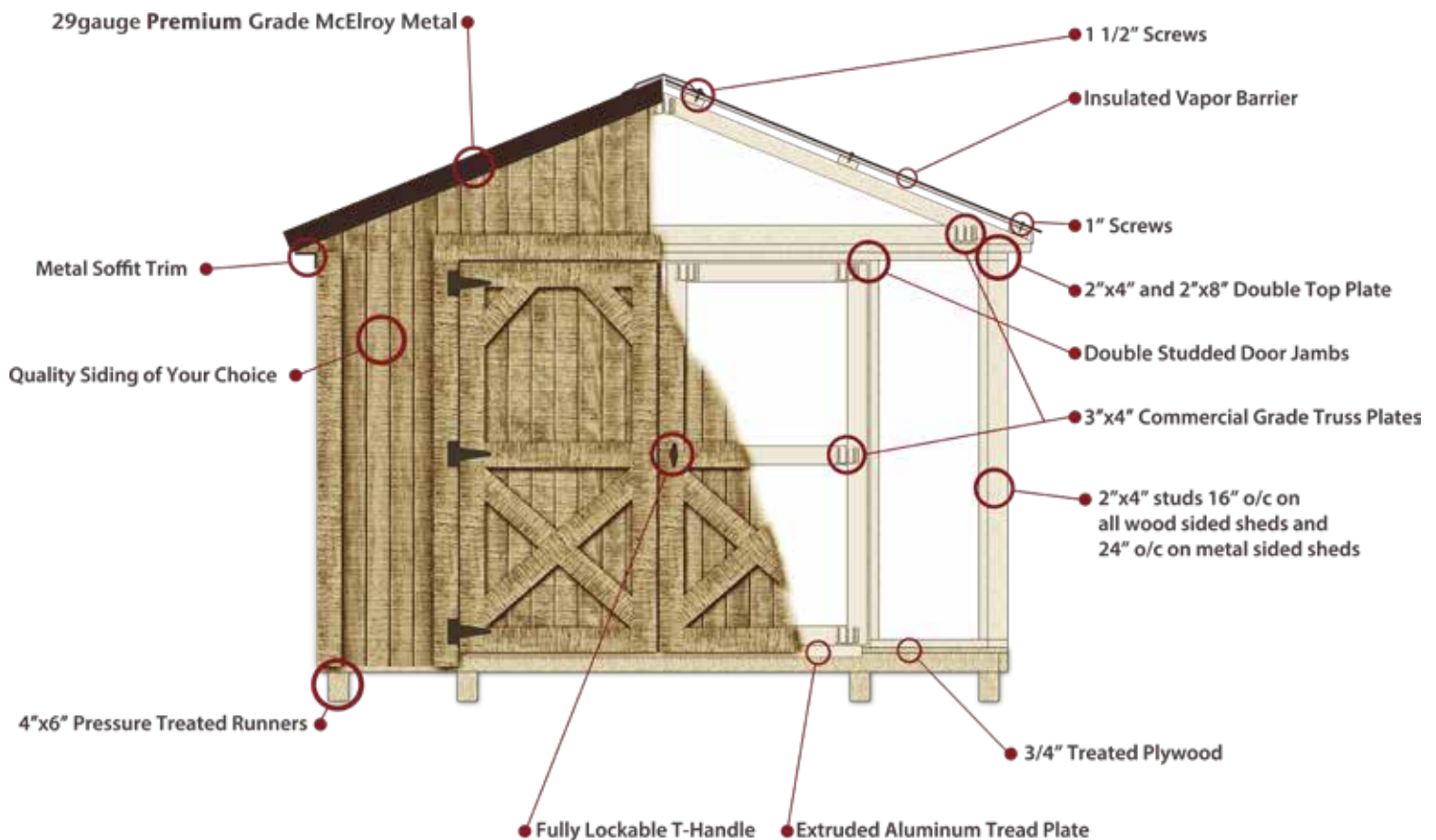


Rent-To-Own



Free Delivery!

Quality Construction



Quality and Service have long been our highest priority here at Cricket Valley Structures. From the very first barn we built in 2005 to the ones coming off the line today, we are continually looking for ways to improve our barns without making you pay a premium price for it. Quality is why we use a Premium Grade 2"x4" for all our studs, 2"x8" top plates, 3"x4" metal truss plates for our trusses and doors, 4"x6" runners.... the list goes on and on (Please refer to the "Quality Features" section on page 26 for more details). We greatly value you as a customer and even more as a person, therefore we believe you should be treated with the best customer care in the industry and we would be happy to supply you with a "best in class" Cricket Valley Structures shed. **We will stand behind the quality workmanship of our buildings with a 6 year warranty on all of our structures.**

Your new Workshop, Garage or Garden Shed is shown in the pages of this brochure. You can decide what model you would like; add windows, flower boxes, shutters and even extra doors if you would prefer. If you can't find the right style that fits your need, please talk to your local sales representative and we will be delighted to see if we can design a barn specifically to fit your needs.

Enjoy!

Your Cricket Valley Structures Team
cricketvalleystructures.com

Siding Choices

Premium Siding - Painted DuraTemp

- 50 Year Warranty
- Genuine Plywood.
- No splitting or cracking.
- Includes the paint color of your choice.

*See page 24 for color options

*Built On-Site barns are primed but not painted. (paint provided)

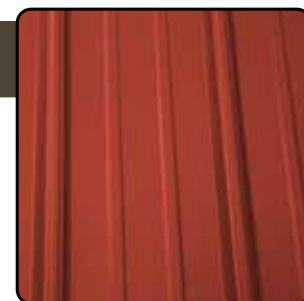


Roseburg
DuraTemp
Real Wood Siding

Metal Siding

- Maintenance Free.
- Paint Free.
- 40 Year Warranty.
- Clean look.

*See page 24 for color options




MCELROY
METAL

"When we received our barn it was so much more than I even imagined. You if you are waiting to find the perfect place to purchase you just did. Don't second guess it. You won't be sorry. The quality of this barn is beyond anything you could even imagine. We didn't have one issue at all. It's a dream come true. Thanks again for your skill and choice materials. It's awesome!"

B. Taylor



OPTIONS

- ON THIS 10x16
- Shutters | Gable Accents
 - Keystone Accents | 4x5 Ramp
 - Patrician Bronze / Quakertown Red / Navajo White / Dark Brown

Cottage

12' Long Cottage starts with a 4' long Dormer.
Dormer size increases 2' in length per 4' of building length.

Includes Dormer, 1-set of 6' double doors, 1 36" entry door, 2- windows, 1- 6' transom window, overhangs



OPTIONS

- ON THIS 10x20
- Shutters | Gable Accents | Gable Pediments
 - Transom Windows | Keystone Accents
 - Patrician Bronze | Custom Color | Chestnut Brown

Painted DuraTemp		
SIZES	PRICE	RENT TO OWN (36 MOS.)
10x12	\$6,045.00	\$300.15
10x16	\$6,695.00	\$332.42
10x20	\$7,345.00	\$364.70
12x12	\$6,545.00	\$324.98
12x16	\$7,245.00	\$359.74
12x20	\$7,995.00	\$396.98
12x24	\$8,895.00	\$441.67
12x28	\$9,845.00	\$488.83
12x32	\$10,845.00	\$538.48



OPTIONS

ON THIS 14x16

- Shutters | Flower boxes
- Vents | Overhangs
- Black / Barn White / G.P. Gray / Black

Side Porch Cabin

Includes 1-36" entry door, 2 windows



OPTIONS

ON THIS 14x16

- Shutters | Transom Windows
- Keystone Accents | Railing | Overhangs
- Clay / Quakertown Red / Chestnut Brown

	Metal		Painted DuraTemp	
	PRICE	RENT TO OWN (36 MOS.)	PRICE	RENT TO OWN (36 MOS.)
SIZES				
10x12	\$5,195.00	\$257.95	\$5,395.00	\$267.88
10x16	\$5,845.00	\$290.22	\$6,045.00	\$300.15
10x20	\$6,495.00	\$322.49	\$6,695.00	\$332.42
12x12	\$5,745.00	\$285.25	\$5,945.00	\$295.18
12x16	\$6,545.00	\$324.98	\$6,745.00	\$334.91
12x20	\$7,395.00	\$367.18	\$7,595.00	\$377.11
12x24	\$8,195.00	\$406.91	\$8,395.00	\$416.84
12x28	\$9,045.00	\$449.11	\$9,245.00	\$459.04
12x32	\$9,895.00	\$491.31	\$10,095.00	\$501.24
14x16	\$7,745.00	\$384.56	\$7,945.00	\$394.49
14x20	\$8,595.00	\$426.77	\$8,795.00	\$436.70
14x24	\$9,745.00	\$483.87	\$9,945.00	\$493.80
14x28	\$10,995.00	\$545.93	\$11,195.00	\$555.87
14x32	\$12,195.00	\$605.51	\$12,395.00	\$615.44
14x36	\$13,395.00	\$665.10	\$13,595.00	\$675.03
14x40	\$14,545.00	\$722.20	\$14,745.00	\$732.13
14x44	\$15,645.00	\$776.82	\$15,845.00	\$786.74



OPTIONS

ON THIS 10x20

- Shutters | Transom Windows
- Gable Accents | Keystone Accents
- 6x5 Ramp | Overhangs
- Black / Quakertown Red / Clay / Chestnut Brown

Garden Shed

Includes 1-Set of Double Doors and 2-windows

Standard placement of windows are as top picture shows.
8'x10' Building only features one window.



OPTIONS

ON THIS 12x28

- Shutters | Flowerboxes | Gable Accents
- Gable Pediments | Cupola
- 6x5 Ramp | Overhangs
- Black / Barn White / Black

	Metal		Painted DuraTemp	
	PRICE	RENT TO OWN (36 MOS.)	PRICE	RENT TO OWN (36 MOS.)
SIZES				
8 x 10	\$3,045.00	\$140.97	\$3,145.00	\$145.60
8 x 12	\$3,295.00	\$152.55	\$3,495.00	\$161.81
10 x 12	\$3,845.00	\$178.01	\$4,045.00	\$187.27
10 x 16	\$4,495.00	\$208.10	\$4,695.00	\$217.36
10 x 20	\$5,095.00	\$235.88	\$5,295.00	\$245.14
12 x 12	\$4,345.00	\$201.16	\$4,545.00	\$210.42
12 x 16	\$5,045.00	\$233.56	\$5,245.00	\$242.82
12 x 20	\$5,795.00	\$268.29	\$5,995.00	\$277.55
12 x 24	\$6,695.00	\$309.95	\$6,895.00	\$319.21
12 x 28	\$7,645.00	\$353.94	\$7,845.00	\$363.19
12 x 32	\$8,645.00	\$400.23	\$8,845.00	\$409.49
14 x 16	\$5,595.00	\$259.03	\$5,795.00	\$268.29
14 x 20	\$6,795.00	\$314.58	\$6,995.00	\$323.84
14 x 24	\$7,995.00	\$370.14	\$8,195.00	\$379.40
14 x 28	\$9,195.00	\$425.69	\$9,395.00	\$434.95
14 x 32	\$10,395.00	\$481.25	\$10,595.00	\$490.51
14 x 36	\$11,545.00	\$534.49	\$11,745.00	\$543.75
14 x 40	\$12,645.00	\$585.42	\$12,845.00	\$594.68
14 x 44	\$13,695.00	\$634.03	\$13,895.00	\$643.29



OPTIONS

ON THIS 12x24

- Shutters | Transom Windows
- Keystone Accents | Overhangs | White Soffit
- Black / Ronks Gray / Barn White

Lofted Garden Shed

"I really love my shed"

P Elliot - Wellston Ohio

Includes 1-Set of Double Doors,
2-windows and 2-lofts.

(Picture includes extra options)

"We LOVE our shed! It is exactly what we wanted! Quality is top notch, the delivery person was very good. Top notch company from start to finish! So glad we chose them over the others we researched."

B. Maupin



OPTIONS

ON THIS 10x20

- 6x5 Ramp
- Patrician Bronze / Jamestown Red / Navajo White

SIZES	Metal		Painted DuraTemp	
	PRICE	RENT TO OWN (36 MOS.)	PRICE	RENT TO OWN (36 MOS.)
10 x 12	\$4,195.00	\$194.21	\$4,295.00	\$198.84
10 x 16	\$4,995.00	\$231.25	\$5,195.00	\$240.51
10 x 20	\$5,745.00	\$265.97	\$5,945.00	\$275.23
12 x 12	\$4,695.00	\$217.36	\$4,895.00	\$226.62
12 x 16	\$5,695.00	\$263.66	\$5,895.00	\$272.92
12 x 20	\$6,695.00	\$309.95	\$6,895.00	\$319.21
12 x 24	\$7,695.00	\$356.25	\$7,895.00	\$365.51
12 x 28	\$8,695.00	\$402.55	\$8,895.00	\$411.81
12 x 32	\$9,645.00	\$446.53	\$9,845.00	\$455.79
14 x 16	\$6,595.00	\$305.32	\$6,795.00	\$314.58
14 x 20	\$7,845.00	\$363.19	\$8,045.00	\$372.45
14 x 24	\$9,095.00	\$421.06	\$9,295.00	\$430.32
14 x 28	\$10,345.00	\$478.94	\$10,545.00	\$488.19
14 x 32	\$11,595.00	\$536.81	\$11,795.00	\$546.06
14 x 36	\$12,845.00	\$594.68	\$13,045.00	\$603.94
14 x 40	\$14,045.00	\$650.23	\$14,245.00	\$659.49
14 x 44	\$15,195.00	\$703.47	\$15,395.00	\$712.73



OPTIONS

ON THIS 14x44

- Windows | Brown Garage door
- 9x5 Ramp | Overhangs
- Tudor Brown / Jamestown Red / Dark Brown

Lofted Garage

FREE
Delivery
+ Setup!

Includes 1-9'x7' Insulated Garage Door
(8'x7' on 10' wide barns), 1-Single door
and Heavy Duty floor.
(Picture includes extra options)



OPTIONS

ON THIS 12x20

- Shutters | Windows
- Brown Garage Door | Overhangs
- Patrician Bronze / Pequea Tan / Gold

SIZES	Metal		Painted DuraTemp	
	PRICE	RENT TO OWN (36 MOS.)	PRICE	RENT TO OWN (36 MOS.)
10 x 16	\$5,745.00	\$265.97	\$5,945.00	\$275.23
10 x 20	\$6,545.00	\$303.01	\$6,745.00	\$312.27
12 x 20	\$7,595.00	\$351.62	\$7,795.00	\$360.88
12 x 24	\$8,595.00	\$397.92	\$8,795.00	\$407.18
12 x 28	\$9,545.00	\$441.90	\$9,745.00	\$451.16
12 x 32	\$10,445.00	\$483.56	\$10,645.00	\$492.82
14 x 20	\$8,845.00	\$409.49	\$9,045.00	\$418.75
14 x 24	\$10,095.00	\$467.36	\$10,295.00	\$476.62
14 x 28	\$11,345.00	\$525.23	\$11,545.00	\$534.49
14 x 32	\$12,595.00	\$583.10	\$12,795.00	\$592.36
14 x 36	\$13,845.00	\$640.97	\$14,045.00	\$650.23
14 x 40	\$15,045.00	\$696.53	\$15,245.00	\$705.79
14 x 44	\$16,195.00	\$749.77	\$16,395.00	\$759.03



OPTIONS
ON THIS 12x24

- 9x5 ramp
- Black / Autumn Red / Black

Garage

Larger Barns
Available in
All Models!

**Built
On Site**
Now Available!

Includes 1-9'x7' Insulated Garage Door,
1-Single door (as shown) and Heavy Duty floor.



OPTIONS
ON THIS 14x20

- Hartford Green / Clay / Hartford Green



Extruded Aluminum Tread plate below Garage Door

SIZES	Metal		Painted DuraTemp	
	PRICE	RENT TO OWN (36 MOS.)	PRICE	RENT TO OWN (36 MOS.)
10 x 16	\$5,445.00	\$252.08	\$5,645.00	\$261.34
10 x 20	\$6,245.00	\$289.12	\$6,445.00	\$298.38
12 x 16	\$6,295.00	\$291.44	\$6,495.00	\$300.69
12 x 20	\$6,995.00	\$323.84	\$7,195.00	\$333.10
12 x 24	\$7,995.00	\$370.14	\$8,195.00	\$379.40
12 x 28	\$8,845.00	\$409.49	\$9,045.00	\$418.75
12 x 32	\$9,695.00	\$448.84	\$9,895.00	\$458.10
14 x 20	\$8,245.00	\$381.71	\$8,445.00	\$390.97
14 x 24	\$9,395.00	\$434.95	\$9,595.00	\$444.21
14 x 28	\$10,645.00	\$492.82	\$10,845.00	\$502.08
14 x 32	\$11,795.00	\$546.06	\$11,995.00	\$555.32
14 x 36	\$12,995.00	\$601.62	\$13,195.00	\$610.88
14 x 40	\$14,145.00	\$654.86	\$14,345.00	\$664.12
14 x 44	\$15,245.00	\$705.79	\$15,445.00	\$715.05



OPTIONS

ON THIS 14x20

- Shutters | Windows | Transom Windows
- Gable Pediment | Overhangs
- Charcoal / Barnwood Gray / Black

Lofted Barn

*"We love our barn, the quality is amazing."
The Hardens*

Includes 1-Set of double Doors
and 1-loft



OPTIONS

ON THIS 10x20

- 6x5 ramp
- Ash Gray / Dark Gray / Barn White

SIZES	Metal		Painted DuraTemp	
	PRICE	RENT TO OWN (36 MOS.)	PRICE	RENT TO OWN (36 MOS.)
10 x 12	\$3,995.00	\$184.95	\$4,195.00	\$194.21
10 x 16	\$4,795.00	\$221.99	\$4,995.00	\$231.25
10 x 20	\$5,595.00	\$259.03	\$5,795.00	\$268.29
12 x 12	\$4,495.00	\$208.10	\$4,695.00	\$217.36
12 x 16	\$5,495.00	\$254.40	\$5,695.00	\$263.66
12 x 20	\$6,495.00	\$300.69	\$6,695.00	\$309.95
12 x 24	\$7,495.00	\$346.99	\$7,695.00	\$356.25
12 x 28	\$8,495.00	\$393.29	\$8,695.00	\$402.55
12 x 32	\$9,445.00	\$437.27	\$9,645.00	\$446.53
14 x 16	\$6,395.00	\$296.06	\$6,595.00	\$305.32
14 x 20	\$7,645.00	\$353.94	\$7,845.00	\$363.19
14 x 24	\$8,895.00	\$411.81	\$9,095.00	\$421.06
14 x 28	\$10,145.00	\$469.68	\$10,345.00	\$478.94
14 x 32	\$11,395.00	\$527.55	\$11,595.00	\$536.81
14 x 36	\$12,645.00	\$585.42	\$12,845.00	\$594.68
14 x 40	\$13,845.00	\$640.97	\$14,045.00	\$650.23
14 x 44	\$14,995.00	\$694.21	\$15,195.00	\$703.47



OPTIONS

ON THIS 12x12

- Transom Windows | Extra 3' door
- 7" Wide Double Doors | 1' Taller Sidewalls
- Gable Accents | Gable Pediments | Overhangs
- Patrician Bronze / Quakertown Red / Chestnut Brown

Utility

40 YEAR
Painted Metal
Warranty on all
Structures!

Includes 1-Set of Double Doors



OPTIONS

ON THIS 10x16

- Autumn Red / Surry Beige / Autumn Red

SIZES	Metal		Painted DuraTemp	
	PRICE	RENT TO OWN (36 MOS.)	PRICE	RENT TO OWN (36 MOS.)
8 x 10	\$2,845.00	\$131.71	\$2,945.00	\$136.34
8 x 12	\$3,095.00	\$143.29	\$3,295.00	\$152.55
10 x 12	\$3,645.00	\$168.75	\$3,845.00	\$178.01
10 x 16	\$4,295.00	\$198.84	\$4,495.00	\$208.10
10 x 20	\$4,895.00	\$226.62	\$5,095.00	\$235.88
12 x 12	\$4,145.00	\$191.90	\$4,345.00	\$201.16
12 x 16	\$4,845.00	\$224.31	\$5,045.00	\$233.56
12 x 20	\$5,595.00	\$259.03	\$5,795.00	\$268.29
12 x 24	\$6,495.00	\$300.69	\$6,695.00	\$309.95
12 x 28	\$7,445.00	\$344.68	\$7,645.00	\$353.94
12 x 32	\$8,445.00	\$390.97	\$8,645.00	\$400.23
14 x 16	\$5,395.00	\$249.77	\$5,595.00	\$259.03
14 x 20	\$6,595.00	\$305.32	\$6,795.00	\$314.58
14 x 24	\$7,795.00	\$360.88	\$7,995.00	\$370.14
14 x 28	\$8,995.00	\$416.44	\$9,195.00	\$425.69
14 x 32	\$10,195.00	\$471.99	\$10,395.00	\$481.25
14 x 36	\$11,345.00	\$525.23	\$11,545.00	\$534.49
14 x 40	\$12,445.00	\$576.16	\$12,645.00	\$585.42
14 x 44	\$13,495.00	\$624.77	\$13,695.00	\$634.03



OPTIONS

ON THIS 10x12

- 5x5 Ramp
- Black / Pequea Green / G.P. Gray

Mini Barn

Includes 4' Loft

This model features a sidewall height of only 48".

Includes 1-Set of Double Doors (single 4' door or Double 2'6" Wide Doors on 8' wide barn) and 1-4' loft.



OPTIONS

ON THIS 8x12

- Transom Windows | 5' Double Doors | Keystone accents
- Patrician Bronze / G.P. Gray / Clay / Wild Grasses

SIZES	Metal		Painted DuraTemp	
	PRICE	RENT TO OWN (36 MOS.)	PRICE	RENT TO OWN (36 MOS.)
8 x 8	\$2,695.00	\$124.77	\$2,795.00	\$129.40
8 x 10	\$2,895.00	\$134.03	\$2,995.00	\$138.66
8 x 12	\$3,045.00	\$140.97	\$3,145.00	\$145.60
10 x 12	\$3,395.00	\$157.18	\$3,595.00	\$171.06
10 x 16	\$3,995.00	\$184.95	\$4,195.00	\$194.21
10 x 20	\$4,545.00	\$210.42	\$4,745.00	\$219.68
12 x 16	\$4,595.00	\$212.73	\$4,795.00	\$221.99
12 x 20	\$5,245.00	\$242.82	\$5,445.00	\$252.08
12 x 24	\$5,845.00	\$270.60	\$5,995.00	\$277.55

Credit Cards Accepted!



*Prices subject to change without notice



OPTIONS

ON THIS 12x24

- Windows | 6' Transom Window | Railing
- Black / Barn White / Black

Cabin & Lofted Cabin

Includes 1- 9 lite Steel entry door,
2-windows and 6' porch(included in size)

**Cabin Styles are not available for Built On-Site.*



OPTIONS

ON THIS 14x24

- Shutters | Window | Railings
- Clay / Jamestown Red / G.P. Gray

SIZES	Metal		Painted DuraTemp		Metal		Painted DuraTemp	
	PRICE	RTO	PRICE	RTO	PRICE	RTO	PRICE	RTO
CABIN					LOFTED CABIN			
10x12	\$4,695.00	\$233.12	\$4,895.00	\$243.05	\$4,895.00	\$243.05	\$5,095.00	\$252.98
10 x 16	\$5,145.00	\$238.19	\$5,345.00	\$247.45	\$5,645.00	\$261.34	\$5,845.00	\$270.60
10 x 20	\$5,795.00	\$268.29	\$5,995.00	\$277.55	\$6,395.00	\$296.06	\$6,595.00	\$305.32
12 x 12	\$5,395.00	\$267.88	\$5,595.00	\$277.81	\$5,945.00	\$295.18	\$6,145.00	\$305.12
12 x 12	\$5,845.00	\$290.22	\$6,045.00	\$300.15	\$6,645.00	\$329.94	\$6,845.00	\$339.88
12 x 20	\$6,645.00	\$307.64	\$6,845.00	\$316.90	\$7,395.00	\$342.36	\$7,595.00	\$351.62
12 x 24	\$7,495.00	\$346.99	\$7,695.00	\$356.25	\$8,245.00	\$381.71	\$8,445.00	\$390.97
12 x 28	\$8,345.00	\$386.34	\$8,545.00	\$395.60	\$9,095.00	\$421.06	\$9,295.00	\$430.32
12 x 32	\$9,195.00	\$456.55	\$9,395.00	\$466.48	\$9,945.00	\$493.80	\$10,145.00	\$503.73
14 x 16	\$7,095.00	\$352.28	\$7,295.00	\$362.22	\$7,645.00	\$379.60	\$7,845.00	\$389.52
14 x 20	\$7,895.00	\$365.51	\$8,095.00	\$374.77	\$8,795.00	\$407.18	\$8,995.00	\$416.44
14 x 24	\$9,095.00	\$421.06	\$9,295.00	\$430.32	\$9,995.00	\$462.73	\$10,195.00	\$471.99
14 x 28	\$10,295.00	\$476.62	\$10,495.00	\$485.88	\$11,195.00	\$518.29	\$11,395.00	\$527.55
14 x 32	\$11,495.00	\$532.18	\$11,695.00	\$541.44	\$12,395.00	\$573.84	\$12,595.00	\$583.10
14 x 36	\$12,695.00	\$587.73	\$12,895.00	\$596.99	\$13,595.00	\$629.40	\$13,795.00	\$638.66
14 x 40	\$13,845.00	\$640.97	\$14,045.00	\$650.23	\$14,745.00	\$682.64	\$14,945.00	\$691.90
14 x 44	\$14,945.00	\$691.90	\$15,145.00	\$701.16	\$15,845.00	\$733.56	\$16,045.00	\$742.82

Dog Kennel



OPTIONS
ON THIS 10x16
• Black / Dark Gray / Black



OPTIONS
ON THIS 8x14
• Black / Barn White / Black

8'x14' Kennel | \$3,845

Includes 1-window, 1- 3' single door, epoxy floor, a 6' indoor area and an 8' outside run with 2 doggie doors.

10'x16' Kennel | \$4,696

Includes 2- windows, 1- 3' single door, epoxy floor, a 6' inside area and a 10' outside run with 2 doggie doors.

Chicken Coop



ON THIS 8x12
• Custom Color / Pequea Green / Navajo White



ON THIS 3x3
• Tudor Brown / Ronks Gray / Barn White



ON THIS 5x8
• Black / Ronks Gray / Barn White



Options

\$125 | Exhaust Fan
\$230 | Electric Chicken Door
\$65 | 14"x21" Window

8'x12' Coop | \$4,585

Includes 2- 14"x21" windows, 2- 2' doors, 1- 5' Vent, epoxy floor, 6' Interior, 12' exterior run, 5 Laying boxes.

5'x8' Coop | \$2,985

Includes 2- 14"x21" windows, 1- 2' doors, 1- 6' Vent, epoxy floor, 8' Interior, no external run, 9 Laying boxes.

3'x3' Coop | \$995 Available for Pickup Only

Includes 1- 2' Door, 1- 6" Vent, epoxy floor, and 4 Laying boxes.

Greenhouse



OPTIONS

ON THIS 10x16

- Hartford Green / Hartford Green / Tudor Brown



OPTIONS

ON THIS 10x16

- Autumn Red / Autumn Red / Regal White

10'x16' Greenhouse | \$4,245

Includes 4 Windows, 6' Double Door and
2- 10x2 Workbenches and 1- 12"x12"
thermostat controlled exhaust fan

Options

\$125 | Exhaust Fan

Woodshed



OPTIONS

ON THIS 6x12

- Clay / Treated Wood

6'x12' | \$2,885



OPTIONS
ON THIS 10x20
• Black / Autumn Red

Lofted Run-in with Tack Room

Dura-temp and Metal Siding
Standard Options Include 1- 8' opening,
1- tack room, 1- 3' entry door and 1 window.

	Metal		Painted DuraTemp	
	PRICE	RENT TO OWN (36 MOS.)	PRICE	RENT TO OWN (36 MOS.)
SIZES				
10x16	\$4,595.00	\$228.15	\$4,795.00	\$238.08
10x20	\$5,345.00	\$265.39	\$5,545.00	\$275.32
12x12	\$4,295.00	\$426.52	\$4,495.00	\$223.19
12x16	\$5,245.00	\$260.42	\$5,445.00	\$270.36
12x20	\$6,195.00	\$307.60	\$6,395.00	\$317.52
12x24	\$7,125.00	\$353.77	\$7,325.00	\$363.71
12x28	\$8,195.00	\$406.91	\$8,395.00	\$416.84
12x32	\$9,145.00	\$454.08	\$9,345.00	\$464.01
14x16	\$6,095.00	\$302.64	\$6,295.00	\$312.57
14x20	\$7,245.00	\$359.74	\$7,445.00	\$369.67
14x24	\$8,495.00	\$421.80	\$8,695.00	\$431.73
14x28	\$9,745.00	\$483.87	\$9,945.00	\$493.80
14x32	\$10,895.00	\$540.97	\$11,095.00	\$550.90
14x36	\$12,045.00	\$598.07	\$12,245.00	\$608.00
14x40	\$13,195.00	\$655.17	\$13,395.00	\$665.10
14x44	\$14,245.00	\$717.23	\$14,445.00	\$717.23



A-Frame Run-in with Tack Room

Dura-temp and Metal Siding
Standard Options include 1-8' Opening,
1- Tack room, 1-3' entry door and 1 window

	Metal		Painted DuraTemp	
	PRICE	RENT TO OWN (36 MOS.)	PRICE	RENT TO OWN (36 MOS.)
SIZES				
10x16	\$4,295.00	\$213.26	\$4,495.00	\$223.19
10x20	\$4,845.00	\$240.57	\$5,045.00	\$250.49
12x12	\$4,195.00	\$208.29	\$4,395.00	\$218.22
12x16	\$4,795.00	\$238.08	\$4,995.00	\$248.02
12x20	\$5,545.00	\$275.32	\$5,745.00	\$285.25
12x24	\$6,395.00	\$317.52	\$6,595.00	\$327.46
12x28	\$7,295.00	\$362.22	\$7,495.00	\$372.15
12x32	\$8,245.00	\$409.38	\$8,445.00	\$419.32
14x16	\$5,345.00	\$265.39	\$5,545.00	\$275.32
14x20	\$6,495.00	\$322.49	\$6,695.00	\$332.42
14x24	\$7,595.00	\$377.11	\$7,795.00	\$387.04
14x28	\$8,745.00	\$434.21	\$8,945.00	\$444.14
14x32	\$9,845.00	\$488.83	\$10,045.00	\$498.77
14x36	\$10,965.00	\$544.44	\$11,165.00	\$554.38
14x40	\$12,095.00	\$600.55	\$12,295.00	\$610.48
14x44	\$13,045.00	\$647.73	\$13,245.00	\$657.65



OPTIONS

ON THIS 10x16

- Patrician Bronze / Terratone / Patrician Bronze

Lean-To Run-in with No Tack Room

Available with metal siding only
Standard options include 1-8' opening.

	Metal	
	PRICE	RENT TO OWN (36 MOS.)
SIZES		
10x16	\$4,045.00	\$200.85
10x20	\$4,695.00	\$233.12
12x12	\$3,945.00	\$195.88
12x16	\$4,645.00	\$230.64
12x20	\$5,395.00	\$267.88
12x24	\$6,195.00	\$307.60
12x28	\$7,095.00	\$352.28
12x32	\$8,045.00	\$399.45
14x16	\$5,145.00	\$255.46
14x20	\$6,295.00	\$312.57
14x24	\$7,445.00	\$369.67
14x28	\$8,595.00	\$426.77
14x32	\$9,695.00	\$481.38
14x36	\$10,795.00	\$536.00
14x40	\$11,845.00	\$588.14
14x44	\$12,845.00	\$637.79

Custom Designs - Playhouse



OPTIONS

ON THIS 8x12

- Flowerboxes | Cupola | Railing
- Black / Barn White / Black

8'x12' Playhouse | \$3,695

Includes 2- windows, 3' entry door and 1 split 3' single door.

Options

\$65 | 14"x21" Window



OPTIONS

ON THIS 10x12

- Octagonal Window | Railing | Metal Roof
- Black / Bora Bora Shore /Barn White

10'x12' Playhouse with Dormer | \$4,795

Includes 2 Windows, 1 split 3' single door and shingle roof.

Options

\$65 | 14"x21" Window

Upcharge for Metal Roof on this Model

Custom Designs - Hunting Blind



OPTIONS

ON THIS 8x8

- Realtree Edge Camo Metal



OPTIONS

ON THIS 6x6

- Realtree Edge Camo Metal

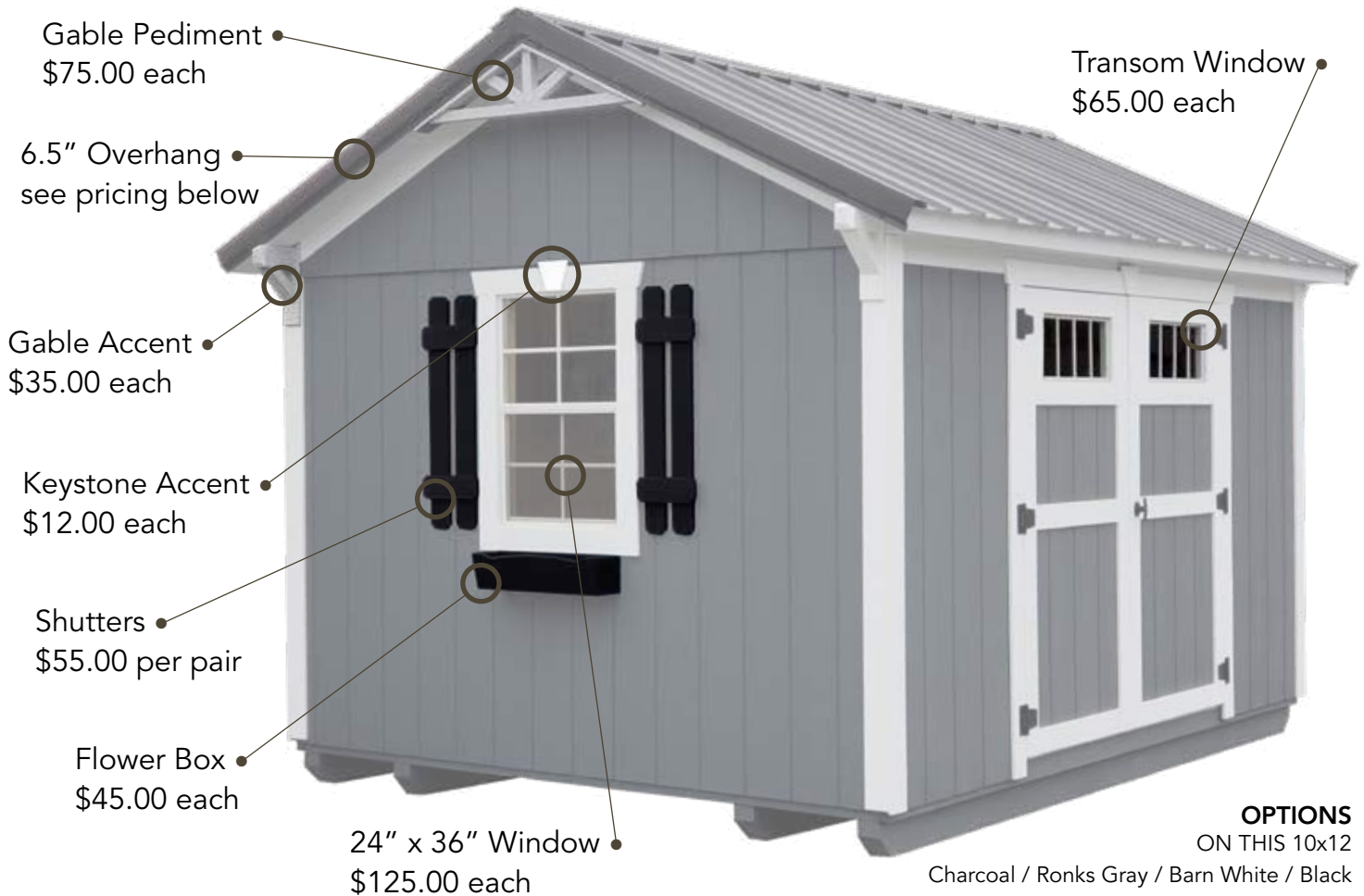
6'x6' Hunting Blind | \$3,845

Includes 4 windows and a 3' single door, rubber flooring and insulated sidewalls.

8'x8' Hunting Blind | \$4,295

Includes 4 windows and a 3' single door, rubber flooring and insulated sidewalls.

Extra Options



"WOW!! We just had our Garden Shed built on site this morning. What an excellent job. I highly recommend this company."

V. Bailey



OPTIONS

ON THIS 12x20

- Windows | Transom Windows | Overhangs
- Hartford Green / Regal White / Regal White / Black

6.5" Overhang Pricing

SIZES	(A-Frame Building) Gable & Sides	(Lofted Buildings) Gable Ends Only
8x10	\$320.00	\$275.00
8x12	\$350.00	\$275.00
10x12	\$380.00	\$350.00
10x16	\$435.00	\$350.00
10x20	\$490.00	\$350.00
12x12	\$400.00	\$425.00
12x16	\$450.00	\$425.00
12x20	\$490.00	\$425.00
12x24	\$530.00	\$425.00
12x28	\$570.00	\$425.00
12x32	\$600.00	\$425.00
14x16	\$500.00	\$485.00
14x20	\$550.00	\$485.00
14x24	\$590.00	\$485.00
14x28	\$630.00	\$485.00
14x32	\$670.00	\$485.00
14x36	\$720.00	\$485.00
14x40	\$770.00	\$485.00
14x44	\$820.00	\$485.00

Doors & Windows

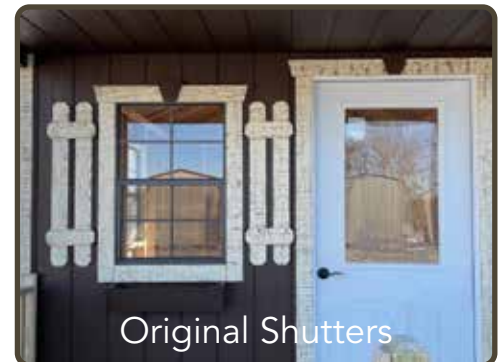
24" x 36" Insulated Window	\$195.00
Vents	\$15.00
Extra Set Double Doors 5' wide	\$325.00
Extra Set Double Doors 6' wide	\$390.00
Extra Wide Doors 7' wide	\$75.00
Extra Single Door 3' wide	\$195.00
Extra Single Door 4' wide	\$220.00
36" 9-lite Steel Entry Door	\$350.00
Extra Insulated Garage Door 9'W x 7'H .	\$1,050.00
Extra Insulated Garage Door 8'W x 7'H .	\$900.00
Garage Door Lock.	\$65.00
Decorative Garage Door Hardware.	\$75.00
18" x 18" Cupola	\$250.00
Ridge Capping Vents. (ask dealer for pricing)	
<i>*Fixed Vents are not available for metal buildings</i>	
Spray Foam Insulation.	\$3.20 per Square Foot

Workbench

8'x2'	\$115.00
10'x2'	\$135.00
12'x2'	\$165.00
14'x2'	\$195.00

Ramps, Shutters....

3' x 5' Ramp	\$170.00
4' x 5' Ramp	\$190.00
5' x 5' Ramp	\$210.00
6' x 5' Ramp	\$230.00
7' x 5' Ramp	\$250.00
8' x 5' Ramp	\$270.00
9' x 5' Ramp	\$290.00
Dutch Shutters (per set)	\$65.00
Z Shutters (per set)	\$75.00
Drop Rods (pr.)	\$35.00



Due to liability reasons, no ladders are included in the purchase of any shed.

On-Site Construction

Can't get a building into your yard? Buy it Built On-site. Our Professional builders will build your barn in your designated area with the same superior Quality and Service that our customers have come to expect from us.

Starting at
\$770!



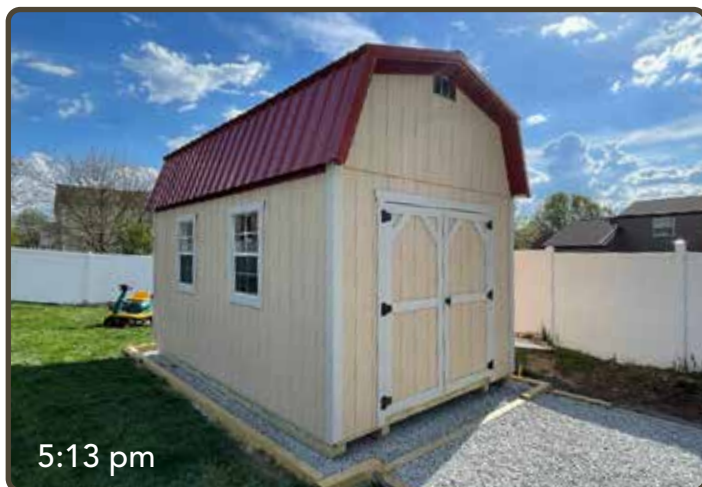
- **All *Built On-Site* barns are primed but not painted.**
- **It is recommended that all Build on Site buildings be painted within 4 weeks of build date to retain the Manufacturer and Siding Warranty. Ask Sales Rep for more info.**
- **1 foot higher sidewalls for *Lofted* barns and *Garages* need to be *Built On-Site*.**



Built On-Site (up to 220 sq. ft.). . . . \$770.00
Additional \$3.50 per sq. ft. over 220 sq. ft.

Built On-Site Options

1' Higher Sidewalls (per perimeter foot) . . \$4.75
Heavy Duty T & G Floor (per square foot). \$1.50



Carry Charge (per foot over 100') . . . \$1.00

**Side Porch Cabins & Cottage Styles are not available for Build-on-Site.*

All On-Site Builds are not available for Rent To Own

Lofted Garden Shed

- Double Door 69" wide 68½" high
- 2-24" x 36" Windows
- 2- 4' Lofts (8' lofts on 28' barns or larger)
- 76½" Sidewalls (73½" on 14' wide)

Garden Shed

- Double Door 69" wide 68½" high
- 2-24" x 36" Windows
- 76½" Sidewalls
- 5½" /12 Roof Pitch

Lofted Barn

- Double Door 69" wide 68½" high
- 8' Loft
- 76½" Sidewalls (73½" on 14' wide)

Lofted Garage

- 9' x 7' Insulated Garage Door w/slidelock
- (8' x 7' Garage Door on 10' Wide Garages)
- 36" Single Door
- 76½" Sidewalls (73½" on 14' wide)
- 8' Loft
- 3½" /12 Roof Pitch
- Heavy Duty Floor

Garage

- 9' x 7' Insulated Garage Door w/slidelock
- (8' x 7' Garage Door on 10' Wide Garages)
- 36" Single Door
- Sidewalls (94" - Metal) (88½" - Wood)
- /12 Roof Pitch (3½" - Metal) (5½" - Wood)
- Heavy Duty Floor

"I purchased a 10'x16' garden shed. Well built, fast delivery and looks great. We couldn't be more satisfied! Thanks so much."

Todd - Cincinnati, Ohio

Mini Barn

- Double Door 69" wide 70½" high
- Double 2'6" Doors on 8' Wide Barn (or Single 48" Wide Door if desired)
- 4' Loft
- 4' Sidewalls

Utility

- Double Door 69" wide 68½" high
- 76½" Sidewalls
- 5½" Roof Pitch

Cabin

- 36" 9-lite Steel Entry Door
- 2-24" x 36" Windows
- 6' Porch
- 84" Sidewalls
- 5½" / Roof Pitch

Overall Barn Heights

Lofted Buildings

10' wide- 11' 4"

12' wide- 11' 7"

14' wide- 11' 9"

Garage

12' wide- 11' 5"

14' wide- 12'

Mini Barn

8' wide- 8' 8"

10' wide- 8' 11"

12' wide- 9' 2"

Utility/Garden Shed

8' wide- 9' 2"

10' wide- 9' 8"

12' wide- 10' 3"

14' wide- 10' 9"

Color Options

DuraTemp Paint Colors:



10 Year no fade warranty and 25 year adhesion warranty.



Wilderness Urethane Colors



Metal Colors:

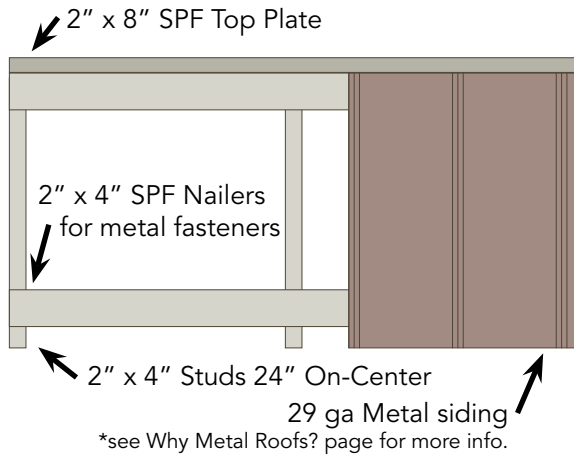


- Due to the affect of light, age and the printing process, these samples may vary slightly in color or sheen from the actual materials.



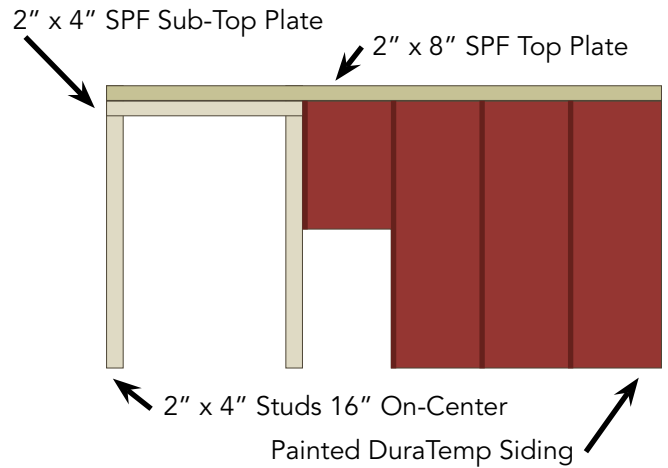
Metal Siding

Metal sided barns are framed with 2" x 4" studs 24" o/c with 2" x 4" metal fastener nailers approximately every 32" horizontally on the outside of the studs. 2" x 8" top plate on all metal barns except garage style.



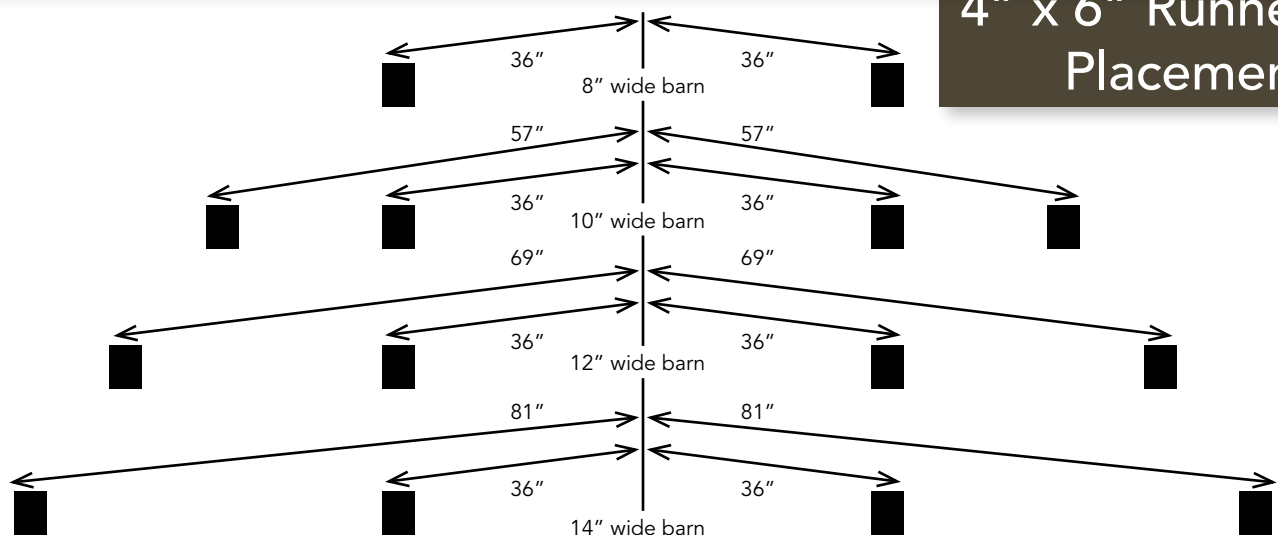
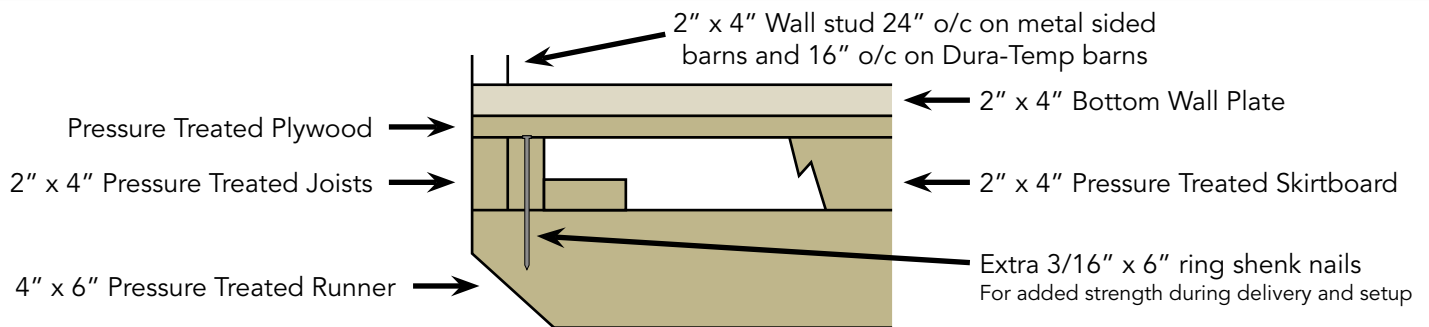
DuraTemp Siding

2" x 4" studs 16" o/c with DuraTemp siding, a real plywood based product. 2" x 8" plus 2" x 4" Double top plate.



*SPF (Spruce/Pine/Fir) lumber is graded for strength and visual appeal

Floor Specs.



Quality That Lasts a Lifetime

Compare these quality features and see why Cricket Valley Structures is your choice for *Superior Quality* that lasts a lifetime!



3"x4" Truss plate

High Quality Standard Features:

- 4"x6" Runners: Pressure Treated & stronger than any other runners.
- 3"x4" Commercial grade truss plates: No plywood gussets!
- Aluminum Garage Door Tread Plate: Cricket Valley Exclusive!
- We only use 3/4" Treated Plywood Flooring: Lifetime warranty, real plywood!
- 2"x8" Top Plate: Compare this to a single 2"x4" top plate.

More Standard Features Include:

- 2" x 4" Treated Joists
- EPA Approved Treated Products.
- High Quality Aluminum Tread plate on all standard doors.
- Insulated Vapor Barrier on all Metal Roofs.
- Wayne Dalton® Insulated Garage Doors.



Extruded Aluminum Garage Door Tread plate



2"x8" Top Plate

**Huge
Strength
Difference!**



4"x6" runners versus 4"x4"



- Fresh-looking, more natural appearance than other copper-based treated products. i.e. ACQ, CCA.
- Can be placed in direct contact with aluminum.
- Carries a lifetime warranty against rot, decay and termite infestation.
- Clean, odorless, non-staining and non-irritating to humans, animals and plants

The only new exterior wood preservation system that is EPA approved!



Framed floor

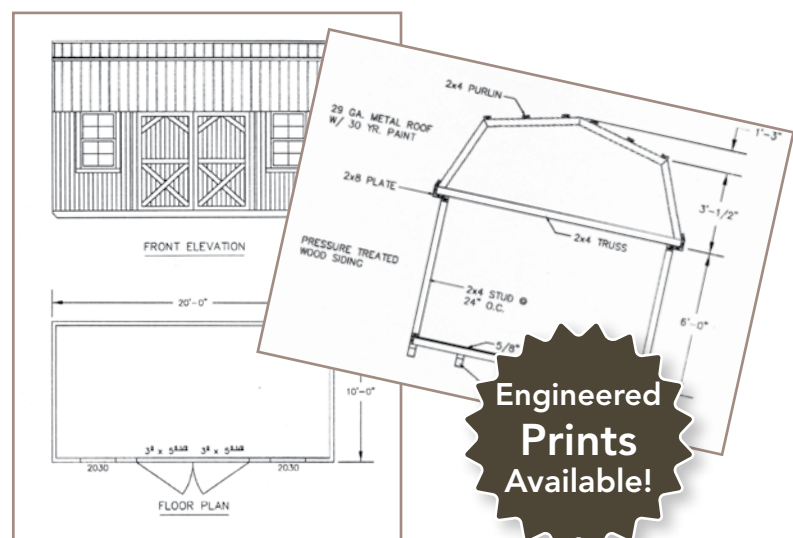


4"x6" Runners



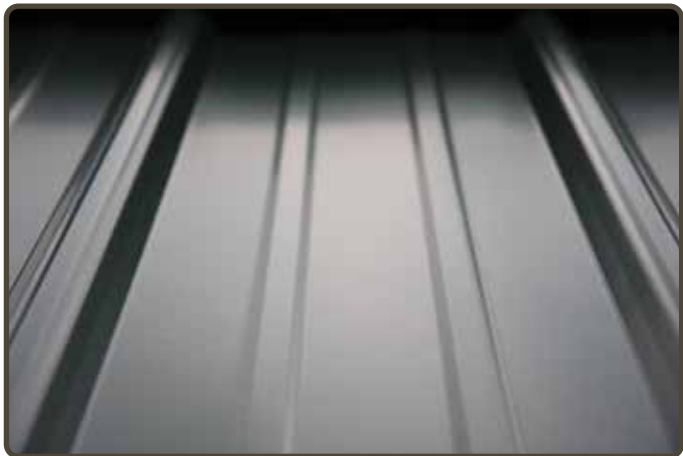
Permits and Drawings

- Customer is responsible for all permits, zoning and HOA requirements.
- Drawings provided upon request
- Engineered prints can be purchased (ask for pricing).



Ask dealer about pricing

Why Metal Roofs?



- 40 Year Warranty
- Maintenance Free!
- Paint Free!
- Leak Free!
- Rust Inhibitor Edge Coat

Our roof system has been proven to withstand winds in excess of 70 mph with no damage!



*Our Metal is warm-formed to prevent cracking and chipping of paint!

Product Information

Standard in all our roofs!

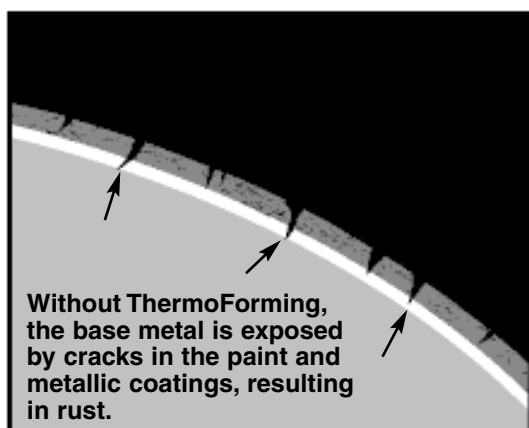


- Reduces building condensation.
- Forms an effective wind and vapor barrier.
- Reduces heat loss in winter and heat gain in summer.
- Not affected by moisture and humidity.
- Bird, rodent and insect resistant.

To increase corrosion protection for greater longevity, visual appeal and value, McElroy Metal now ThermoForms all Max-Rib® galvanized and galvalume metal panels with siliconized polyester coatings.

Why?

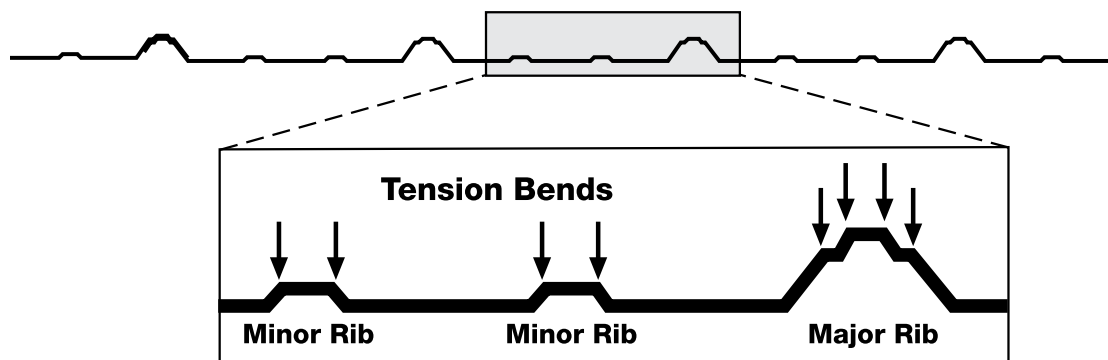
ThermoForming of metal panels reduces the risk of premature corrosion of roof and sidewall panels by significantly reducing tension-bend cracking of the paint and metallic coatings.



What is TENSION - BEND CRACKING?

At colder forming temperatures, the substrate and siliconized polyester paint coatings become brittle, and the forced bending by the rollers may crack both layers as shown. This exposure point is unprotected from oxidation (rusting) of the base metal substrate. Because Kynar 500® coatings are more flexible, tension-bend cracking is not an issue with Max-Rib® Ultra.

Where do TENSION-BEND CRACKS occur?



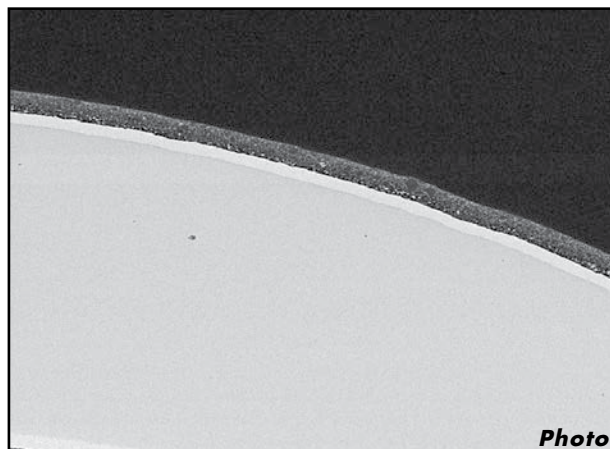
The THERMOFORM Process . . .

Prior to entering the roll-former, the coil sheet enters a heater that raises inner and outer temperatures to >120F. This process increases the ductility of the paint coating as well as the ductility of the galvanized or galvalume metallic coating.

ThermoForming prolongs visual appeal of Sil-Poly coated galvanized G60 substrate:

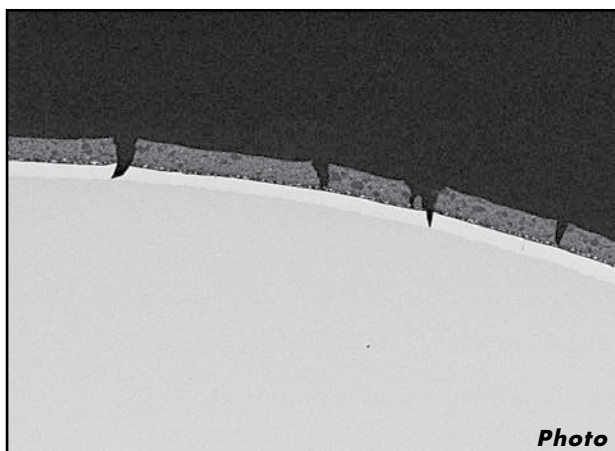


Cold forming of panel with G60 galvanized substrate and siliconized-polyester topcoating produces tension-bend cracks in the siliconized-polyester paint and galvanized coatings. (150x mag.)

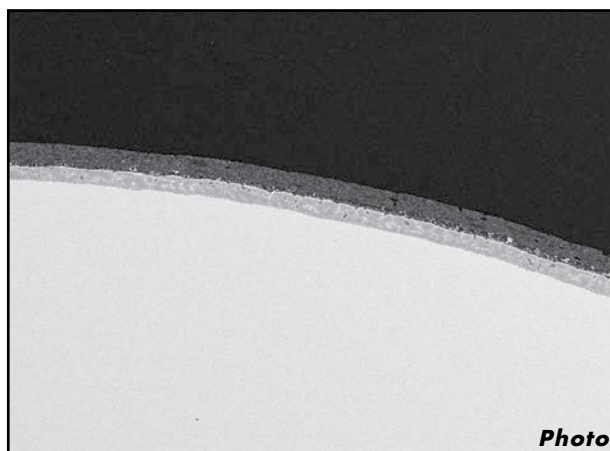


With ThermoForming, note there are no cracks in the siliconized-polyester paint and galvanized coatings. This panel was ThermoFormed at 124F. (150x mag.)

ThermoForming adds life, looks and value to Sil-Poly coated galvanized G90 substrate:



Not cracking as much as the other coatings, the siliconized-polyester coated G90 substrate still reflects tension-bend cracks in both galvanized and paint layers. This panel was cold-rolled at 72F. (150x mag.)



ThermoForming eliminates tension-bend cracking in G90 galvanized strata as well as in the siliconized-polyester paint coating. This panel was ThermoFormed at 133F. (150x mag.)

Max-Rib Commodity	Max-Rib 100	Max-Rib II	Max-Rib Ultra
ThermoFormed	ThermoFormed	ThermoFormed	NOT REQUIRED*

*Kynar 500® coatings are so flexible that tension-bend cracking does not occur. ThermoForming not required.

All data taken from a Project by the Research and Technology Center of United States Steel Corporation in Monroeville, PA. and is used with their permission.

Tired of driving across town to get to your storage?

Now you can have a storage unit in your own backyard,
and after making just 36 monthly rental payments the building is yours.



Why rent a storage unit when you can have your own Rent-To-Own?

Rent-To-Own

Rent a building in the size, color and style you choose, delivered to your own backyard, and own that building after renting for only 36 months.

All that is required to enroll in our rent-to-own program is an initial payment of one month rent, a security deposit equal to one rental payment (including sales tax and damage waiver fee if applicable) and the ability to make 35 monthly payments thereafter. Since this is not a loan, no credit check is required. You simply rent on a month by month basis for 36 months.

You may cancel the rental contract at any time simply by calling us and requesting that we pick up the building at no further cost to you. You may also purchase the building at any point by simply paying 60% of the remaining balance on your 36 month lease.

If you choose our Rent-to-Own plan, you do not acquire any ownership rights unless you pay the full amount required for ownership or exercise an early purchase option.

Rent-To-Own is made available by:

Country Classic Rentals, LLC
PO Box 2
Russellville, Ohio 45168

*All On-Site Builds are not
available for Rent To Own*

Delivery and Setup

**FREE
Delivery
+ Setup!**

Within 40 Miles
of Dealer



- Reduces yard damage.
- Enables delivery in moist areas.
- Easily maneuvers thru tight spots.



Site Preparation Recommendation

WE RECOMMEND -

Level Ground - Base should be 12" larger than building on all four sides. Remove 3 - 4" of sod and fill back in with No. 57 limestone or gravel, making sure that the entire area of stone is level. Or, put 4-5" of gravel on top of sod, then make sure it is level and compacted.

Sloped Ground - Remove 4-5" of sod on high end and build up low end using 4"x4"s fastened together on top of each other creating a box frame, fill frame with No. 57 limestone. Level and compact stone. If barn is NOT built On-Site, pad must be accessible for equipment to move shed into place.

Please only use only limestone gravel! No smaller than crusher run and no bigger than #5.



We level and block to a maximum height of 12". There is a charge of \$10 per block used over 12".

Customer is Responsible for All Anchoring, Zoning, and Permits.

Your Professional Dealer

We appreciate that you chose to look at our quality-built buildings.

CHOICES

We all have many choices to make in our journey through life. From birth till death we travel between the eternities. May the choices we make help us to find calmness in our soul, peace in our heart, a meaningful future, and a safe eternity...*For God so loved the world, that he gave his only begotten Son, that whosoever believeth in him should not perish, but have everlasting life.* JOHN 3:16

Your Mennonite Friends