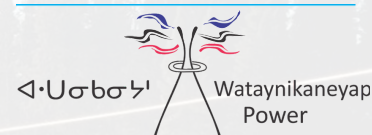


# WATAYNIKANEYAP POWER PROJECT

## Environmental Three-Month Look Ahead



### Project Update

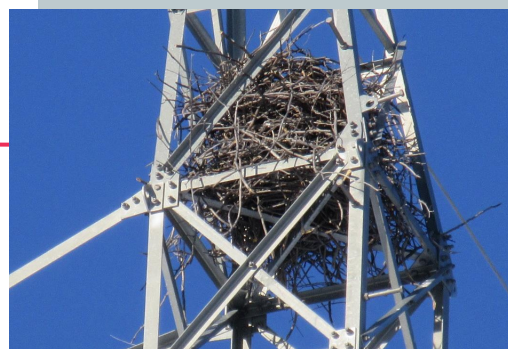
The Wataynikaneyap Power Project continues to progress well as we head into summer 2023. Almost all of the Project Right of Way (RoW) in Groups 1, 2 and 3 has been cleared in preparation for the line. Clearing the RoW is a necessary first step in the construction of a transmission line. Valard Construction is continuing to install foundations, assemble and install structures, and string lines throughout the Project area.

This significant progress on the Project has only been possible through the support of our 24 First Nation owners, who share the vision of building and owning a transmission line to bring reliable power to their communities. Meegwetch to the land stewards and First Nation communities for their continued support of the Wataynikaneyap Power Project.

Please note, once construction in each area is complete, access to the line will still be required periodically for restoration, monitoring and maintenance activities.

### Environmental Project Activities

- Laying matting for access
- Environmental monitoring, surveys of vegetation regrowth and wildlife protection measures
- Access trail maintenance
- Spill response and reporting
- Site assessments for necessary sediment and erosion control (including maintaining and repairing controls as needed)
- Clean-up and restoration



Crow nests can be spotted high in the towers this time of year. This one was in a structure along segment CJ. Once the wires are strung, most nests located on the poles are fine to be left and pose little risk to the bird or the line. However, depending on the species and location, some nests may need further mitigation, and relocation or removal may ultimately be required.

Mapping on Page 4 and associated Alignment Sheets provide further information on the Project areas currently under construction.

An extra worker is helping with the line inspections. This bird goes by many names such as the Canada Jay, Grey Jay or Whisky Jack, and can be found throughout our Project area.



### Project Overview

The Wataynikaneyap Power Transmission Project is an unprecedented First Nations-led project to build ~1,800 km of transmission lines in Northwestern Ontario to connect 17 remote First Nations to the provincial transmission grid. As announced on August 16, 2022, Wataynikaneyap Power completed and energized a 230 kV line, ~300 km from Dinorwic to Pickle Lake, Ontario in 2022 (Phase 1). Three First Nations have been connected as of May 2023.

For more information on the Wataynikaneyap Power Project construction schedule, please visit: [www.valard-watay.com/project-schedule/](http://www.valard-watay.com/project-schedule/)

## Project Restoration

Temporary work areas not required for long term maintenance of transmission facilities are now being decommissioned and restored by Valard. The goal of restoration is to return disturbed areas to pre-existing conditions, where practical.

General restoration measures include:

- Scheduling cleanup to minimize interactions with wildlife and fish;
- Cleaning up and removing all construction materials;
- Removing matting from the Project site; and
- Re-contouring/stabilizing/seeding banks where required.

## Alignment Sheets

Environmental Construction and Constraints Schedules (Alignment Sheets) are available online for identified community members, such as Chiefs and Community Liaisons. Alignment Sheets provide an overview of planned construction activities in Phase 2 over a three month period. Alignment Sheets identify environmental features, protection and monitoring plans, and any wildlife species, habitat, timing or work constraints that may apply. Schedules are subject to change.



## Wildlife Protection & the Endangered Species Act (ESA)

Wataynikaneyap Power works with First Nations and qualified contractors to conduct environmental monitoring of areas within the Project footprint, especially within endangered species habitat.

Following construction, sensitive environmental features (like den sites, hibernacula, caribou nursery and winter use areas, maternity roosting habitats) that are confirmed to intersect with the Project will continue to be monitored to ensure effective protective measures are in place.

All observations of species listed as endangered or threatened are reported by Valard within 30 days to the surrounding First Nations and MECP using the Species Encounter Reporting Form.

**For further details on Environmental Management and the ESA, please visit:**  
[www.wataypower.ca/engagement/environmental-assessment](http://www.wataypower.ca/engagement/environmental-assessment)

### Bats

#### LITTLE BROWN AND NORTHERN MYOTIS

**Committee for the Status of Species at Risk in Ontario Status:** Endangered

#### Current Restricted Time Periods:

Hibernation: September 1 – May 31  
 Maternity Roost: May 15 - August 31

**General Habitat:** Bats are nocturnal. During the day they roost (sleep) in trees and buildings. Hibernation tends to occur in caves or trees.

**Protection Commitment:** Implementing the Noise Management Plan limits the amount of vegetation clearing noise in proximity to bat hibernacula. If a new area of hibernation is encountered, Project activities will cease within 200 m and the MECP will be contacted by Valard within 24 hours for further direction.



### Woodland Caribou

#### BOREAL POPULATION

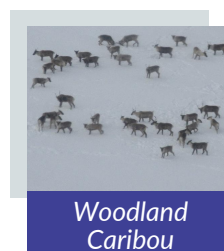
**Committee for the Status of Species at Risk in Ontario Status:** Threatened

#### Current Restricted Time Period:

Nursery: May 1 - September 15

**General Habitat:** Caribou require large, undisturbed areas of mature forest. They select specific habitat that supports successful reproduction, provides summer and/or winter forage, and/or facilitates movement between discrete areas of use.

**Protection Commitment:** The extent to which the Project overlaps with caribou habitat has been minimized to limit impacts to caribou. Selective vegetation clearing and winding roads will help reduce line-of-sight for predators. Wildlife plot surveys are conducted as part of the ESA Permit.



**Contact Wataynikaneyap Power at:**

[www.wataypower.ca](http://www.wataypower.ca)

(807) 577-5955 ext. 117

[watayinquiries@wataypower.ca](mailto:watayinquiries@wataypower.ca)

# PERMITTING UPDATE

## MAY – JULY 2023

The table below provides a high-level summary of permits required for the Wataynikaneyap Power Project. Permits are typically granted with conditions of approval, which must be completed in order for the Project to remain in compliance and maintain valid approval. Engagement and consultation with the communities is required for any work on homelands.

PERMIT NAME	DESCRIPTION	Obtained By:	STATUS
<b>Leave to Construct (LTC) Approval</b>	Required for the construction, expansion or reinforcement of transmission lines or interconnections.	Wataynikaneyap Power	<b>Approved:</b> April 1, 2019
<b>Environmental Assessment (EA)</b>	The entire Project requires an Environmental Assessment (EA) identifying the activities, associated effects and mitigation/enhancement measures.	Wataynikaneyap Power	<b>Approved:</b> (Phase 1) June 21, 2019 (Phase 2) July 8, 2019
<b>Environmental Compliance Approval (ECA)</b>	Authorizes noise emissions for Wataynikaneyap Transformer Stations. An ECA is required for Project substations (air and noise) and camps (waste).	Wataynikaneyap Power (transformer stations) Valard Construction (camps)	Northwest Health Unit and/or MECP ECA and Environmental Activity and Sector Registry (EASR) submission required for septic fields and generator at remote camps as required
<b>Species at Risk Act (SARA)</b>	Required if Project activities are expected to impact a species listed as Extirpated, Endangered or Threatened under Schedule 1 of SARA. This is a federal approval.	Wataynikaneyap Power	<b>Approved:</b> October 10, 2019
<b>Endangered Species Act (ESA)</b>	An ESA permit authorizes the Project to perform an activity that isn't otherwise allowed under the ESA, as long as permit requirements are met. This is a provincial approval.	Wataynikaneyap Power	<b>Approved:</b> October 11, 2019
<b>Water Crossings</b>	Project activities with the potential to harm fish or fish habitat are submitted for review. Applications often include a description of water crossing structures and available fisheries information (habitat, species).	Valard Construction (temporary crossings) Wataynikaneyap Power (permanent bridges)	Water Crossing Code of Practice updates underway as construction progresses
<b>Work Permit (WP) or Land Use Permit (LUP)</b>	Authorizations for work during construction on Crown lands <sup>1</sup> and/or shore lands including construction/upgrade of access roads and trails, culvert/bridges, timber cutting, temporary construction camps and transmission lines.	Valard Construction (temporary sites) Wataynikaneyap Power (permanent sites)	NDMNRF WP and LUPs permits underway for temporary workspace, access roads and temporary bridge applications that may be required by construction and remediation.
<b>WP or LUP (Provincial Parks &amp; Conservation Reserves)</b>	Required where the Project crosses provincial parks and conservation reserves. The work permits authorize clearing, construction, etc.	Wataynikaneyap Power	<b>Approved:</b> March 11, 2020
<b>Crown Easement</b>	Required for continual use of Crown Land for the purpose of transmission line operation.	Wataynikaneyap Power	Post-construction surveys will be required to roll land use permits into a Crown easement.
<b>Aggregate Resources Act Permit</b>	Required to extract aggregate on Crown Land. The Project will require aggregate resources for the construction of substations, roads, water crossing and temporary use areas.	Valard Construction	These permits are only required in certain locations, and are not required at this time.
<b>Archaeological and/or Heritage Clearance</b>	Clearance required for archaeological potential and heritage resources (built heritage and cultural heritage landscapes).	Valard Construction (routing changes) Wataynikaneyap Power (original routing)	Confirmed areas with project activities have been cleared and working to flag additional finds.
<b>Permit To Take Water (PTTW)</b>	A PTTW may be required if water taking (surface or ground water) is in excess of 50,000 L/day from a given source. This water may be needed for camp systems, to construct ice roads or used as a dust suppression.	Valard Construction	Not required at this time.
<b>Explosives Permit</b>	Required for use, storage and transport of explosives.	Valard Construction	Valard will acquire a third party contractor with applicable permits and approvals.
<b>Geotechnical Exploration</b>	Required for geotechnical sampling for tower and substation foundations	Valard Construction Wataynikaneyap Power	<b>Approved:</b> Nov 2019 and Jan 2020.
<b>Fire Permits</b>	Required if timber from the cleared right of way is to be burned.	Valard Construction	Burning on hold until winter.
<b>Encroachment, Entrance &amp; Signage Permits</b>	Required for any installation or work upon, under or within the limits of a provincial highway right-of-way.	Wataynikaneyap Power	Encroachment permits and amendments have been approved by MTO.

<sup>1</sup> The term "Crown Lands" refers to lands over which the Province of Ontario asserts authority. Nothing in this document should be taken as indicating that First Nations agree with Ontario's assertions, or have acknowledged or agreed that they or any of their members are governed by or subject to such authority



