

WATAYNIKANEYAP POWER PROJECT

Phase 1 Group 1: Dinorwic to Pickle Lake, Line Section AB



Project Update

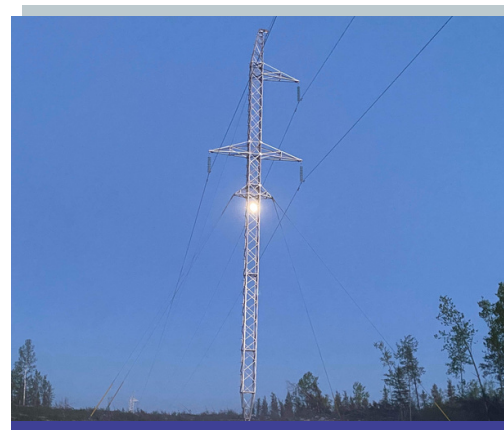
The new Wataynikaneyap Power Transmission Line between the Dinorwic and Pickle Lake substations is planned for energization in the coming months, marking the completion of Phase 1 of the Wataynikaneyap Power Line Project!

The Project will improve power quality and increase reliability in communities in northern Ontario, improve public safety, and support future growth and development in the North with renewable electricity.

Please note, once construction in each area is complete, access to the line will still be required periodically for restoration, monitoring and maintenance activities.

Environmental Project Activities

- Access trail maintenance
- Spill response and reporting
- Site assessments for necessary sediment and erosion control (including maintaining and repairing controls as needed)
- Clean-up and restoration
- Environmental monitoring of vegetation regrowth and wildlife protection measures



The moon can be seen shining through one of the many towers along the Wataynikaneyap Transmission Line. This photo was taken in North Caribou Lake First Nation by Ojay Kwe Doris.

Mapping on Page 4 and associated Alignment Sheets provide further information on the full Project and areas currently under construction.

Within sensitive wildlife areas on the Project, signage is posted to warn drivers that species may be in the area. Areas are also flagged and monitored as required.



Project Overview

Phase 1 of the Wataynikaneyap Power Project is a ~300 km, 230 kilovolt (kV) transmission line joining the connection facility in the Dinorwic area to a transformer station in the Township of Pickle Lake.

Wataynikaneyap Power was established in 2015 to expand grid connection for remote First Nations. This is Phase 1 of 2 of the Project.

The Wataynikaneyap Power Project is an unprecedented project led by 24 First Nations. It involves the construction and operation of ~1,800 km of transmission lines in Northwestern Ontario, connecting 17 remote First Nations to the provincial power grid for the first time.

For more information on the Wataynikaneyap Power Project construction schedule, please visit: www.valard-watay.com/project-schedule/

Alignment Sheets

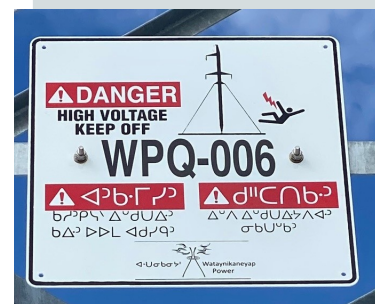
Environmental Construction and Constraints Schedules (Alignment Sheets) are available online for identified community members. Alignment Sheets provide an overview of planned construction activities over a three month period. Alignment Sheets identify environmental features, protection and monitoring plans and any wildlife species, habitat, timing or work constraints that may apply. The Project schedule is subject to change.

Wildlife Protection & the Endangered Species Act (ESA)

Wataynikaneyap Power works with Indigenous communities and qualified contractors to conduct environmental monitoring of areas within the Project footprint, especially within endangered species habitat.

Following construction, sensitive environmental features (like den sites, hibernacula, caribou nursery and winter use areas, maternity roosting habitats) that intersect with the Project will continue to be monitored to ensure effective protective measures are in place.

All observations of species listed as endangered or threatened are reported by Valard within 30 days to the surrounding Indigenous communities and MECP using the Species Encounter Reporting Form.



An example of the signage that will be on towers on the Wataynikaneyap Power Transmission Line. Signage is in English and Anishiniimowin and also provides a visual warning that climbing the tower is dangerous and could result in electric shock.

Each sign also labels the individual tower. This one is "WPQ-006". If there is a concern, the exact tower can be identified by its unique label.

For further details on Environmental Management and the ESA, please visit:
www.wataypower.ca/engagement/environmental-assessment

Bats

LITTLE BROWN AND NORTHERN MYOTIS

Committee for the Status of Species at Risk in Ontario (COSSARO) Status: Endangered

Current Restricted Time Periods:

Hibernation: September 1 – May 31
Maternity Roost: May 15 - August 31

General Habitat:

Bats are nocturnal. During the day they roost (sleep) in trees and buildings. Hibernation tends to occur in caves or abandoned mines, or in hollow deciduous trees.

Protection Commitment: There will be no Project activities within bat maternity habitat during the maternity period, with the exception of authorized areas indicated in the ESA permit. If a new area of hibernation is encountered, Project activities will cease within 200 m and the MECP will be contacted by Valard within 24 hours for further direction.



Woodland Caribou

BOREAL POPULATION

COSSARO Status: Threatened

Current Restricted Time Period:

Nursery: May 1 - September 15

General Habitat: Caribou require large, undisturbed areas of mature conifer upland forest and lowlands. Caribou select specific habitat that supports successful reproduction and calf rearing, provides summer and/or winter forage, and/or facilitates movement between discrete areas of use.

Protection Commitment: The Project has been minimized in caribou ranges to limit impacts to caribou habitat. Selective vegetation clearing and the winding roads will also help reduce line-of-sight for predators. Project activities are avoided and sensory disturbances minimized within 10 km of the nursery habitat during the calving season. Wildlife plot surveys are conducted monthly from June to September as part of the ESA Permit.



Restoration

Following construction, temporary work areas and access roads not required for long term maintenance of transmission facilities will be decommissioned and restored. The goal of restoration is to return disturbed areas to pre-existing conditions, where practical.

General restoration measures will include:

- Schedule cleanup to minimize interactions with wildlife and fish;
- All construction materials will be removed and cleaned up;
- Matting will be removed from the Project site;
- Banks will be re-contoured/stabilized/seeded where required;
- Unauthorized access will be minimized for areas scheduled for future regeneration activities.

Contact Wataynikaneyap Power at:

www.wataypower.ca

(807) 577-5955 ext. 117

watayinquiries@wataypower.ca

PERMITTING UPDATE

AUGUST - OCTOBER 2022

The table below provides a high-level summary of permits required for the Wataynikaneyap Power Project. Permits are typically granted with conditions of approval, which must be completed in order for the Project to remain in compliance and maintain valid approval. Engagement and consultation with the communities is required for any work on homelands.

PERMIT NAME	DESCRIPTION	Obtained By:	STATUS
Leave to Construct (LTC) Approval	Required for the construction, expansion or reinforcement of transmission lines or interconnections.	Wataynikaneyap Power	Approved: April 1, 2019
Environmental Assessment (EA)	The entire Project requires an Environmental Assessment (EA) identifying the activities, associated effects and mitigation/enhancement measures.	Wataynikaneyap Power	Approved: (Phase 1) June 21, 2019 (Phase 2) July 8, 2019
Environmental Compliance Approval (ECA)	Authorizes noise emissions for Wataynikaneyap Transformer Stations. An ECA is required for Project substations (air and noise) and camps (waste).	Wataynikaneyap Power (transformer stations) Valard Construction (camps)	Northwest Health Unit and/or MECP ECA and EASR submission required for septic fields and generator at remote camps
Species at Risk Act (SARA)	Required if Project activities are expected to impact a species listed as Extirpated, Endangered or Threatened under Schedule 1 of SARA. This is a federal approval.	Wataynikaneyap Power	Approved: October 10, 2019
Endangered Species Act (ESA)	An ESA permit authorizes the Project to perform an activity that isn't otherwise allowed under the ESA, as long as permit requirements are met. This is a provincial approval.	Wataynikaneyap Power	Approved: October 11, 2019
Water Crossings	Project activities with the potential to harm fish or fish habitat are submitted for review. Applications often include a description of water crossing structures and available fisheries information (habitat, species).	Valard Construction (temporary crossings) Wataynikaneyap Power (permanent bridges)	Water Crossing Code of Practice updates underway as construction progresses
Work Permit (WP) or Land Use Permit (LUP)	Authorizations for work during construction on Crown lands ¹ and/or shore lands including construction/upgrade of access roads and trails, culvert/bridges, timber cutting, temporary construction camps and transmission lines.	Valard Construction (temporary sites) Wataynikaneyap Power (permanent sites)	NDMNRF WP and LUPs permits for temporary workspace, access roads, and temporary bridge applications as required by construction and remediation.
WP or LUP (Provincial Parks & Conservation Reserves)	Required where the Project crosses provincial parks and conservation reserves. The work permits authorize clearing, construction, etc.	Wataynikaneyap Power	Approved: March 11, 2020
Crown Easement	Required for continual use of Crown Land for the purpose of transmission line operation.	Wataynikaneyap Power	Post-construction surveys will be required to roll land use permits into a Crown easement.
Aggregate Resources Act Permit	Required to extract aggregate on Crown Land. The Project will require aggregate resources for the construction of substations, roads, water crossing and temporary use areas.	Valard Construction	These permits are only required in certain locations, and are not required at this time.
Archaeological and/or Heritage Clearance	Clearance required for archaeological potential and heritage resources (built heritage and cultural heritage landscapes).	Valard Construction (routing changes) Wataynikaneyap Power (original routing)	Environment confirmed areas with project activities have been cleared and are working with survey to flag additional finds.
Permit To Take Water (PTTW)	A PTTW may be required if water taking (surface or ground water) is in excess of 50,000 L/day from a given source. This water may be needed for camp systems, to construct ice roads or used as a dust suppression.	Valard Construction	Not required at this time.
Explosives Permit	Required for use, storage and transport of explosives.	Valard Construction	Valard will acquire a third party contractor with applicable permits and approvals.
Geotechnical Exploration	Required for geotechnical sampling for tower and substation foundations	Valard Construction Wataynikaneyap Power	Approved: Nov 2019 and Jan 2020. Test pitting and drilling is underway.
Fire Permits	Required if timber from the cleared right of way is to be burned.	Valard Construction	Burn permit renewal.
Encroachment, Entrance & Signage Permits	Required for any installation or work upon, under or within the limits of a provincial highway right-of-way.	Wataynikaneyap Power	Encroachment permits and amendments have been approved by MTO.

¹ The term "Crown Lands" refers to lands over which the Province of Ontario asserts authority. Nothing in this document should be taken as indicating that First Nations agree with Ontario's assertions, or have acknowledged or agreed that they or any of their members are governed by or subject to such authority

