

# Wataynikaneyap Power Environmental Update

The Environmental Assessment (EA) approvals for Phase 1 and Phase 2 of the Wataynikaneyap Power Project were received in Summer 2019. Since this time, the Project has been following-up with additional technical studies and submitting environmental permits to the appropriate authorities for approval. Most of these permits, including those from the Department of Fisheries and Oceans (DFO), the Ministry of Natural Resources and Forestry (MNRF) and the Ministry of the Environment, Conservation and Parks (MECP) are in place. The Environmental Team is actively working with identified Aboriginal communities and stakeholders to address Conditions of Approvals (CoA) for these authorizations.

A summary of Project activities will be provided to identified Aboriginal communities and government agencies 15-days in advance of any proposed work. This overview will be updated and available on the project website every three months throughout the course of the Project construction. The update will include an outline of Project construction activities that are planned to occur during the following three months, including a list of potential environmental features, considerations and permit applications expected to be submitted. Wataynikaneyap PM and Opiikapawin Services LP (OSLP) are working together with Aboriginal Communities and qualified contractors to complete several environmental monitoring programs as outlined in the EA. Along with Contractor's compliance monitoring activities, Wataynikaneyap Power will also conduct audits of Project activities to ensure ongoing compliance with EA and engagement commitments and various other requirements. Results of monitoring activities will be made available through an Annual Compliance Report (ACR) posted to the [Wataynikaneyap Environmental Webpage](#).



Pickle Lake, Ontario

## **PHASE 1 TRANSMISSION LINE TO PICKLE LAKE**

Changes approved (September 12, 2019) to reduce Project impacts:

1. Line shift to align with existing forestry access and to reduce the impact on caribou habitat.
2. Dinorwic Substation shift (670 m) to a flatter, more accessible location.
3. Project-wide effort to reduce the amount of new access roads by maximizing travel along the corridor. This will result in installing more permanent water crossings (gravel, culverts or clear-span bridges) along the corridor.
4. A Project-wide effort to reduce the size and number of planned camp/laydown locations

## **PHASE 2 CONNECTION TO REMOTE FIRST NATIONS (ESR)**

Commitments were made (July 10, 2019) to revise three sections of the 115 kV transmission line outside of the defined 440m limits of work through comments received on the final ESR. Namely:

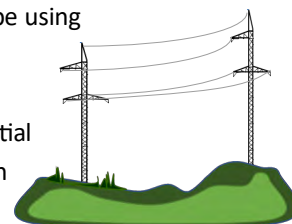
1. Between Muskrat Dam First Nation and Sachigo Lake First Nation;
2. Within part of Whitefeather Forest northeast of Poplar Hill First Nation; and
3. Near the Newmont Goldcorp Red Lake Mine north of Red Lake, Ontario.

An Addendum under the Class EA for Minor Transmission Facilities was completed to the Final ESR, detailing changes in environmental impacts. No comments nor requests were received on the addendum, and following the end of the comment period (July 25, 2019), the Phase 2 ESR addendum process was deemed complete.

Please visit the [Wataynikaneyap Webpage](#) to review details of the routing changes.

## **LATTICE STEEL STRUCTURES**

Wataynikaneyap will be using steel lattice pole structures for the line. This will reduce potential effects on wildlife such as:



- \* Poles have a wide span, requiring less overall structures.
- \* Structures are assembled near communities and then flown to site. Installation is fast and reduces noise disturbance to wildlife during construction.
- \* These poles are less vulnerable to wildfire damage and no risk to insects or bird damage. Lasts longer and requires less maintenance.



In Partnership with

**FORTIS** INC.



# Wildlife Species At Risk

AS PART OF THE WATAYNIKANEYAP POWER EA, four key wildlife species are identified as Species At Risk (SAR) within the Project area. When a plant or animal is classified as such, the species and their habitat will automatically receive legal protection. Below is a summary of the wildlife species and the mitigation measures that Wataynikaneyap Power staff and all contractors will follow under the direction of the Environmental Monitoring team. For a complete list of species and further information on mitigation measures, visit: <https://www.wataypower.ca/engagement/environmental-management>

## LITTLE BROWN MYOTIS AND NORTHERN MYOTIS

**Species At Risk Act (SARA) Status:** Endangered

**Restricted Timing Periods:**

- \* Maternity Roosting Season: May 15 — August 31
- \* Hibernation Period: September 1 — May 30

**General Habitat:** Bats are nocturnal, during the day they roost in trees and buildings. Hibernation tends to occur in caves or abandoned mines, or in hollow deciduous trees.

**Mitigation Commitment:** Implementation of the Noise Management Plan will limit the amount of vegetation clearing noise. If a new area of hibernation is encountered, Project activities will cease within 200 m and the MECP will be contacted within 24 hours for further direction.

## LITTLE BROWN MYOTIS



## NORTHERN MYOTIS



## WOLVERINE

**SARA Status:** Threatened/Special Concern

**Restricted Timing Periods:**

- Permission required to construct within 500 m of a den, year-round

**General Habitat:** Wolverines usually live alone and roam across large territories. Females build dens under snow-covered boulders, fallen logs, and occasionally in snow drifts.

**Mitigation Commitment:** Environmental Monitors will be retained to monitor the development footprint during construction to identify sensitive features (e.g. wolverine dens) in advance of clearing. If a den site is encountered, activity will cease within 4 km of Den Site and the MECP will be contacted within 24 hours.



## CARIBOU

**SARA Status:** Threatened

**Restricted Timing Periods:**

- \* Caribou Nursery Area: May 1 – June 15 & July 16 – September 15
- \* Caribou Wintering: December 1 – March 31
- \* Travel Corridors: April & November

**General Habitat:** Caribou require large, undisturbed areas of mature conifer upland forest and lowlands. Caribou select specific habitat that support successful reproduction and calf rearing, provide summer and/or winter forage, and/or facilitate movement between discrete areas of use.

**Mitigation Commitment:** The Project footprint has been minimized in caribou ranges to limit the damage and removal of habitat. Selective vegetation clearing and the winding roads will also help reduce line-of-sight for predators.







## PERMITTING PROCESS

Wataynikaneyap Power is required to obtain permits from various government agencies. Environmental permit applications will be posted online and an access link with log-in information will be provided to all identified Aboriginal communities and government agencies in the Phase 1 and Phase 2 EA. Members will also be notified when any new applications are added. This includes work permits and other relevant environmental authorizations. Below is a summary of the completed, in progress, and not yet started permits. Permits are typically granted with conditions of approval, which are requirements that must be followed or completed to maintain valid approval. Below is a brief overview. Click [here](#) to review a map of water crossing and work permit locations.

Permit	Description	Status
Leave to Construct	Required for the construction, expansion or reinforcement of transmission lines or interconnections.	Approved: April 1, 2019
Endangered Species Act	Required if the Project is expected to impact a species listed as Endangered or Threatened under Schedule 1 of the Species at Risk Act (SARA).	Approved: October 11, 2019
Species at Risk Act	Required if Project activities during construction and operations are expected to impact a species listed as Extirpated, Endangered or Threatened under Schedule 1 of the Species at Risk Act (see SARs above).	Approved: October 10, 2019
Environmental Assessment	The entire Project requires an Environmental Assessment (EA) identifying the activities, associated effects and mitigation / enhancement measures.	Approved: (Phase 1) June 21, 2019 (Phase 2) July 8, 2019
Water Crossings	Project activities with the potential to harm fish or fish habitat are submitted for review. This often includes water crossing schematics, and available fisheries information (habitat, species).	In progress with Requests for Review of proposed culverts to identify those that require permits
Work Permit or Land Use Permit (Provincial Parks and Conservation Reserves)	Required where the Project crosses provincial parks and conservation reserves. The work permits authorize required clearing, construction, etc.	Draft permit applications submitted March 2019 with Ontario Parks. Public posting June 18, 2019.
Work Permit or Land Use Permit	Authorizations for work during construction on public lands, Crown lands and/or shore lands including geotechnical investigations, construction/upgrade of access roads and trails, culvert/bridges, timber cutting, temporary construction camps and transmission lines.	Batches of work permit applications were submitted on a weekly basis for Phase 1 from January – August 2019. Phase 2 permits will be submitted through the fall with a total of over 800 estimated work permits required.
Crown Easement	Required for continual use of Crown Land for the purpose of transmission line operation.	Post-construction survey to roll land use permits into a Crown easement.
Environmental Compliance Approval (ECA)	Authorizes noise emissions for Wataynikaneyap Transformer Station (at Pickle Lake). An ECA (Air and Noise) is required for Project substations.	Noise Impact Assessments (NIA) are included in the EAs and were completed for Project substations.
Fisheries Act	Required for the protection of fish habitat and pollution prevention.	In progress with proposed submission November 15, 2019 with target approval December 1st, 2019.
Aggregate Resources Act Permit	Required to extract aggregate on Crown Land and on private land. The Project will require aggregate resources for the construction of substations, roads, water crossing and temporary use areas.	Wataynikaneyap has started collecting field data on a number of potential sites throughout the Project. The contractor will secure these permits required for the Project.
Archaeological and/or Heritage Clearance	Clearance may be required for heritage resources (built heritage and cultural heritage landscapes). Archaeological clearance is captured in the EA.	The Stage 1 Archaeological Assessments completed. Areas identified through the Stage 1 assessments as requiring Stage 2 will be assessed prior to ground disturbance.
Geotech Exploration and Permit To Take Water (PTTW)	Required for clearing of right-of-way, access ways, and permit to take water	In progress and submission to the Ministry expected in the following three months for Phase 1.
Burn Permits	Required to burn wood, brush, leaves and grass outside the fire season (April 1—October 31)	In progress and submission to the Ministry expected in the following three months for Phase 1.
Encroachment, Entrance & Signage Permits	Required for any installation or work upon, under or within the limits of a provincial highway right-of-way.	In progress and submission to the Ministry of Transportation (MTO) expected in the following three months for Phase 1.



### did you know?

#### The success of the Endangered Species Act is amazing!

It has saved 70 species – including the American Grey Wolf, The Grizzly Bear, and the American Alligator – it has a success rate of almost 100%. There have only been ten species that have gone extinct since the act started, eight of those ten were likely extinct before being protected.

#### Artifacts found at the Berens River crossing are displayed at the Pikangikum school.



Contact us!

Wataynikaneyap Power

(807) 577-5955

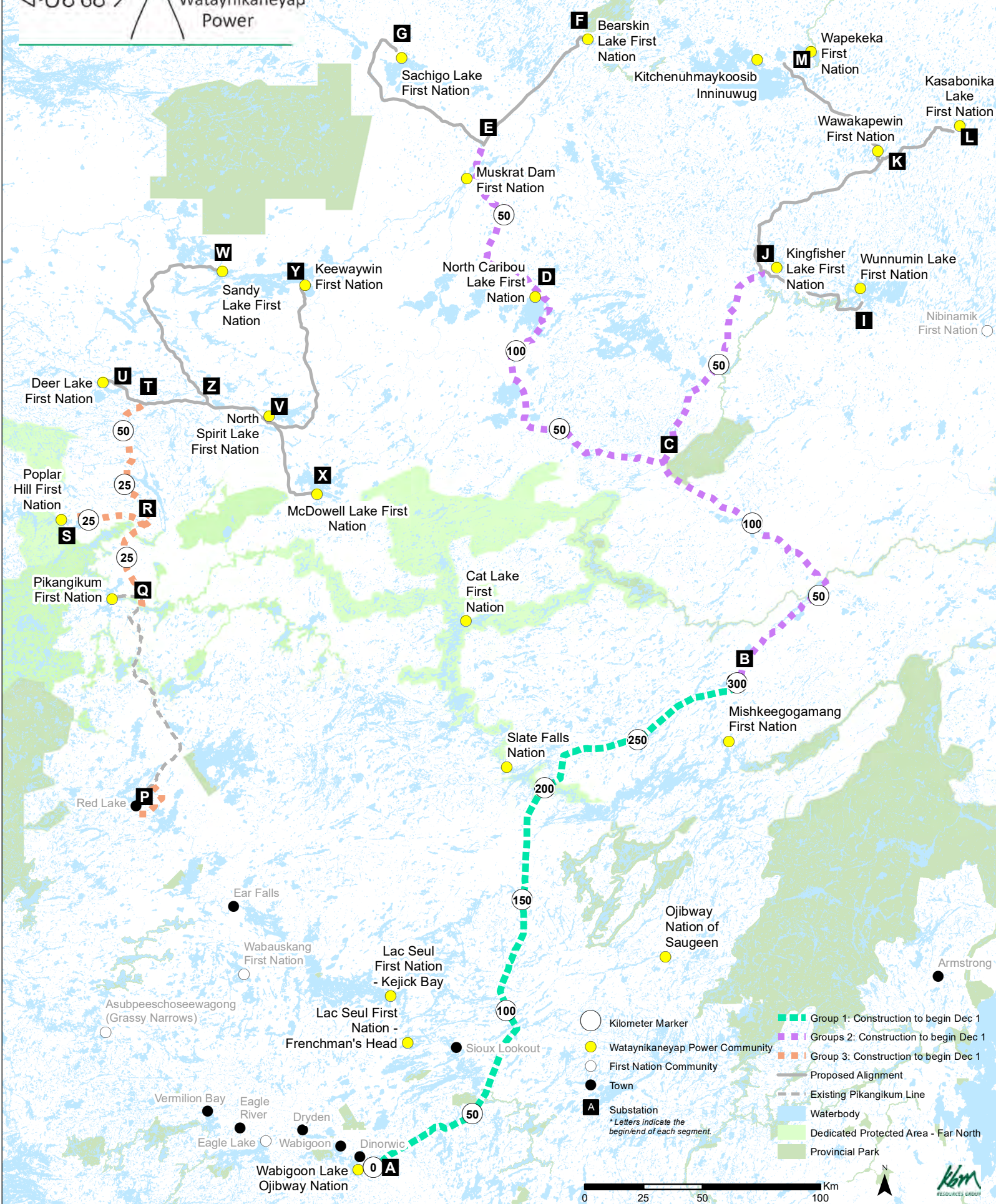
[watayinquiries@wataypower.ca](mailto:watayinquiries@wataypower.ca)





# WATAYNIKANEYAP POWER

## Construction Schedule





Activity Name	Start	Finish
<b>Group 1 - Dinorwic to Pickle Lake Transmission System</b>	<b>07-Oct-19</b>	<b>01-Jul-20</b>
<b>Regulatory / Permits</b>	<b>24-Oct-19</b>	<b>04-Mar-20</b>
Group 1 - Collect field data for water crossings	13-Nov-19	17-Nov-19
Group 1 - Survey 3rd Party Crossings	05-Nov-09	18-Nov-19
<b>Substations</b>	<b>24-Oct-19</b>	<b>04-Mar-20</b>
Group 1 - Locates	24-Oct-19	04-Mar-20
<b>Engineering</b>	<b>07-Oct-19</b>	<b>20-Nov-19</b>
<b>Substations</b>	<b>07-Oct-19</b>	<b>20-Nov-19</b>
A - WataynikaneyapSS 230kV	07-Oct-19	19-Nov-19
Group 1 - Access to site		07-Nov-19
Group 1 - Geotechnical Field Investigation Drilling & Report	08-Nov-19	19-Nov-19
B - Wataynikaneyap TS 230kV/115kV/25kV	07-Oct-19	20-Nov-19
Group 1 - Access to site		08-Nov-19
Group 1 - Geotechnical Field Investigation Drilling & Report	13-Nov-19	20-Nov-19
<b>Construction</b>	<b>10-Nov-19</b>	<b>01-Jul-20</b>
<b>Pre-Construction</b>	<b>15-Nov-19</b>	<b>01-Dec-19</b>
Camps Reconaisance, Preparation & Mobilization	15-Nov-19	01-Dec-19
Group 1 - Pickle Lake Camp, Reconaisance & Mobilization	15-Nov-19	
Group 1 - Sioux Lookout Camp, Reconaisance & Mobilization	15-Nov-19	
Group 1 - Slate Falls Camp, Reconaisance & Mobilization	01-Dec-19	
<b>Line Construction</b>	<b>10-Nov-19</b>	<b>01-Jul-20</b>
Line W54W - Km 0 to Km 303	10-Nov-19	01-Jul-20
Group 1 - W54W - Survey for ROW Flagging Km 100 to Km 000	10-Nov-19	01-Jul-20
Group 1 - W54W - Survey for ROW Flagging Km 100 to Km 168	10-Nov-19	01-Jun-20
Group 1 - W54W - Survey for ROW Flagging Km 168 to Km 1245	10-Nov-19	28-Mar-20
Group 1 - W54W - Survey for ROW Flagging Km 245 to Km 303	01-Dec-19	28-Mar-20
Group 1 - W54W -Geotechnical Field Investigation	15-Dec-19	27-Jun-20
Group 1 - W54W1 -Clearing/ROW Access Km 200 to Km 303	01-Dec-19	03-Apr-20
Group 1 - W54W1 -Clearing/ROW Access Km 0 to Km 150	01-Dec-19	24-May-20
<b>Group 2 - The Pickle Lake Transmission System</b>	<b>07-Oct-19</b>	<b>20-May-20</b>
<b>Regulatory / Permits</b>	<b>24-Oct-19</b>	<b>08-Mar-20</b>
Group 2 - Collect field data for water crossings (BC,CJ,CD,D,DE & E)	13-Nov-19	17-Nov-19
Group 2 - Survey 3rd Party Crossings	01-Dec-19	17-Dec-19
<b>Substations</b>	<b>24-Oct-19</b>	<b>08-Mar-20</b>
Group 2 - Locates	24-Oct-19	08-Mar-20
<b>Engineering</b>	<b>07-Oct-19</b>	<b>08-Nov-19</b>
<b>Substations</b>	<b>07-Oct-19</b>	<b>08-Nov-19</b>
Type 3 - C	07-Oct-19	08-Nov-19
Group 2 - Access to Site	08-Nov-19	
Type 4 - D	07-Oct-19	08-Nov-19
Group 2 - Access to Site	08-Nov-19	
Type 8 - J	07-Oct-19	08-Nov-19
Group 2 - Access to Site	08-Nov-19	
Type 8 -K	07-Oct-19	08-Nov-19
Group 2 - Access to Site	08-Nov-19	
<b>Construction</b>	<b>15-Nov-19</b>	<b>20-May-20</b>
<b>Pre-Construction</b>	<b>15-Nov-19</b>	<b>15-Nov-19</b>
Camps Reconaisance, Preparation & Mobilization	15-Nov-19	15-Nov-19
Group 2 - Pipestone Camp, Reconaisance & Mobilization	15-Nov-19	
Group 2 - Pipestone Camp & Laydown Mob	15-Nov-19	
Group 2 - North Caribou Camp, Reconaisance & Mobilization	15-Nov-19	
<b>Line Transmission</b>	<b>01-Dec-19</b>	<b>20-May-20</b>
Milestones	01-Dec-19	01-Dec-19
Group 2 - WBC Wataynikaneyap TS to Ebane/Pipestone SS Start	01-Dec-19	
Group 2 - WCJ Ebane/Pipestone SS to Kingfisher Lake TS Start	01-Dec-19	
Group 2 - WCD Ebane/Pipestone SS to North Caribou Lake TS Start	01-Dec-19	
Line WBC - Wataynikaneyap TS to Ebane/Pipestone SS	01-Dec-19	24-Mar-20
Group 2 - BC - Survey for ROW Flagging	01-Dec-19	24-Mar-20
Line WCJ - Ebane/Pipestone SS to Kingfisher Lake TS	01-Dec-19	07-Apr-20
Group 2 - CJ - Survey for ROW Flagging	01-Dec-19	29-Feb-20
Group 2 - CJ - Clearing / ROW Access Km 0 to Km 100	01-Dec-19	31-Mar-20
Group 2 - CJ - Geotechnical Field Investigation	08-Dec-19	07-Apr-20
Line WCD - Ebane/Pipestone SS to North Caribou Lake TS	01-Dec-19	20-May-20

Activity Name	Start	Finish
Group 2 - CD- Survey for ROW Flagging	01-Dec-19	13-May-20
Group 2 - CD- Clearing / ROW Access Km 0 to Km 135	01-Dec-19	13-May-20
Group 2 - CD- Geotechnical Field Investigation	08-Dec-19	20-May-20
Line WDE - North Caribou Lake TS to Muskrat DM TS	01-Dec-19	22-Mar-20
Group 2 - DE- Clearing / ROW Access (Str 0 - 275) Km 0 to Km 90	01-Dec-19	15-Mar-20
Group 2 - DE- Geotechnical Field Investigation	08-Dec-19	22-Mar-20
Group 3 - The Red Lake Transmission System	07-Oct-19	29-Feb-20
Regulatory / Permits	13-Nov-19	04-Jan-20
Group 3 - Collect field data for water crossings (RT,RS,S,QR,P1,P2)	13-Nov-19	17-Nov-19
Group 3 - Survey 3rd Party Crossings (RT,RS,S,QR,P1,P2)	15-Nov-19	04-Jan-20
Engineering	07-Oct-19	08-Nov-19
Substations	07-Oct-19	08-Nov-19
Type 8 - V	07-Oct-19	08-Nov-19
Group 3 - Access to Site	08-Nov-19	
Construction	11-Nov-19	29-Feb-20
Pre-Construction	11-Nov-19	29-Feb-20
Permission to Conduct Site Visits	11-Nov-19	13-Nov-19
Group 3 - Pikangikum Camp Scout	11-Nov-19	11-Nov-19
Group 3 - Poplar Hill Camp Scout	12-Nov-19	12-Nov-19
Group 3 - Deer Lake Camp Scout	13-Nov-19	13-Nov-19
Camps	05-Jan-20	29-Feb-20
Group 3 - Pikangikum Clearing Camp Site	05-Jan-20	07-Jan-20
Group 3 - Pikangikum Build Camp Pad	08-Jan-20	11-Jan-20
Group 3 - Pikangikum Install Septic Field	12-Jan-20	18-Jan-20
Group 3 - Pikangikum Camp Mobilization (100 Person Camp)	19-Jan-20	25-Jan-20
Group 3 - Pikangikum Camp Installation	26-Jan-20	29-Feb-20
Group 3 - Deer Lake Clearing Camp Site	05-Jan-20	07-Jan-20
Group 3 - Deer Lake Build Camp Pad	08-Jan-20	11-Jan-20
Group 3 - Deer Lake Install Septic Field	12-Jan-20	18-Jan-20
Group 3 - Deer Lake Camp Mobilization (100 Person Camp)	19-Jan-20	25-Jan-20
Group 3 - Deer Lake Camp Installation	26-Jan-20	29-Feb-20
Group 3 - Poplar Hill Clearing Camp Site	05-Jan-20	07-Jan-20
Group 3 - Poplar Hill Build Camp Pad	08-Jan-20	11-Jan-20
Group 3 - Poplar Hill Install Septic Field	12-Jan-20	18-Jan-20
Group 3 - Poplar Hill Camp Mobilization (100 Person Camp)	19-Jan-20	25-Jan-20
Group 3 - Poplar Hill Camp Installation	26-Jan-20	29-Feb-20
Tower & Yard Laydown	12-Jan-20	29-Jan-20
Group 3 - Clearing & Building Tower Yard Laydown at Poplar Hill	12-Jan-20	25-Jan-20
Group 3 - Clearing & Building Tower Yard Laydown at Deer Lake	16-Jan-20	29-Jan-20
Material Base - Off Winter Roads	30-Jan-20	05-Feb-20
Group 3 - Clear & Build North Material Base (Near Poplar Hill)	30-Jan-20	05-Feb-20
Group 3 - Clear & Build North Material Base (Near Deer Lake)	30-Jan-20	05-Feb-20
Line Transmission	15-Nov-19	22-Feb-20
Milestones	04-Jan-20	04-Jan-20
Group 3 - P1P2 Red Lake SS to P1Q Transmission Line Start	04-Jan-20	
Line P1P2 - Red Lake SS to P1Q Transmission Line	15-Nov-19	10-Jan-20
Group 3 - P1P2 Survey for ROW Flagging	15-Nov-19	14-Dec-19
Group 3 - P1P2 Clearing / ROW Access Km 0 to Km 20	01-Dec-19	17-Dec-19
Group 3 - P1P2 Geotechnical Field Investigation	08-Dec-19	10-Jan-20
Line WQR - Pikangikum TS to Poplar Hill SS	01-Dec-19	26-Jan-20
Group 3 - QR Survey for ROW Flagging	01-Dec-19	19-Jan-20
Group 3 - QR Clearing / ROW Access Km 0 to Km 43	01-Dec-19	19-Jan-20
Group 3 - QR Geotechnical Field Investigation	08-Dec-19	26-Jan-20
Line WRS - Poplar Hill SS to Poplar Hill TS	01-Dec-19	25-Jan-20
Group 3 - RS-Survey for ROW Flagging	01-Dec-19	18-Jan-20
Group 3 - RS-Clearing / ROW Access Km 0 to Km 34	01-Dec-19	18-Jan-20
Group 3 - RS-Geotechnical Field Investigation	08-Dec-19	25-Jan-20
Line WRT - Poplar Hill SS to Deer Lake SS	01-Dec-19	22-Feb-20
Group 3 - RT-Clearing / ROW Access Km 0 to Km 66	01-Dec-19	22-Feb-20