

Connectivity Studio

for Microsoft Dynamics 365 Enterprise Operations (and Microsoft Dynamics AX)

Take advantage of To-Increase Connectivity Studio for Microsoft Dynamics 365 Enterprise Operations to simplify the setup and management of integrations between your ERP and other business systems. Because the solution supports many different document types, you can directly meet your business requirements instead of managing technical details.

How Connectivity Studio Meets Business Requirements

By bringing greater simplicity and reliability as well as fast performance to your systems integrations, Connectivity Studio enables you to accomplish more, faster by means of integration:

- **Synchronized data between applications.** It is very important that your data is synchronized across all systems to avoid errors.
- **Full interoperability with Microsoft Dynamics 365 Enterprise Operations and support for its data model.** Often, tools available to work with Microsoft Dynamics 365 Enterprise Operations do not integrate fully or do not consider business rules, which means administrators have to set definitions twice.
- **Flexibility and ease in creating and updating integrations.** Instead of laborious coding, in Connectivity Studio you set up and modify integrations through efficient, standardized configurations.
- **Large amounts of data can be synchronized between applications.** Millions of records and very big files can be imported using Connectivity Studio. Parallel processing makes it possible to export and import data rapidly.
- **Periodic synchronization with external applications.** This is very useful when performance and availability are critical and real-time information is not required.



Benefits

- **Integrate Microsoft Dynamics 365 Enterprise Operations** with external applications with full support for third-party software and your customizations.
- **Simplify the setup of integration** by using configuration instead of coding.
- **Perform very large data imports and exports** quickly and reliably.
- **Produce greater business value** from applications you already own.
- **Continue working productively** with your preferred document formats such as Microsoft Excel, XML, text, fixed text, ODBC, Edifact, X12, and others.

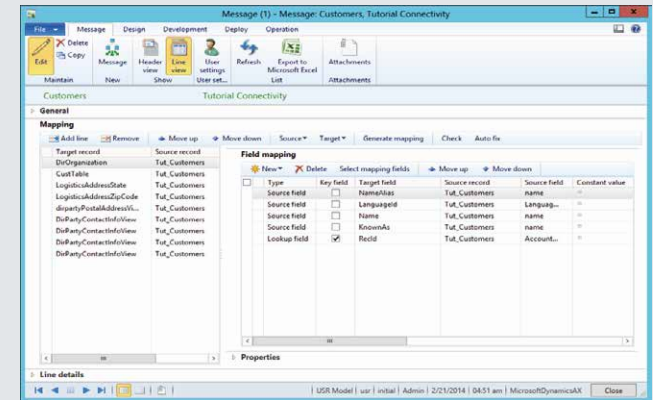
Value Scenarios for System Integrations

Connectivity Studio lets you create integrations that add value to many possible usage scenarios, including:

- **Field service:** Create integrations with mobile service solutions. Using the daily or hourly synchronization, you can update your service engineers with new jobs and efficiently import data related to inventory, transactions, materials, and hours spent.
- **Ecommerce:** Large amounts of data can be synchronized to support ecommerce and multi-channel retail processes. In Microsoft Dynamics 365 Enterprise Operations you can manage items with pictures, groupings, customer information, and more.
- **Integration with product lifecycle management (PLM) systems:** Improve the collaboration between sales and engineering, all the way from engineering to delivery, by integrating your PLM and ERP systems. You can import multi-level bills-of-materials and routings, and ready for production.
- **Retail:** Creating integrations with the systems in all stores can be very time-consuming. Instead, by using Connectivity Studio, you can import a great number of transactions from every store. Sending data the other way, you can easily update the retail locations with the latest item information and offer details.

A Component of To-Increase Business Integration Solutions

Connectivity Studio is part of the To-Increase Business Integration Solutions suite. Business Integration Solutions deliver tools that enable system managers, consultants, and developers to rapidly develop, test, and deploy integrations and migrations. Our experience shows that the ability to perform straight-forward configurations instead of coding standardizes the process of creating web services and integrations, and enables improved collaboration between business groups and IT.



Message mapping

Connectivity Studio

for Microsoft Dynamics 365 Enterprise Operations

For more information about **Connectivity Studio for Microsoft Dynamics 365 Enterprise Operations**, visit www.to-increase.com 

Features

Data and document exchange	Every table and every field of Microsoft Dynamics 365 Enterprise Operations can be exchanged. Nested tables and related fields can be exchanged by setting up a data mapping structure as a business document definition.
Advanced mapping	Provides advanced mapping capabilities to deal with the complexities of the Microsoft Dynamics 365 Enterprise Operations data model. Database transactions can be applied at document level or on a root level element.
Business rules	In most cases, the table and field validation rules for Microsoft Dynamics 365 Enterprise Operations are executed during the import process. You can also apply customized integration rules by configuring or using the extension points.
Business integration	Support integrations with a variety of systems, including warehouse management, enterprise application integration, product lifecycle management, enterprise resource management, and CRM.
Document formats	Delimiter-based (CSV), flat file, fixed text, ODBC, Microsoft Excel, Microsoft Word, EDI, and XML file (with XSD or XSLT) formats are supported. Custom formats can be used to meet specific formats.
Document actions	Perform a variety of actions on integration documents, such as pre-processing, exchange, and post-processing steps. Standard available actions include email, compression, conversion, copy/move, send/receive, and custom executables.
Connectors	Technical integration can be implemented by means of the Microsoft Dynamics 365 Enterprise Operations database, file system (folders), MSMQ, web services, email, or data connection with ODBC.
Integration Project	An Integration Project is the primary vehicle for export and import, combining the business document and connector for each integration.
Event log	An event log can be applied for each connection. Database triggers enable the log to detect insertions, deletions, modifications, and renaming.
Change log	A change log is used to bundle different data into one set, which can be exported periodically. This is very common in retail scenarios.
Staging tables	The data also can be stored in a staging table prior to import and then edited before processing.
Integration history	For each Integration Project, the system logs all exchange data in the message history.