



(08) 8232 4411

186 Hutt st Adelaide

[www.huttstreetphotos.com.au](http://www.huttstreetphotos.com.au)



# OCTOBER 2023 FULL PROCESSING SERVICES PRICE LIST



## INTRODUCTION

Hutt Street Photos and Imaging is located in the city of Adelaide. We serve a wide range of private clients and industries: advertising agencies, professional photographers, law firms, architects, engineering firms and manufacturers - any industry that requires quality state-of-the-art photographic services. We are continuously striving to stay on the cutting edge of digital technology. We use a Noritsu digital photographic lab and an Epson 6070 24" printer in our Hutt St location and offer extended weekday hours (9a.m. to 5:30 p.m.), as well as Saturday trading from 10am to 1pm. Special shipping arrangements (at cost) can be made for your order so you can get the job done and delivered on time to other locations.

**Our mission: To accommodate our customers' needs with the highest quality and a quick turnaround, at a realistic price.**

When you call or come into our store, you will be cheerfully received and given a specialist for your type of order. Our primary goal is your satisfaction. Your work is important to us. We are here to help you excel.

**COPYRIGHTED MATERIAL:** Purchaser represents and warrants that by requesting Hutt St Photos to reproduce any copyrighted work, purchaser has either: (1) obtained permission from the copyright owner to reproduce, distribute and display such copyrighted work, or (2) will use the reproductions prepared by Hutt St Photos solely for teaching, research, scholarship, or for criticism, comment or reporting, and will not sell or use the reproduction in any manner to direct financial detriment of the copyright owner, or in any other manner which infringes any copyright. The customer assumes all liabilities under copyright laws. Purchaser agrees to hold harmless and to indemnify Hutt St Photos for all cost, expenses, legal fees, or judgments resulting from any claim or lawsuit against Hutt St Photos at the request of the purchaser. We reserve the right to ask you to sign an indemnity form if there is any doubt regarding copyright.

**PAINTINGS AND ARTWORKS:** Due to insurance and copyright issues, we do NOT copy paintings, posters or artworks.

**LIABILITY:** We use extreme care in working with your prints and original artwork. Submitting any film, slide, transparency, negative, digital media, rendering, blueprint or artwork to Hutt St Photos for processing constitutes an agreement by you that if such film, slide, transparency, negative, digital media, rendering, blueprint or artwork is damaged, lost or not returned by us, our liability is limited to the replacement of an equivalent amount of unexposed film or paper. Original art will be left at customer risk only and is not subject to replacement. Hutt St Photos assumes no liability for loss or damage to orders during transportation to and from our office. Any item of value sent by the customer should have the necessary insurance to cover any such occurrence. Colour photographic dyes may change over a period of time. Therefore, we will not be responsible for any changes in colour or density.

**REGULAR BUSINESS HOURS:** Our Hutt St store is open 9 am to 5:30 pm Monday through Friday and 10:00am to 1:00pm Saturdays. We are available to work outside these hours. Please refer to overtime services below.

**SERVICE SCHEDULE:** All quoted production times are for each individual process. This time does not include Saturdays and Sundays. Also, times advised are "in lab" times, and do not include time required for ordering custom or special materials, pickup, delivery or shipping. When multiple products or services are required from the same original, all production time will be added in sequence. Print production time does not include time needed for dupes or for mounting. Large quantity orders may effect the turnaround times.

**OVERTIME SERVICES:** Should you require us to work over-time, there will be an additional charge of up to \$50 per person hour, plus the cost of the service. There will be up to a \$250 charge for opening late on Saturday, and a \$350 charge for opening, plus \$70 per person hour Sundays plus the cost of services.

**RUSH CHARGES:** Rush charges will apply to certain services and will vary depending on the type and number of services requested and the size of the job. Hutt St Photos will make every effort to notify clients in advance whenever rush charges apply.

**DIGITAL FILES:** Our equipment operates on an industry standard sRGB JPEG file format. If you supply files in another format, we reserve the right to add additional charges to the order to cover our time involved in converting files. Files supplied as CMYK format will need to be converted, and an appropriate charge will be added. If you supply your own digital files for printing, please ensure they are sRGB 300dpi and sized correctly for printing. If the files are not sized to our standard printing sizes, please canvas the image to fit these standard sizes

**APPROVAL PRINTS:** On large quantity jobs, we may require an approval print. The approval print must be signed and returned in a timely manner. The time taken to approve a print is in addition to in lab service time.

**REMAKES:** Jobs requiring remakes must have the original and the prints returned within 2 working days to be reviewed by us. All work done by us must be returned along with the original invoice.

**CUSTOMER STOCK:** Customer stock can pose special technical problems. We reserve the right to refuse to use any customer stock or to impose additional charges for using customer stock. The use of customer-supplied stock does not entitle the customer to a discount.

**ODD SIZE PRINTS:** Odd size prints will be billed based on the paper size necessary to print your request.

**EMAILED PHOTOS.** Digital files can be emailed to [photos@huttstreetphotos.com.au](mailto:photos@huttstreetphotos.com.au). You can attach your files to the email with printing instructions. Please do not embed your files in the email. As a precaution, please send us an email with nothing attached to tell us you are sending some files. This way we will be able to advise if the files do not make it, or are rejected by your ISP. Our website is an easier way to order photos, and online orders, via the website, will always receive priority.

**CREDIT CARDS:** We accept Visa, MasterCard, American Express and Diners Club credit cards fee free. Charges will not be applied to your card until your work is completed and we do NOT charge a credit card fee.

**ESTIMATES:** Estimates are based on our good faith estimate of the cost/time required to complete the job according to client instructions. Final cost/time of the job may vary if client's instructions change during the course of the job, if additional labour or computer time is required, if additional pick-ups are necessary because originals needed to complete the job were not included or if the deadline for completion is changed and rush charges apply. Please note that significant image manipulation, or "Photoshopping", of files will be charged at \$65 per hour.

**POSTAGE AND SHIPPING:** We are happy to return orders, and supply stock via Australia Post. We will endeavour to recycle packaging to reduce costs, and postage quotes are obtained from the local Post Office, who are only 4 doors away from us. Postage fees will be added to the final cost of the order at our discretion.

Every effort has been made to produce this listing without error. Should any occur, we reserve the right to correct.

**ALL PRICES ARE SUBJECT TO CHANGE WITHOUT NOTICE**

Contact us.

Account queries: 08-8227 0310 or [accounts@huttstreetphotos.com.au](mailto:accounts@huttstreetphotos.com.au)

Hutt Street Photos and Imaging: 08-8232 4411 or [photos@huttstreetphotos.com.au](mailto:photos@huttstreetphotos.com.au)

Orders and stock queries: Alan Logue: 08-82324411  
[photos@huttstreetphotos.com.au](mailto:photos@huttstreetphotos.com.au)

## STANDARD PROCESSING AND SCANNING

	C41 Colour Neg	Price	B&W Neg	Price	E6 Slide	Price
<b>Develop Only WS7</b>	APS & 35mm	<b>\$10.00</b>	35mm	<b>\$16.00</b>	35mm	<b>\$22.00</b>
	120	<b>\$10.00</b>	120	<b>\$16.00</b>	120	<b>\$16.00</b>
<b>Develop &amp; Standard Scan (2000 x 3000)</b>	APS 35mm 12/24/27	<b>\$15.00</b>	APS 35mm 12/24/27	<b>\$20.00</b>		
	APS & 35mm 36/39/40	<b>\$17.00</b>	APS & 35mm 36/39/40	<b>\$24.00</b>	35mm	<b>\$32.00</b>
	120	<b>\$18.50</b>	120	<b>\$23.00</b>	120	<b>\$26.00</b>
<b>Develop &amp; ProRes Scan (4490 x 6770)</b>	APS 35mm 12/24/27	<b>\$42.00</b>	APS 35mm 12/24/27	<b>\$49.00</b>		
	APS & 35mm 36/39/40	<b>\$47.00</b>	APS & 35mm 36/39/40	<b>\$54.00</b>	35mm	<b>\$63.00</b>
	120	<b>\$37.00</b>	120	<b>\$47.00</b>	120	<b>\$52.00</b>
<b>Develop &amp; Print (4"x6")</b>	APS 35mm 12/24/27	<b>\$21.00</b>	APS 35mm 12/24/27	<b>\$32.00</b>		
	APS 35mm 36/39/40	<b>\$26.00</b>	APS 35mm 36/39/40	<b>\$36.00</b>	35mm	<b>\$38.00</b>
	120	<b>Dev + \$1.20 per photo</b>	120	<b>Dev + \$1.20 per photo</b>	120	<b>Dev + \$1.20 per photo</b>
<b>Extra Set (4"x6")</b>	APS 35mm 12/24/27	<b>\$10 per set</b>	APS 35mm 12/24/27	<b>\$10 per set</b>		
	APS 35mm 36/39/40	<b>\$11 per set</b>	APS 35mm 36/39/40	<b>\$11 per set</b>	35mm	<b>\$11 per set</b>
<b>Develop, Print (4"x6") &amp; Scan</b>	APS 35mm 12/24/27	<b>\$28.00</b>	APS 35mm 12/24/27	<b>\$38.00</b>		
	APS 35mm 36/39/40	<b>\$33.00</b>	APS 35mm 36/39/40	<b>\$41.00</b>	35mm	<b>\$45.00</b>
	120	<b>Dev + \$1.20 per photo</b>	120	<b>Dev + \$1.20 per photo</b>	120	<b>Dev + \$1.20 per photo</b>
<b>Develop, Print (4x6" 2 sets) &amp; Scan</b>	APS 35mm 12/24/27	<b>\$10 per set</b>	APS 35mm 12/24/27	<b>\$10 per set</b>		
	APS 35mm 36/39/40	<b>\$11 per set</b>	APS 35mm 36/39/40	<b>\$11 per set</b>	35mm	<b>\$11 per set</b>
	120	<b>plus '\$1.20 per photo</b>	120	<b>plus '\$1.20 per photo</b>	120	<b>plus '\$1.20 per photo</b>

Push processing C41/BW \$8 extra per film. E6 \$9 extra per film. Blank E6 \$10. Blank C41/BW \$4 per film.

DEVELOPING AND PRINTING DETAILS

Surface: All photos printed on Kodak Professional Gloss paper, unless Matt is specifically requested.  
Index prints: Included with all D&P, no extra charge.  
Borders: All photos printed full bleed unless borders are requested. No extra charge for white borders.  
Panoramic D&P: Add 50c per panorama photo to regular D&P price.

INDEX PRINTS (40 images per print)

10cm x 15cm from uncut film/disc	\$2.00 ea
10cm x 15cm from cut film	\$4.00 ea
20cm x 25cm from uncut film/disc	\$8.00 ea
20cm x 25cm from cut film	\$12.00 ea

HALF FRAME PRINTING.

Half frame films will normally be printed on the basis of one print per negative.  
On request only, we can print 2 negatives per photo.

Half Frame printing costs are on a per print basis of .40 cents per photo, plus the film developing charge, if applicable

110/126 DEVELOPING and PRINTING

Film developing \$10 per roll.

110 and 126 standard size photos from each negative \$6 each.  
Scanning of 110 or 126 negatives \$6 each

SCANS/PRINTS FROM DISC NEGATIVES      \$8.00 EACH



FILES SAVED TO ARCHIVAL OR M-DISCS (See page 8).

Archival Discs (DVD-R)	\$10 extra per disc.
M-Discs (DVD-R)	\$20 extra per disc.

## FILE TYPES, RESOLUTION, DPI, COLOUR SPACE AND ALL THAT STUFF!

If you want to provide us with files set up the way YOU want, there are some things you need to keep in mind.

Our Noritsu lab (like all similar machines) prints in the Adobe sRGB colourspace, so if you convert your files into this colourspace you will be on the path to the prints matching your monitor.

On the subject of your monitor, have you calibrated it? There is more to it than just adjusting the brightness and colour balance. If you are using Adobe Photoshop, you should at least use the monitor gamma adjustment, which comes with Photoshop. If you want to do more, use a spectrophotometer like a Colorvision Spyder or Gretag Eye-One.

We have a simple monitor calibration kit available – just ask us – its free!

As regards file formats, we prefer .jpg files for printing, but we can accommodate .bmp, .tif and .psd among others.

If you size your files at 300dpi you will avoid excessively large files, and obtain the best results. If you have heard stories of 600dpi and 1200dpi and think our 300dpi is low, you should remember that inkjet printers use tiny drops of ink to get the result they give. The smaller the dots of ink (higher DPI), the better.

Photographic labs print on silver halide photographic paper (just like the good old days when we used film!), and the lasers give a continuous tone to get the final print. There are no dots, so the 300dpi figure is used only to calculate file size. Whether the file is 1200dpi or 300dpi, it makes no difference other than making the file bigger. The result will be the same.

If you have an “odd” size file which you need printed at a specific size, then canvas it in Photoshop up to one of our standard print sizes. If you need more information on this, just ask us.

### Standard Photographic Print Sizes.

Imperial	Metric	Imperial	Metric	Imperial	Metric
2 ½ “ x 3 ½”	6cm x 9cm	8” x 8”	20cm x 20cm	20” x 24”	51cm x 61cm
3 ½” x 5”	9cm x 13cm	8” x 10”	20cm x 25cm	20” x 30”	51cm x 76cm
4” x 4”	10cm x 10cm	8” x 12”	20cm x 30cm	24” x 36”	61cm x 91cm
4” x 5 1/3”	10cm x 13cm	8” x 24”	20cm x 61cm		
4” x 6”	10cm x 15cm	10” x 10”	25cm x 25cm		
4” x 7”	10cm x 18cm	10” x 12”	25cm x 30cm		
4” x 12”	10cm x 30cm	10” x 13”	25cm x 33cm		
5” x 5”	13cm x 13cm	10” x 15”	25cm x 38cm		
5” x 7”	13cm x 18cm	11” x 14”	28cm x 35cm		
5” x 7 ½”	13cm x 19cm	12” x 16”	30cm x 41cm		
6” x 6”	15cm x 15cm	12” x 18”	30cm x 45cm		
6” x 8”	15cm x 20cm	12” x 36”	30cm x 91cm		
6” x 9”	15cm x 23cm	16” x 20”	40cm x 51cm		
7” x 10”	18cm x 25cm	16” x 24”	40cm x 61cm		

## OLD, OBSCURE and OUT OF DATE FILM FORMATS.

### 110 Format

Introduced in the 70's, these were known as Pocket Instamatic films. The negatives are very small, and the quality was barely good enough to make a normal size photo. The films were available in colour print, black and white print and colour slides.

*We can still develop and print colour and black and white print films, although the quality is getting worse as time goes on.*

110 negatives can be printed, but it is a very manual process.

Colour slide film can no longer be processed BUT processed and mounted slides can be scanned, albeit that we need to jump through a few hoops to do it. There is a surcharge on scanning 110 slides due to the additional extra handling required to scan them.



### 126 Format

Introduced in the 60's, this was a very popular and easy to use square format capable of good results. It was available in color print, black and white print, and colour slide varieties. We can still process and print the colour and black and white print films, but, as with 110 films, the colour slide films cannot be processed.

126 negatives can be printed, but it is a very manual process, like the 110 negs.

126 Slides can be scanned without any surcharges as they are mounted in the same mounts as 35mm slides.

### APS Format

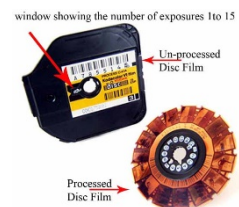
APS was introduced in the 90's and was a very flexible film system with cameras being able to take standard and panoramic photos on the same film.

The film can still be processed, printed and scanned, however age is taking its toll on unprocessed films. We no longer sell the film as it is now several years out of date, and we cannot guarantee film quality



### Disc Film

Disc appeared around the late 80s and was a convenient way to load a film which was effectively a flat disc. The quality was, and still is, very average. Disc films can still be printed/scanned, but they require significant additional handling to produce a result and the results are not getting any better with time. All Disc film is significantly out of date now and processing is no longer available.





# **REPRINTS & ENLARGEMENTS (MATT unless Gloss is specified)**

## **DIGITAL FILES and 35mm/APS NEGATIVES**

1 – 50

51 – 200

200+

VW/Mini Prints	0.90	0.50	0.45
3 1/2x5"/9x13cm	0.70	0.50	0.45
4x4"/10x10cm	0.55	0.50	0.45
4x6"/10x15cm	0.55	0.50	0.45
4x5.3"/10x13cm	0.55	0.50	0.45
4x8"/10x20cm	1.30	0.90	0.80
5x6"/13x15cm	0.90	0.60	0.50
4x10"/10x25cm	1.30	0.80	0.70
4x12"/10x30cm	1.50	1.00	0.80
4x14"/10x35cm	2.50	1.95	1.60
4x24"/10x60cm	9.95	7.95	5.95
5x5"/13x13cm	3.95	2.95	2.50
5x7"/13x18cm	3.95	3.25	2.50
5x14"/13x35cm	6.95	4.95	4.50
6x8"/15x20cm	5.95	4.00	3.20
6x9"/15x23cm	6.50	4.10	3.20
6x12"/15x30cm	8.50	6.50	4.50
6x14"/15x35cm	9.50	6.95	5.10
6x24"/15x60cm	14.95	10.50	6.50
7x10"/18x25cm	9.95	6.50	5.00
8x8"/20x20cm	9.95	6.50	5.00
8x10"/20x25cm	9.95	6.50	5.00
8x12"/20x30cm	10.95	7.50	6.00
A4 (21x30cm)	10.95	7.50	6.00
8x14"/20x35cm	11.95	9.00	8.00
8x24"/20x60cm	19.95	15.00	11.00
8x36"/20x90cm	21.95	16.95	12.00
10x10"/25x25cm	16.95	15.50	12.00
10x12"/25x30cm	16.95	15.50	12.00
10x13"/25x33cm	16.95	15.50	12.00
10x15"/25x38cm	17.95	16.00	13.00
10x20"/25x50cm	29.00	24.00	20.00
11x14"/28x35cm	18.95	16.00	14.00
11x15"/28x38cm	18.95	16.00	14.00
11x16"/28x40cm	19.95	16.00	13.00
12x12"/30x30cm	22.00	16.00	12.50
12x15"/30x38cm	22.95	17.50	14.00
12x16"/30x40cm	23.95	21.00	15.00
12x18"/30x45cm	25.95	21.00	18.00
A3 (30x42cm)	25.95	21.00	18.00
12x24"/30x60cm	29.95	23.00	19.00
12x36"/30x91cm	42.95	35.00	29.00
33cm x 65cm	42.00	32.00	27.00
16x20"/40x50cm	32.00	27.00	24.00
16x24"/40x60cm	43.00	37.00	34.00
42cm x 81cm	44.00	40.00	38.00
20x24"/50x60cm	47.00	41.00	36.00
20x30"/50x75cm	57.00	50.00	45.00
24x36"/61x91cm	95.00	80.00	70.00
36"x36"/1Mx1M	240.00	230.00	220.00

**Note that ALL prints and enlargements are colour and density corrected for optimum colour balance and exposure. They are NOT just machine printed.**

\*Colour Matching on enlargements to an original print +150%

Cropping \$2.50 per image



**PHOTOS FROM PHOTOS – \*Check Shoebox Scan Details (P22) for scanning quantities of 50+ prints**

	1 – 10	11 – 50	51 +
3 1/2x5"/9x13cm	3.50	3.50	3.00
4x6"/10x15cm	3.50	3.50	3.00
4x5.3"/10x13cm	3.50	3.50	3.00
5x6"/13x15cm	3.50	3.50	3.00
4x12"/10x30cm	4.00	3.50	3.00
5x7"/13x18cm	5.50	5.00	4.00
6x8"/15x20cm	8.50	7.50	5.50
6x9"/15x23cm	8.95	7.95	5.95
8x10"/20x25cm	10.95	9.50	8.00
8x12"/20x30cm	12.95	11.00	9.00
8x24"/20x60cm	19.95	17.95	15.00
10x15"/25x38cm	18.95	17.50	16.50
11x14"/28x35cm	18.95	17.50	16.50
12x16"/30x40cm	23.85	21.95	17.70
12x18"/30x45cm	24.95	22.50	21.00
12x36"/30x91cm	42.95	38.00	36.00
16x20"/40x50cm	29.95	27.95	25.50
16x24"/40x60cm	39.95	36.95	34.50
20x24"/50x60cm	44.00	41.00	37.00
20x30"/50x75cm	56.00	52.00	47.00
24x36"/61x91cm	79.95	75.00	71.00

**PHOTOS FROM 35mm AND 126 SLIDES**

	1 – 50	51 – 150	151+
3 1/2x5"/9x13cm	2.50	2.25	2.00
4X4"/10X10C			
4x6"/10x15cm	2.50	2.25	2.00
4x5.3"/10x13cm	2.50	2.25	2.00
5x6"/13x15cm	2.50	2.25	2.00
4x12"/10x30cm	4.00	3.50	3.00
5x7"/13x18cm	5.50	5.00	4.00
6x8"/15x20cm	8.50	7.50	5.50
6x9"/15x23cm	8.95	7.95	5.95
8x10"/20x25cm	10.95	9.50	8.00
8x12"/20x30cm	12.95	11.00	10.00
8x24"/20x60cm	19.95	17.95	15.00
10x15"/25x38cm	18.95	17.50	16.50
11x14"/28x35cm	18.95	17.50	16.50
12x16"/30x40cm	23.85	21.95	17.70
12x18"/30x45cm	24.95	22.50	21.00
12x36"/30x91cm	42.95	38.00	36.00
16x20"/40x50cm	29.95	27.95	25.50
16x24"/40x60cm	39.95	36.95	34.50
20x24"/50x60cm	44.00	41.00	37.00
20x30"/50x75cm	56.00	52.00	47.00
24x36"/61x91cm	79.95	75.00	71.00

**Note that ALL photos and enlargements are colour and density corrected for optimum colour balance and exposure. They are NOT just machine printed.**

Colour Matching on enlargements to an original print +150% **110 Slides +50% surcharge**

## DIGITAL SERVICES

### 35mm/APS Colour Negatives SCAN TO Disc or supplied USB.

All discs are closed sessions and nothing can be added or removed once burned. The prices below include the cost of the disc. Where multiple films are being scanned, all rolls will be scanned to the 1 disc/usb unless requested otherwise. Unless USB drives are supplied, we will supply from stock.

Minimum charge on all is scanning \$6. Duplicate Disc \$10

TIFF files are available upon request at 50% extra.

#### Resolution (35mm)

Preview (special request only)	1024x1545 pixels	app.750kb JPG file	4.5mb tiff
Standard	2048x3072 pixels	app. 2.2mb JPG file	17mb tiff
PROres	4492x6774 pixels	app. 14mb JPG file	80mb tiff

35mm & APS Standard Resolution Scans to Disc at time of developing and printing \$7 + D&P

**Special Bulk Rate (10 strips or more)** for 35mm cut strips of 4,5 or 6 negatives, where **EVERY** negative is to be scanned.....

Per strip 4 or 5.... \$3 Standard Res scan / \$8 PROres scan

Per strip of 6..... \$4 Standard Res scan / \$11 PROres scan

## Slide Scanning

Scanned to Disc (Standard resolution),  
Preview or PROres resolution only on request.  
Files supplied on disc or USB.

Optimised colour correction on each slide

Slipcase case supplied with disc

DVD Slideshow 1-100 \$70

Per each additional 100 images \$50 (max 999) Refer page 23



#### 35mm mounted slides

	Standard	PROres
1-100	2.50	9.00
101-300 (min 4 days)	2.00	7.00
300+ (min 10 days)	1.20	4.00

*For slides, "4"x6" print and scan" combo price: Only 60c extra on top of the scan price.*

110 Slides will attract a 50% surcharge for scanning

We will do our best to have large orders of slides, negatives or prints completed in a reasonable time period. Should a large job be urgent, we reserve the right to add a "rush" charge, but we will discuss this at the time of taking the order

## DIGITAL SERVICES (continued)

Print Scanning		300 dpi	600 dpi	1200dpi
Up to 13x18cm	1-50	3.50	5.00	8.00
	50+	3.00	5.00	7.00
Up to 20x25cm	1-50	5.00	10.00	14.00
	50+	4.00	9.00	12.00

300 dpi Print Scans from A4 up to A3 \$8

Originals larger than A3 \$45 each

600 dpi Print Scans from A4 up to A3 \$10

For larger quantities, please refer to our Shoebox scanning service on page 22

Please note that large, framed photos will need to be removed from their frames to be copied. A handling fee of \$50 per frame will apply. As we are not picture framers, please note we do not have all the equipment required to re-frame the photos.

**If photos are supplied in albums, or if photos are glued to pages, the manual scan price, per photo, will apply.**

**PAINTINGS AND ARTWORKS:** Due to insurance and copyright issues, we do NOT copy paintings, posters or artworks.

## RESTORATION

Range of photographic restoration services depending on needs and prices vary for each individual job, the following is a guide only.

Actual quotes will only be given after sighting the original photo.

Job times vary depending on amount of restoration work to be done, but they are generally done within 7 working days.

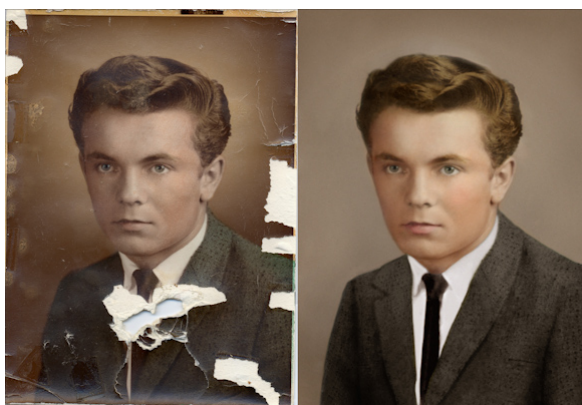
Light Restoration	\$70.00
Medium Restoration	\$99.00
Heavy Restoration	\$150.00 +
Custom Work/Manipulation	\$99 per hour

**Light:** Generally, involves the removal of minor blemishes, scratches, small creases, watermarks, and date imprints from edges and background detail of photo. Basic restoration of colour from faded and light damaged photos.

**Medium:** Colorising, removal of scratches, blemishes, creases, watermarks, stains. Improvement of colour balance and contrast from faded and light damaged images. Some basic cloning and cropping of details as needed.

**Heavy:** Generally, involves the rebuilding of faces or missing sections of photos. Rebuilding completely ripped photos, major reconstruction. This is the grand plastic surgery choice when no other option will suffice.

**All restoration work is supplied on a CD for archiving, sharing and reprinting.**  
**Additional prints made from restored images are printed at Digital Reprint prices.**



## IMAGE RECOVERY FROM MEMORY CARDS

If you have a memory card and your images have "disappeared", or you have accidentally deleted or formatted the memory card, then we may be able to help you.

**First of all, DO NOTHING to the card, and in particular, DO NOT TAKE ANY MORE PHOTOS ON IT!**

Bring in, or post, the card to us and we will use a variety of non destructive programs to analyse your card, and attempt to recover the files.

It is not always a quick process, and whilst we can make no guarantees, we will promise to do our utmost to find your files.

If we cannot recover any files, we will not charge you.

Recovery Fees are as follows:

Memory Cards up to 4GB	\$55 (includes files saved onto disc*)
Memory Cards over 4GB	\$85 (includes files saved onto a flash drive at additional cost of drive)

\* USB drives can be supplied at additional cost.

### File Transfer from memory cards to Disc

Memory cards to Disc	\$15 per disc
----------------------	---------------

### Mobile Phone Data Backup

Please note that with so many phones and variations we may not be able to get all your files from your phone. Photos "in the cloud" are not backed up as they are not stored on the actual device.

Setup/Handling Fee	\$110
Files to Disc	\$65 per USB (additional cost)



## MEDIUM FORMAT REPRINTS / ENLARGEMENTS

### GLOSS or MATT

1 -50      50+

3 ½ x 5/9x13cm	2.00	1.60
4x4"/10x10cm 4 x 6"/10x15cm	2.00	1.60
5 x 7"/13x18cm	5.95	5.10
6 x 8"/15x20cm	8.95	6.95
8 x 10"/20x25cm	11.95	10.00
8 x 12"/20x30cm	12.95	11.00
11 x 14"/28x35cm	18.95	16.95
12 x 18"/30x45cm	25.95	22.95
16 x 20"/40x50cm	31.95	28.95
20 x 24"/50x60cm	44.95	39.95
20 x 30"/50x75cm	56.00	50.00

GHP

Cropping \$2.50 per image

### Printing/Scanning Non Standard negative sizes/film types to 4x6"/10x15cm

116/616/122 Negatives, approx 9x15cm in size	\$15 each
127 Negatives or Slides, approx 3x3.5cm, 4x4cm or 4x6cm	\$6 each



## MEDIUM FORMAT SCANNING

Medium Format scanning covers 120, 220 and 620 films, with image sizes of 6x4.5cm, 6x6cm, 6x7cm, 6x8cm and 6x9cm. Any old negatives or films with different size negatives will require manual handling (refer to the following page)

Minimum charge on all scanning \$6

**TIFF files are 50% extra, only on request**

### Scan Resolutions (approx)

	6x4.5	6x6	6x7	6x9
Preview	1398x1024	1040x1024	1258x1024	1491x1024
Standard	2796x2048	2097x2048	2511x2048	2982x2048
Ultra	4824x3533	4832x4760	5902x4815	7139x4903

### 120 cut film (per neg/slide)

	Preview	Standard	PROres
1-50	4.00	4.00	8.00
51+	3.00	3.00	7.00

Minimum charge on all scanning \$6. Duplicate disc \$10

Scanning mounted 6cm x 6cm slides (Glass or Cardboard) Min 10 days

### (per neg/slide)

	1200 dpi scan	2400 dpi scan
1-30	10.00	14.00
31+	9.00	12.00

## LARGE FORMAT, NON STANDARD SIZE DEVELOPING, PRINTING & SCANNING

4x5 sheet film    DEV    C4-1 \$25 ea    E-6 \$35 ea    SCANNING    \$30 each

All Glass Plates    SCANNING    \$35 each

8x10 sheet film    Developing POA    SCANNING    \$50 each

### Widelux/Wide Format Panorama Scanning

6x13cm/6x17cm Negs/slides    \$8 per neg/slide. Scanned at 1200dpi  
 6x13cm/6x17cm Negs/slides    \$12 per neg/slide. Scanned at 2400dpi



## Scanning Non Standard negative sizes/film types.

These negatives are basically anything other than 120/220 roll film negs or slides, and, as such they require considerable additional work to scan, correct and print.

116/616/122/124 Negatives, approx 9x15cm in size      \$15 each

127 Negatives or Slides  
Approx 3x3.5cm, 4x4cm or 4x6cm      \$6 each

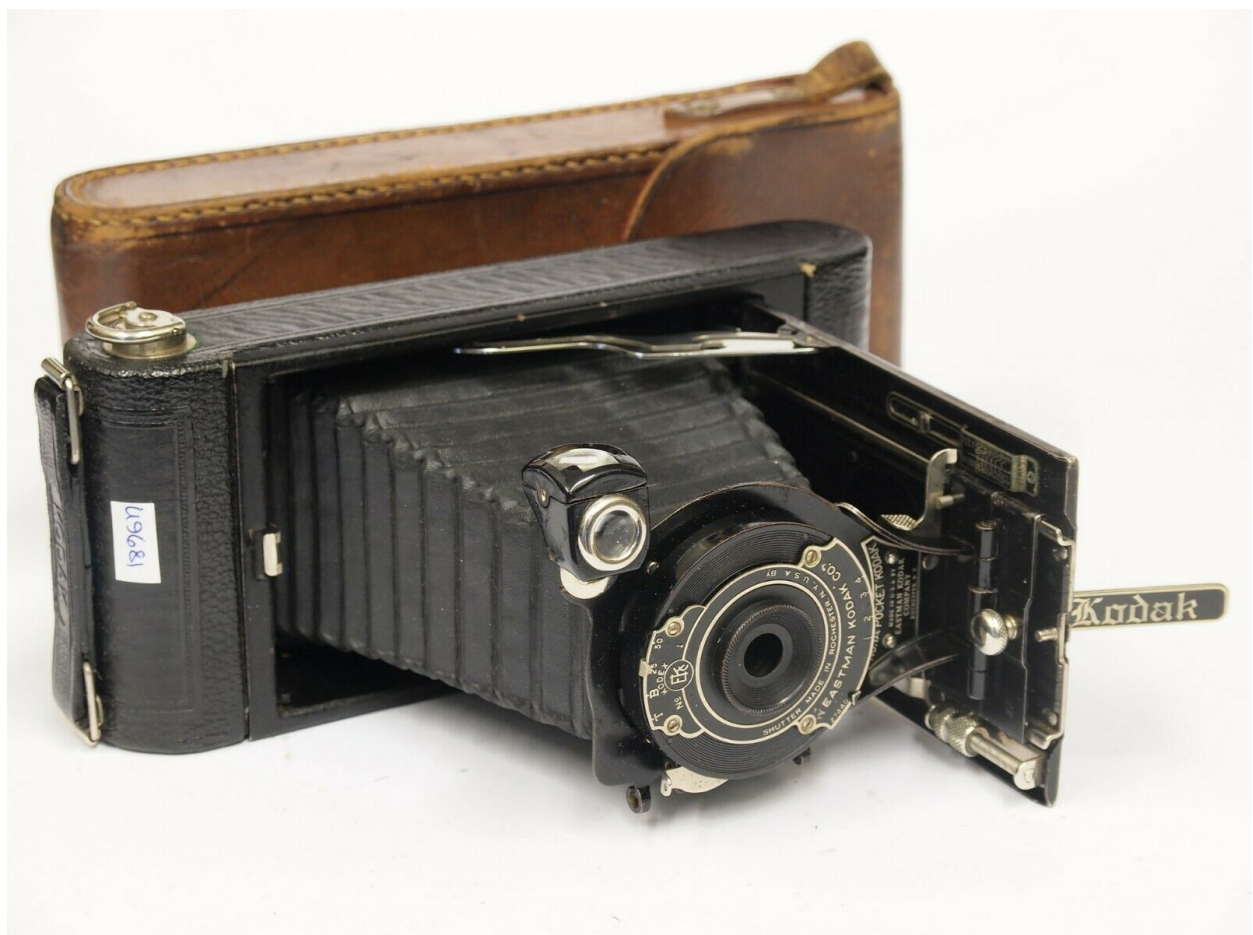
Prints from these negatives will be charged at the Scanning cost plus normal digital print cost.

If you are uncertain of what negative it is, give us a call or send it in and we will let you know.

Minimum charge on all scanning \$6

**TIFF files are 50% extra, only on request**

Minimum charge on all scanning \$6. Duplicate disc \$10



## HORIZON and HASSELBLAD X- PAN SERVICES

Yes, we do know what X-Pan and Horizon Cameras are, and we are able to professionally print the negatives from these fantastic cameras!

### DEVELOPING

35mm C41	Develop Only	\$10
B&W	Develop Only	\$16

### INDEX PRINTS

10x15cm/4"x 6" at time of developing	\$2.00
10x15cm/4"x 6" from cut film	\$4.00
20x30cm/8"x 12" at time of developing	\$8.95
20x30cm/8"x 12" from cut film	\$12.95

### PRINTING

Surface: All photos printed on Gloss paper, unless Matt is specifically requested.

Index prints: Included with all D&P, no extra charge.

Borders: All photos printed full bleed unless borders are requested. No extra charge for white borders.

### DEVELOP & PRINT – GLOSS / MATT\*

10x30cm/4" x 12" photos: Develop + \$2.00 per print

13cmx35cm/5" x 14" photos: Develop + \$4.00 per print

### DIGITAL SERVICES\*

#### Scan Resolutions

Normal	Panorama
1200 x 1600	1024 x 2804
2048 x 3072	2048 x 5635
4492 x 6774	4492 x 12297

Preview  
Standard  
PROres



## HASSELBLAD X- PAN REPRINTS & ENLARGEMENTS

MATT / GLOSS

	1 – 10	11 – 30	31+
4 x 12"	3.00	2.50	2.00
5 x 14"	6.95	6.00	5.00
6 x 18"	10.95	9.95	8.95
7 x 20"	16.95	14.95	12.95
8 x 24"	29.95	26.95	24.95
10 x 30"	39.95	35.95	32.95
12 x 36"	49.95	44.95	42.95

Cropping \$2.50 per image

## LOMO SPROCKET AND SPINNER MANUAL SCANS

These negatives MUST be manually scanned.

The length of the print will be determined by the length of the negative

4" print (1200dpi scan)	\$6.00 each
6" print (1800dpi scan)	\$9.00 each
8" print (2400dpi scan)	\$12.00 each



## CANVAS ART PRINTS

	Canvas Only	Complete
8x10"/20x25cm	45.00	85.00
8x12"/20x30cm	45.00	85.00
10x15"/25x38cm	70.00	105.00
11x14"/28x35cm	80.00	120.00
11x17" (A3)	80.00	130.00
12x12"/30x30cm	80.00	135.00
12x16"/30x40cm	100.00	155.00
12x18"/30x45cm	100.00	155.00
12x24"/30x60cm	120.00	160.00
12x40"/30x100cm	250.00	350.00
16x16"/40x40cm	120.00	170.00
16x20"/40x50cm	120.00	170.00
16x24"/40x60cm	130.00	195.00
17x22" (A2)	130.00	195.00
20x24"/50x60cm	160.00	230.00
20x30"/50x75cm	180.00	280.00
20x40"/50x100cm	280.00	380.00
20x60"/50x150cm	350.00	490.00
23x34" (A1)*	250.00	350.00
24x24"/60x60cm*	240.00	300.00
24x36"/60x90cm*	260.00	350.00
30x30"/75x75cm*	320.00	400.00
30x60"/75x150cm*	480.00	650.00
40x40"/100x100cm*	550.00	670.00

Images are printed on specially treated cotton canvas. All canvas will include a 30mm border, ready for stretching and hanging.

Canvas prints are supplied on custom made wood art stretchers, or they can be supplied flat (Canvas Only) for posting if required.

Lead-time: Canvas only is 3 working days

Completed Order 7 working days.

All canvas art prints will be printed with a mirror border (Unless requested otherwise) to wrap around the frame.

Non-standard sizes: POA

Please note the when printing canvas art prints from old or damaged photos, additional restoration work may be required on the original photo if you want marks etc removed.

Please refer to the details on page 13 for costs involved.

Prints from oversize originals, or non standard negatives may also incur additional charges as per this price list.

\*Printed off-site - 10-14 day service time



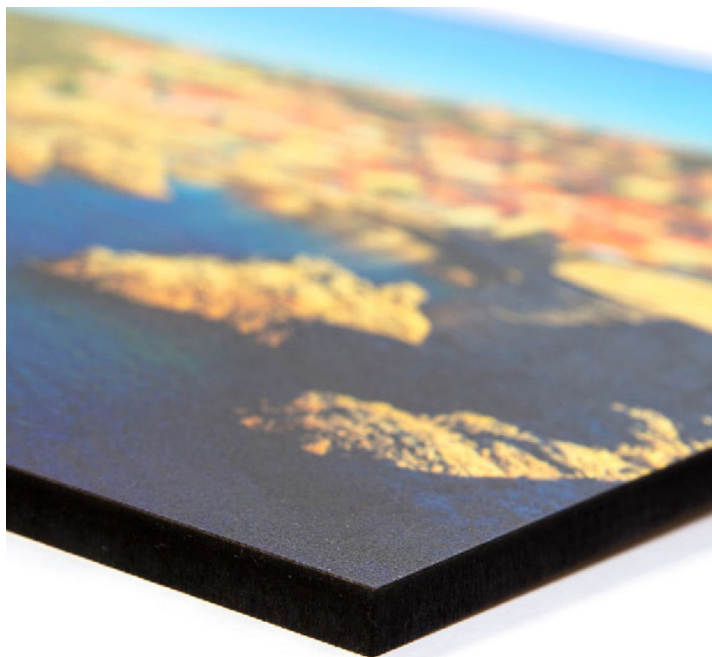
## LAMINATING AND MOUNTING

We offer a full range of laminating and mounting services to suit all needs.

### Mounting – 10-20 Day Service

Size Inches	Size Metric cm	White Foamcore	Laminating Gloss/Matt	9mm MDF*	
4x6/5x7	10x15/13x18	\$6.00	\$6.00	\$23.00	
6x8	15x20	\$6.00	\$6.00	\$30.00	
8x10/8x12	20x25/20x30	\$10.00	\$10.00	\$38.00	
11x14	28x35	\$16.00	\$18.00	\$43.00	
12x16/12x18	30x40/30x45	\$22.00	\$23.00	\$48.00	
16x20/16x24	40x50/40x60	\$38.00	\$39.00	\$53.00	
20x20	50x50	\$38.00	\$39.00	\$57.00	
20x24	50x60	\$43.00	\$45.00	\$69.00	
20x30	60x75	\$48.00	\$50.00	\$79.00	
24x36	60x90	\$62.00	\$68.00	\$95.00	
30x40	75x100	\$82.00	\$90.00	\$130.00	
40x50	100x130	\$120.00	\$130.00	\$160.00	
40x80	100x200	\$165.00	\$175.00	\$200.00	
50x60	130x150	\$170.00	\$180.00	\$230.00	

\*Price is for square edges, for bevelled edges add 50%



## **PASSPORT PHOTOS**

Australian Passport Photos	\$20.00 (Digital File \$10 Extra)
All International Passports/Visas	\$25.00 (Digital File \$10 Extra)
Digital File only of Passport Photo	\$20.00 Australian/\$25 International
Passports of children under 18 months	\$25.00

**Passport photos are available in-store from 9.30am to 4pm,  
Mondays to Friday, and 9.30am to noon on Saturdays.**

## **PHOTO BOOKS**

### **On Line, Home Order Photo Books**

10 page, double sided Photo Book	\$44.95
Additional pages (up to 20 pages)	\$1.50 each

These can be ordered through our [huttstreetphotos.com.au](http://huttstreetphotos.com.au) website and will be ready within 24 hours

## **CUSTOM SERVICES**

### **Photo Mugs**

Photos printed onto a standard ceramic photo mug. These should be ordered on our website.	\$24.95 each
---	--------------

## **COLLAGE PRINTS (8X10"/20X25CM) AND LARGER.**

Please see our website for our collage options.



## BULK PRINT (SHOEBOX) SCANNING SERVICES

This service is ONLY for bulk (50+) quantities of photos, and there are CONDITIONS for this service.

Photos for bulk scanning orders must be un-mounted, not torn or bent, no smaller than wallet size (2" x 3") or larger than 8" x 12" or A4.

Mounted prints, instant prints or non standard size photos can be scanned but will be charged at the individual scan prices shown on page 11.

Please remove photos from album pages, cards etc. If you want to help to keep groups of photographs together, you may want to put an index card at the beginning of each group with some information on it and we'll scan it along with the photos.

We have 2 Shoebox Scanning options available.

### Standard Scanning Service

\$70 first 200, \$35 per additional 100 photos

300dpi resolution scans, all prints scanned in landscape mode

Files supplied on standard disc

Manual Scans \$3.50 each

Optional Slide Show (at extra cost) – see page 23

Optional 600 dpi scans +50%

Optional 1200 dpi scans +100%

**Technical specifications:** Our standard scanning resolution for this service is 300 dpi. This is adequate for making good copies the same size or up to twice the size of the original photo.

As an **additional option**, your photos can be scanned at 600 dpi. This makes image files that are 4 times bigger, so the files take up more space on your computer's hard drive or on Disc. Add 50% to the total of the order for 600 dpi scanning.

### Premium Scanning Service

\$100 first 200, \$40 per additional 100 photos

600dpi scan resolution, all files rotated

Auto colour enhancement

Files supplied on Archival Disc and case supplied

Manual Scans \$4.50 each

Optional Slide Show (at extra cost) – see page 23

Optional 1200 dpi scans +100%

**1200 dpi** scanning is also available at 100% extra cost, as are .tif files at 50% extra.

**Double sided** scanning is available in both services at 50% extra.

Setting up separate **folders** for groups/packs of photos is 30% extra for both services.

Mounted or damaged photos, photos larger or smaller than the sizes above will be charged at the normal manual scanning rates as shown on page 11.

If photos are supplied in albums, or if photos are glued to pages, the manual scan price, per photo, will apply.



## DVD SLIDESHOWS

The simple act of putting your digital files onto a DVD will not guarantee that the photos will play on a DVD player – it might, it might not – and if it does, the vertical images may not be the correct way up. Different brands of DVD players have different software, and different ways of displaying images.

The one way we have found that we know will work on all DVD players is that we convert the digital images (photos, slides or digital files) into a video slideshow, and it will then play as a movie on the DVD player.

When we do this, we also rotate all images so they are correctly orientated on the screen. Our standard settings are a 3 second transition, and 10 seconds for the image, but this can be changed on request. You can also “speed up” or “slow down” the slideshow using the fast forward or rewind buttons on the remote control, or stop it on a photo using the pause button.

If the slideshow is required in a different format such as avi, quicktime, mp4 etc please ask for details before we create the slideshow.

MP4 files are the standard we use when putting slideshows onto USB drives, but .avi files can be supplied.

If you already have a DVD slideshow, it will need to be converted as per costs on page 28.

1 to 100 files	\$70.00	
Per each additional 100 images	\$50.00	up to 999 photos (Max)

Minimum charge on all scans \$6. Duplicate disc \$10

## Some information on film and video transfer

Today's television systems show an amazingly sharp image, but the copies we make of your old films and video tapes can only be as sharp as the way they were taken. The sentimental values, the memories evoked, may be wonderful - but at best the images will look just the way they would have looked on your home projector. Or on a low resolution TV set.

That's assuming your tapes or movies are in perfect condition. Dirt and mould accumulate on movies over the years. Film shrinks and expands a little, and the movies don't run as smoothly as they did.

***Old movies were rarely perfectly exposed.*** Movie film was not very sensitive to light, and in the "good old days" - the original Kodachrome film was only ASA 10. That's why your dad had to use those blinding lights to take Christmas morning movies. Unless the original movie maker had great skills, old movies will have portions that look too light, too dark, too shaky or even blank in spots. It's just the nature of the beast. They are still irreplaceable memories.

At ***their very best***, home videos had about 1/4 the resolving power of your digital camera or phone. If you recorded at any speed other than SP, to squeeze more than 3 hours out of an E-180 VHS tape, the quality was much worse. That was true at the time of recording, at the time when the tapes were the best they were ever going to be.

***Time makes things worse.*** Tapes stretch, magnetic signals get weaker.

We'll do a good job, but we're not miracle workers.



## MOVIE FILMS TO DVD or USB/PHD

**Please remember, the quality of the finished DVD will be dependent on the quality of the original movies.**

Rolls will be burned onto Archival DVD's. Portable hard drives can also be supplied if required.

The film transfer equipment for our 8mm is a custom made telecine built by a television engineer with over 40 years of experience with broadcast television and film transfers. Films can be transferred at sound speed (25frames/sec) or the more usual 16-18 frame/sec used for home movies. In actual fact the films are transferred at 16 2/3 frames per second (for technical reasons) and locked in synchronisation with the camera which eliminates any flicker whatsoever. The light source is a high intensity LED light that has no heat so there can be no damage to the film if it stops in the gate. It also ensures a completely flat even light source with no "hot" spots that occur when using a projector (and results in poor quality transfers). Sound is captured in real time (unlike some systems) and can be captured from Super 8mm AND Standard 8mm film if it has sound. The sound pickup is uniquely designed to eliminate totally any of the clicking type sprocket noise that could often occur with projectors. The film frame is focussed upon directly in the gate so there are no intermediate optics or mirrors or screen used. The film is NOT projected onto anything. This gives the sharpest possible image free of any distortion. Films at 25frames/sec are of course scanned frame by frame but if home movies at the silent speed are scanned at that rate then they would be 50% too fast and everyone would be running round like an old silent comedy. This means if the films are transferred frame by frame but it has not been shot at 25 frames/sec, the captured movies must then be slowed down electronically afterwards. This is time consuming, costly and gains nothing. By transferring silent speed home movies at the correct speed in the first place, a complete conversion process is eliminated and the films run at the correct speed. Colour correction includes gamma (mid tone) control which helps bring out the detail in darker areas - this is lost if no gamma correction is used.



Service time on this service is approx 4-6 weeks. MP4 Conversion \$15 per DVD transferred.

### 16mm and 35mm Movie Film Transfer to DVD

16mm and 35mm are transferred on a former broadcast machine - a Rank Cintel Mark 3 Flying Spot Scanner. Formally used at one of Adelaide's TV stations it provides excellent quality. Both magnetic and optical sound can be captured for 16mm and optical for 35mm.

All 16mm and 35mm Movie scans are supplied on archival media or flashdrive.

### 9.5mm Pathe film

\$90 min charge

50ft reel – 2 or more rolls \$75 each

400ft reel – \$130 per reel.

**Please note copyright films will NOT be copied**

# Movie film transfer

**Combined and  
copied to Disc in  
random or  
specified order.**

**Each reel, copied  
to USB as  
individual files, per  
reel**

	<b>Per reel</b>	
super 8/standard 8 50ft	\$65	\$75
super 8/standard 8 100ft	\$75	\$80
super 8/standard 8 200ft	\$85	\$90
super 8/standard 8 400ft	\$135	\$140
super 8/standard 8 800ft	\$175	\$180
16mm 50ft	\$90	\$95
16mm 200ft	\$120	\$125
16mm 400ft	\$155	\$165
16mm 800ft	\$180	\$190
16mm 1200ft	\$225	\$235
16mm 1600ft	\$265	\$275
16mm 2000ft	\$320	\$330

If a USB is needed of the combined files, a one off fee of \$10, plus the cost of the USB applies.



8mm



Super 8



16mm



## VIDEO TAPE TO DVD

VHS, VHS-C, 8mm, Hi8, Digital8 and Mini DV tapes can be transferred to DVD

Pricing as follows:

VHS/Video8/8MM/MiniDV/VHS-C to DVD more	\$30 each or \$25 for 15 or more
Beta/Super VHS (SVHS) to DVD	\$60 each
HD MiniDV Tape to DVD (Min \$45)	\$55 each
Sony U-Matic Tape to DVD (Min \$65)	By Quote
Copy DVD	\$10 each



Archival DVD's can be supplied at an additional \$10 per DVD

US Standard NTSC VHS to DVD	\$50 per tape
European Standard SECAM VHS to DVD	NLA



Maximum copy time to a DVD is 3 hours.

**Please note that copyright films/tapes and recorded movies from TV or TV shows will NOT be copied.**

Video Tape repairs: VHS \$30 each, all others, \$45 each

Video to MP4 file format \$10 extra per tape, plus cost of USB drive, if not supplied.

## STILL IMAGES FROM MOVIE FILMS, VIDEO TAPE or DVD

We also offer a service of still photos from movies.

All media HAS to be either a digital movie file, or be converted to a digital file.

Movie films and video tapes need to be converted to DVD as per the pricing above or on the previous page.

Print quality from any movie source will be “adequate” for 4” x 6” photos, and we would be hesitant to offer sizes larger than this.

Pricing is per 4” x 6” (10cm x 15cm) photo \$20.00

Photo file burned to disc \$6.00 per file

Very specific instructions need to be provided about which section you want a photo from, such as time from start of movie, speech, particular movement of a person etc.

We will do our best to get the photo you request

Please call if you need more information

## **MOVIES FROM MEMORY CARDS, MINI dvd'S AND OTHER MEDIA**

Movie files on memory cards cannot be simply copied to a DVD to play on a DVD player – they need to be “authored” to a DVD so that the correct formatting is transferred.

We can take movies from memory cards and author them onto DVD to play on your Television or Computer. We can also take them from Mini DVD or other media, and author them to a DVD. Final file format is commercial .vob format which will play on all DVD players, along with most computers, although you may need to download codecs or plugins for some programs to play them.

There is a minimum charge of \$90 which includes the first 30 mins of movies, and then \$70 per half hour of movie time (or part thereof) applies.

DVD copies are \$10 each. Service time on this service is 20-30 working days and we will quote you a price for the job before we proceed.

## **VIDEO FILE CONVERSION**

Video files on DVD can be converted to different formats for additional uses.

If the video is required on a USB drive, the standard DVD video format will not work reliably, so we will need to convert the file to an .avi or mp4 format.

The conversion fee for this service is \$30 per DVD plus the cost of the USB drive, unless it is supplied.

## **VINYL LP'S TO CD/USB**

We can transfer old vinyl LP's to CD.

Min Price is \$35/side or both sides for \$45.

## **AUDIO CASSETTES TO CD/USB**

Standard Audio Cassettes to CD

\$35.00 per side or \$40 for both sides

## **REEL TO REEL TAPE**

Reel to reel audio tapes can be transferred to CD. Note that recording times may vary depending on the original tape (2 track or 4 track).

Prices on application.

## **EKTACHROME E4, KODACHROME K12 OR K14 FILMS**

This film can no longer be processed into a colour image as the processing chemistry has been discontinued by Kodak worldwide. These films are now well outside their expiry dates and the results are getting worse with time. We no longer offer a processing service for these films.

If you want to have it processed, you should contact Film Rescue International, P.O Box 428, 500 Grand Ave., Indian Head, Saskatchewan, S0G 2K0, Canada  
<https://www.filmrescue.com/>

