



March 2022

STEAMING AHEAD IN 2022



Removing a 'charge' from Northpine's new steamer on site at the Waipu sawmill.

Let's start with some very good news! Northpine has installed a new steamer on site at Waipu. This helps to improve the availability of our range of large-dimension, long-length square posts known as Northbeam. Steaming is much better than conventional kiln-drying for big timber. Having the steamer on site not only makes production more efficient, it reduces our carbon footprint by keeping some trucks off the road, so **everyone's a winner** here. Our thanks go to BDX, United Civil Construction and all the other contractors involved in completing this major investment in our future.

SO DEMANDING !!

Demand crisis or supply crisis? Whatever it is, demand for structural timber is unrelenting. Most mills are just servicing their “traditional” loyal customers as they have no additional stock for “casuals”; Northpine is no different. H1.2 and H3.2 KD are very scarce in all sizes and everything else is hand-to-mouth. Northbeam products are not immune to this current economic environment. Demand for H5 treated 50mm product has more than trebled, placing significant pressure on production resources; increases in the number and size of projects around the country using Northbeam mean that our supply chain has stretched out and stock is now ordered well before it is produced.

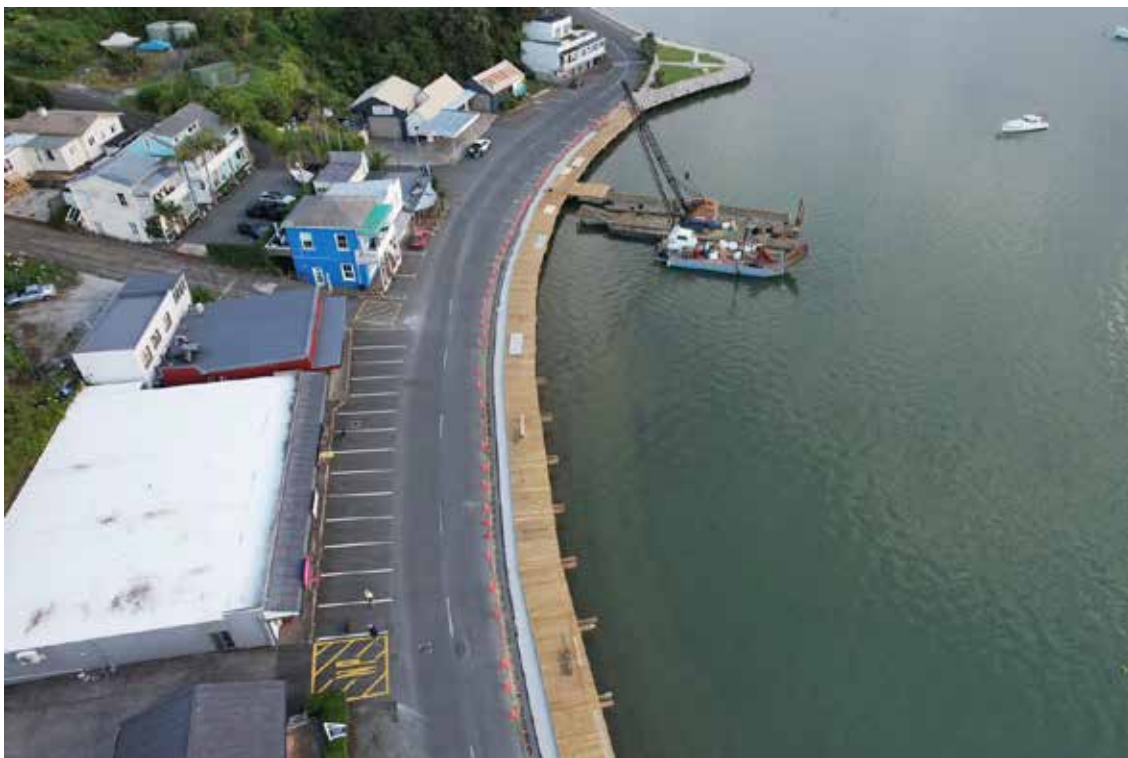
Our advice to all merchants and all builders.
Order as early as you can, to minimise wait times.

They're using Northbeam here!



The Centreway Bridge, due to be completed this month

The Centreway Bridge (called Rainbow Bridge by students) crosses the estuary between Orewa College and Centreway Reserve. The new 100m long, 1.6m wide boardwalk will soon be used as access by students to Orewa College. Successful tenderer Bridge It NZ are most of the way through construction of the boardwalk and bridge, reusing the majority of piles and replacing the superstructure. Northpine is supplying Northbeam for all the superstructure timber. Bridge It NZ manager Kim Bevins says they expect to have the improvements completed for client Auckland Council by the end of March.



Mangonui Waterfront is nearing completion by United Civil Construction

MANGONUI WATERFRONT, NORTHLAND

Despite the challenges of heavy demand, short supply and the onset of Omicron since mid-February, steady progress has been made through Spring and Summer on the redevelopment of Mangonui Waterfront. The \$10M+ project for Far North Holdings Ltd includes a new timber boardwalk, jetty, swim steps and pontoon construction and jetty. Construction is in the very capable hands of United Civil Construction.



Watch our video explaining the many benefits of Northbeam, our specialist range of large dimension beams and square posts.

Choosing SG10 helps with Building Code changes

Changes to section H1 of the NZ Building Code are due to become mandatory in November 2022. For residential housing the changes include Floor insulation, Wall insulation and Roof insulation as follows:

TABLE 2.1.2.2B: Minimum construction R-values for building elements that do not contain embedded heating systems

Paragraph 2.1.2.2 b), 2.1.3.1

Building element	Construction R-values (m ² ·K/W) ⁽¹⁾					
	Climate zone 1	Climate zone 2	Climate zone 3	Climate zone 4	Climate zone 5	Climate zone 6
Roof ⁽²⁾	R6.6	R6.6	R6.6	R6.6	R6.6	R6.6
Wall	R2.0	R2.0	R2.0	R2.0	R2.0	R2.0
Floor						
Slab-on-ground floors	R1.5	R1.5	R1.5	R1.5	R1.6	R1.7
Floors other than slab-on-ground	R2.5	R2.5	R2.5	R2.8	R3.0	R3.0
Windows and doors ⁽³⁾	R0.46 ⁽³⁾	R0.46 ⁽³⁾	R0.46	R0.46	R0.50	R0.50
Skylights	R0.46	R0.46	R0.54	R0.54	R0.62	R0.62

Notes:

(1) Climate zone boundaries are shown in [Appendix C](#).

(2) In roofs with a roof space, where the insulation is installed over a horizontal ceiling, the roof R-value may be reduced to R3.3 for a distance of up to 500 mm from the outer edge of the ceiling perimeter where space restrictions do not allow the full-thickness of insulation to be installed.

(3) For building consent applications submitted before 2 November 2023, the minimum construction R-values for windows and doors in climate zones 1 and 2 are permitted to be reduced to R0.37 m²·K/W.

Designers and builders can reduce the number of studs in walls and rafters for skillion roofs by using SG10 in place of SG8 to greatly reduce the thermal bridging to improve the overall R-value. This is yet another reason to design and build with SG10 in mind.

You can download Northpine's very helpful Span Tables Booklet [here](#) and watch a short Span Tables video below.

Bearers - 3 kPa floor loads

Maximum span of bearer continuous over 2 or more spans (m)	Loaded dimension* of bearer (m)		Bearer size (width x thickness) (mm x mm)	
	SG8	SG10	SG8	SG10
1.30	1.0	1.4	90 x 90	90 x 90
	1.9	2.6	140 x 70	140 x 70
	2.5	3.6	140 x 90	140 x 90
	3.6	5.1	190 x 70	190 x 70
1.65	1.2	1.7	140 x 70	140 x 70
	1.5	2.2	140 x 90	140 x 90
	2.2	3.2	190 x 70	190 x 70
2.00	1.0	1.5	140 x 90	140 x 90
	1.5	2.1	190 x 70	190 x 70

Refer NZS3604:2011 Tables A4.4 and A14.4
* For definition of loaded dimension see 1.3. NOTE - Members 90 mm thick may be substituted with built-up members sized and nailed in accordance with 2.4.4.7.

3 kPa Span Tables now available online

Northpine's 3 kPa Span Tables, which combine and compare SG8/SG10 data from NZS3604:2011, are available free online.

Designers and architects who need to consider 3 kPa floor loads generally go straight to an engineer for help.

There are several situations where a building will require a 3 kPa floor load. It is a minimum for commercial floors. Buildings such as schools and other public facilities generally require this load capacity or greater.

Timber framed commercial buildings are fast becoming the new design trend. Designers who fully appreciate the advantages of SG10 over SG8 realise they

don't need to go to the more expensive 'engineered timber' option straight away. SG10 is not always the best solution but, when it is, it certainly makes good economic sense. Northpine's range of 'big timber' called Northbeam can solve some design problems.

[Click here to see 3 kPa Span Tables](#)



NORTHBEAM

A product range of Northpine

www.northpine.co.nz

34 Cove Road, Waipu, Northland NZ

Copyright © 2022 Northpine, All rights reserved. [update your preferences](#) or [unsubscribe from this list](#).



mailchimp

Want to change how you receive these emails?
You can