

DCF/ CTF / KTF Filter wear parts



Doctors, cleaning discs and drive nuts

New and spare doctors, cleaning discs that will fit Ronningen-Petter® DCF, MCF and our CTF/KTF mechanically cleaned filter units. Drive nuts that will fit the DCF-2000 filter units.

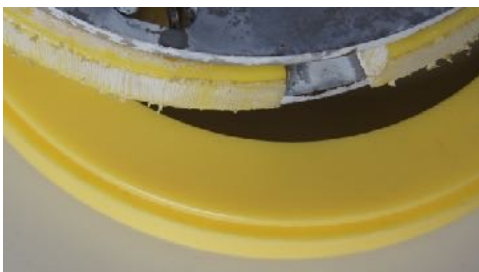
Kapotek can provide a wide range of different materials, depending on the liquid filtered, wear conditions, temperature and chemical compatibility.

Mechanically cleaned filter – plastic wear parts

From time to time it is recommended to inspect the condition of your filters cleaning discs and drive nut conditions.

Here is what to check for:

- Does the dP go up in your filter, does the filter plug regularly?
- Check if the cleaning disc is worn, see pictures of worn discs
- Do you get proximity switch failures?
- Check if the drive nut of the DCF-2000 filter is worn, see pictures
- If the drive shaft is worn the edges of the threads will be sharp or if you put a new drive nut on the shaft and the nut sill sits not firmly.
- For rebuild and repair instructions, ask us
- If you have excessive wear, call us for better material options, we have several available
- Call us for help if needed, we are happy to help!



New vs. worn



Examples for worn parts



Check if the drive nut sits firmly on the drive shaft



If the pins are reaching the ends- the disc is worn, see the gap between the dic and the screen

Model	Material	Options
Drive nut DCF-2000	PE, POM	Temp. range and wear
Cleaning disc	Delrin, POM, PUR, PE, PTFE	Specify filter and specs
Special design disc	Special composite	Specify filter and spe