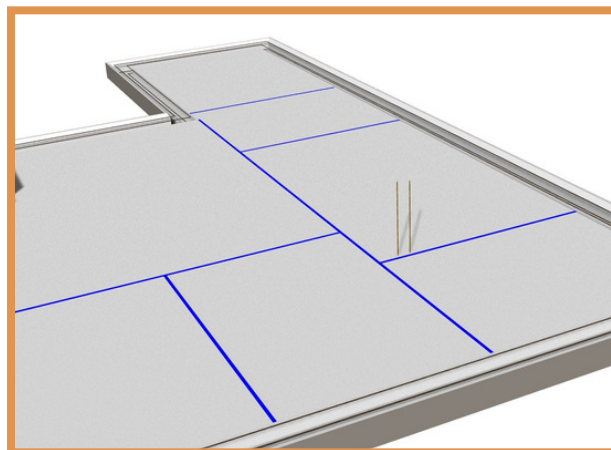
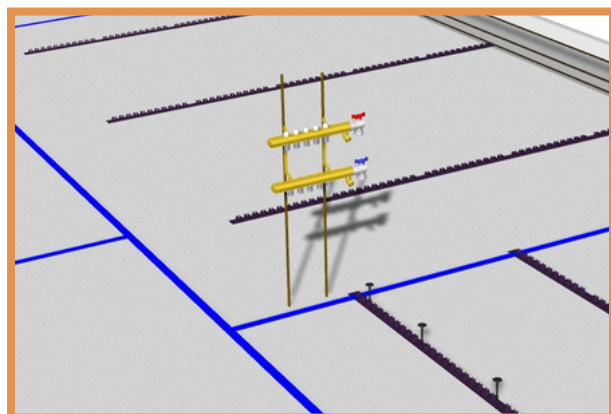


Start by measuring and drawing out the walls on the styrofoam.



Fasten the distributor to rebar, the lower distributor approx. 800mm above the finished floor. Then lay out the rails according to the drawing. Complete with black 90mm plastic nails in the rail to make it stick better.



Cut the pipes from the correct roll. See picture for example all B out of the same roll.

All pipes are meter marked and each loop has 7m extra length.


REV.	Datum
4 1/4	B
5 1/4	C
5 1/4	C
5 1/4	C
4	C
4	B
4	B
3	B
3 1/2	A

SLINGA 18 rör=59m	SLINGA 17 rör=73m	SLINGA 16 rör=72m	SLINGA 15 rör=56m	SLINGA 14 rör=56m	SLINGA 13 rör=55m	SLINGA 12 rör=30m	SLINGA 11 rör=40m
-------------------	-------------------	-------------------	-------------------	-------------------	-------------------	-------------------	-------------------

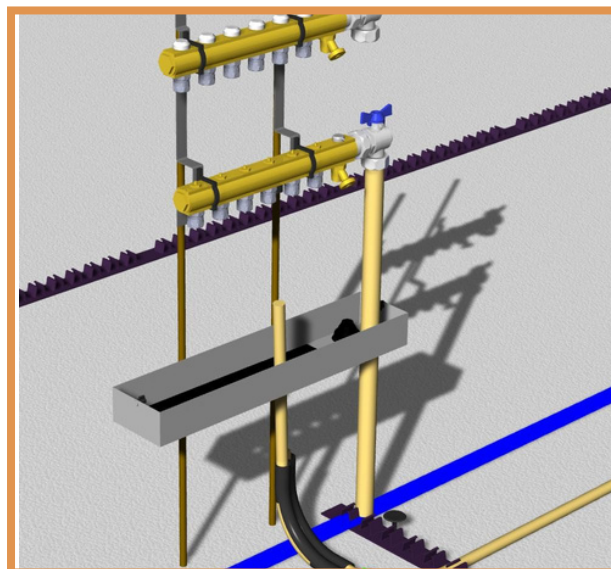
  

Instyrningsvärde för	
Energijägar 200m LADA	
Energijägar 40m LADA	
Benämning	Art

Lövängsvägen 13, 194 45 UPPLANDS VÄSBY, Tel: 010 - 130 6900  
www.eodab.se

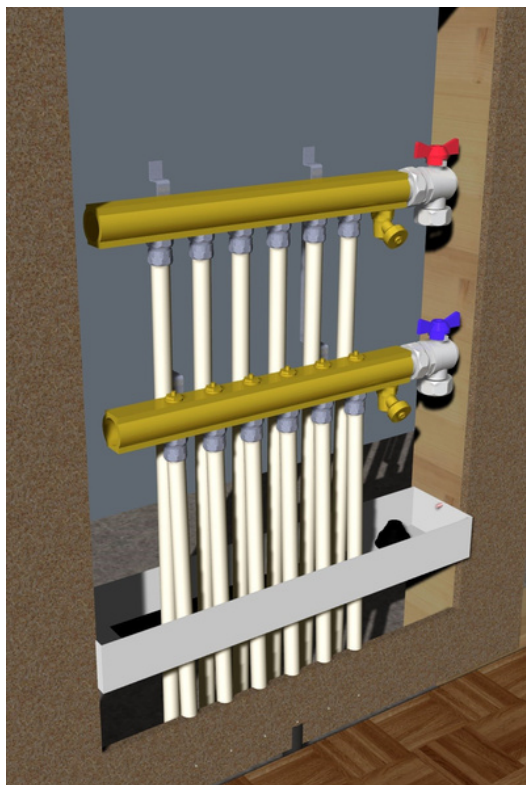
Start by attaching black plastic bend, then attach the pipe in the upper distributor. Then unroll the loop and finally attach it to the lower distributor. Feel free to put "pipe nails" in the turns.



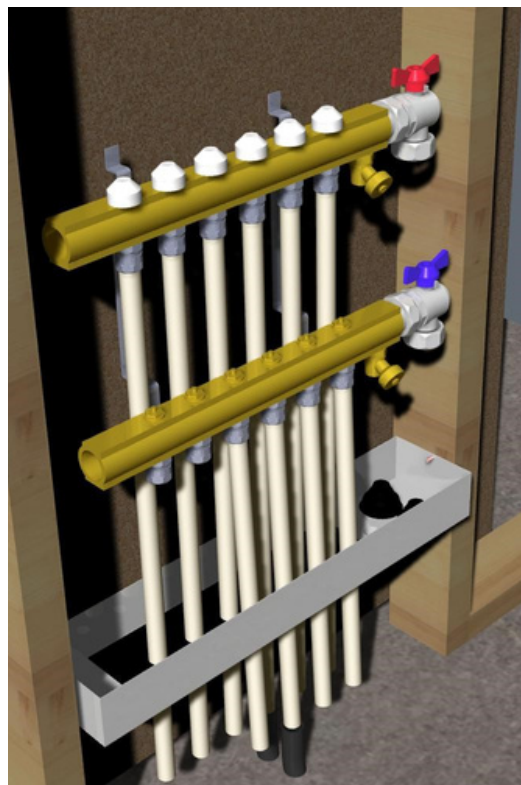
Don't forget the drainage box

## IMPORTANT

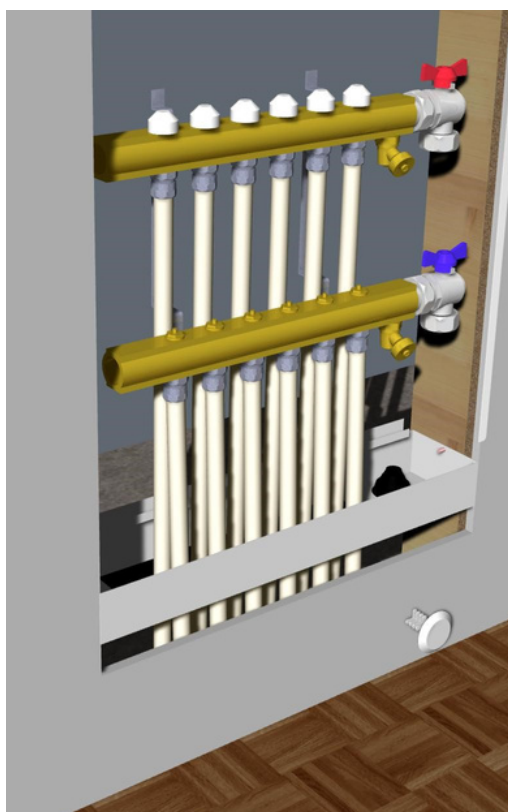
CAREFULLY MARK ALL THE LOOPS WITH THE ATTACHED PEN. Install any supply pipes.



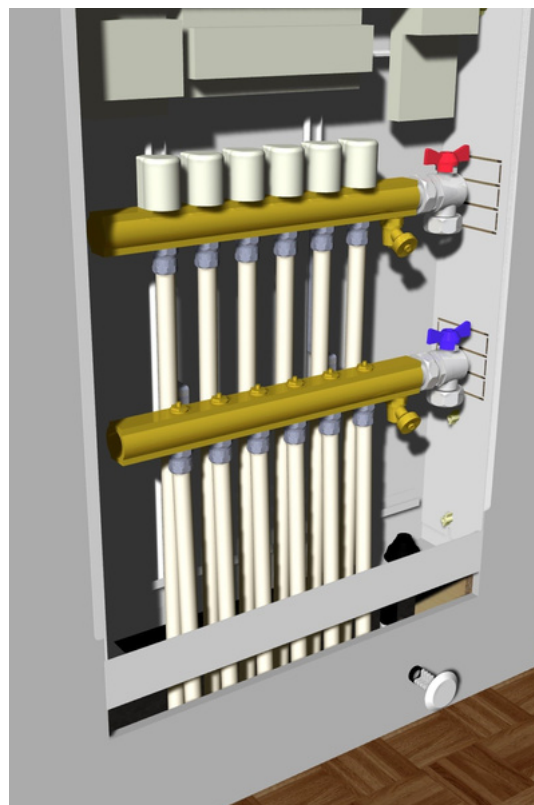
**Put up the studs**



**Mount chipboard**



**Install drywall**



**Finally mount the cabinet**