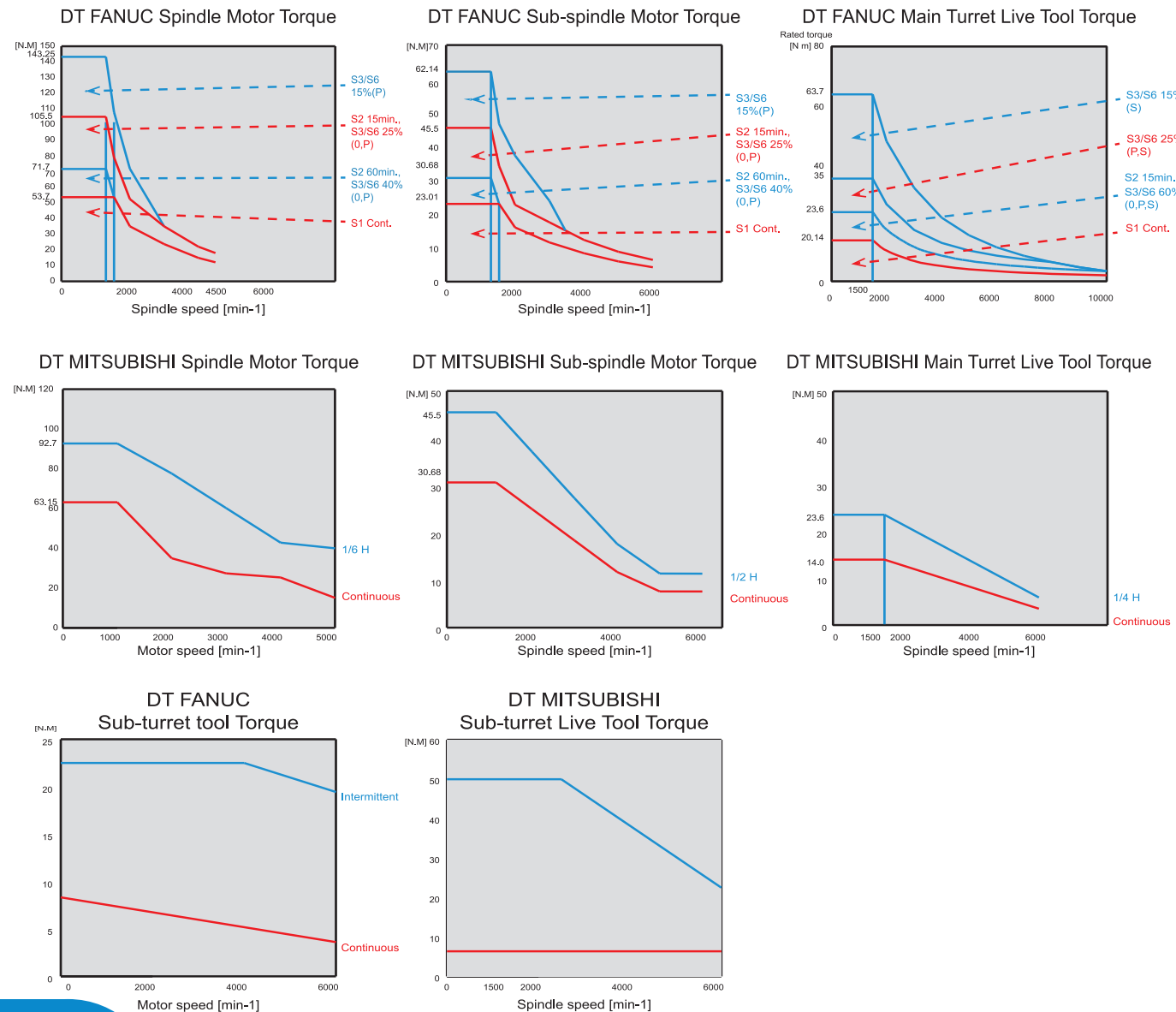
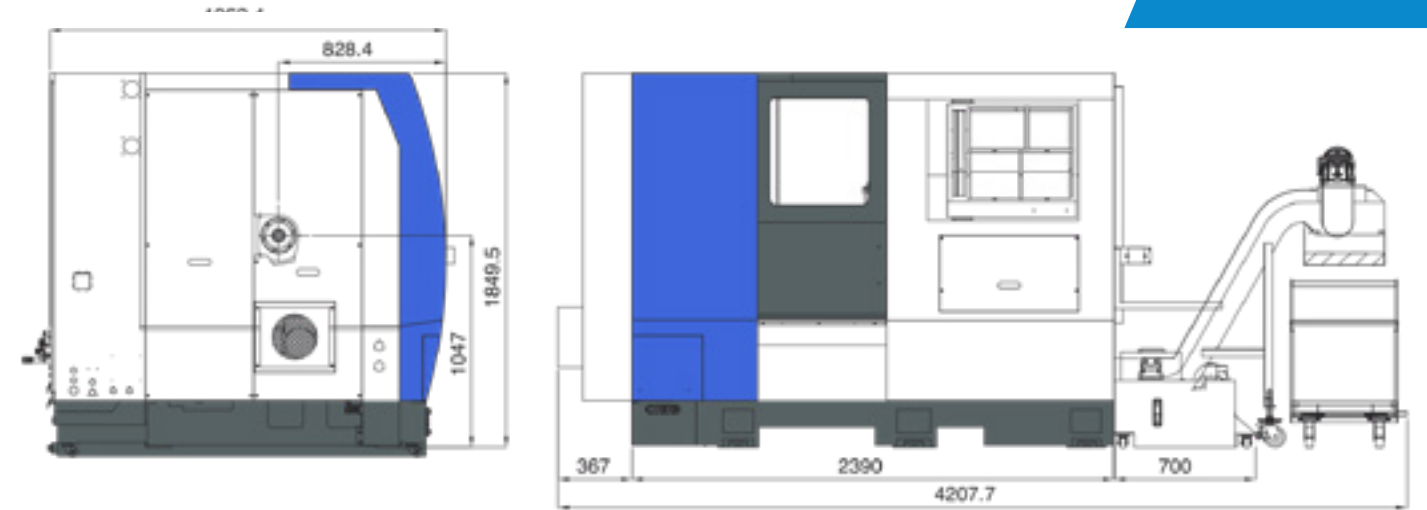
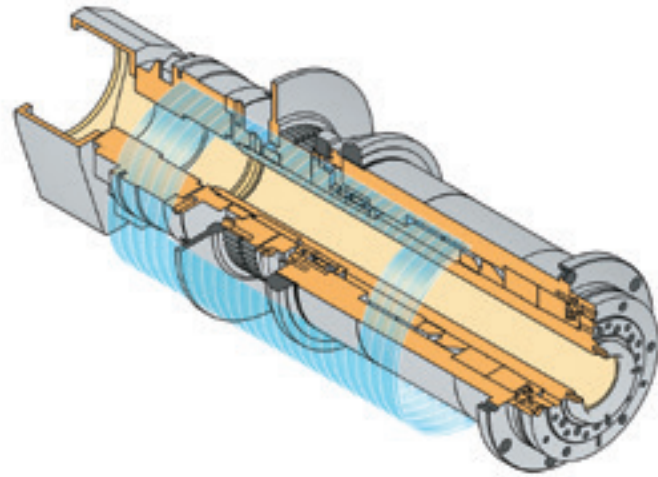
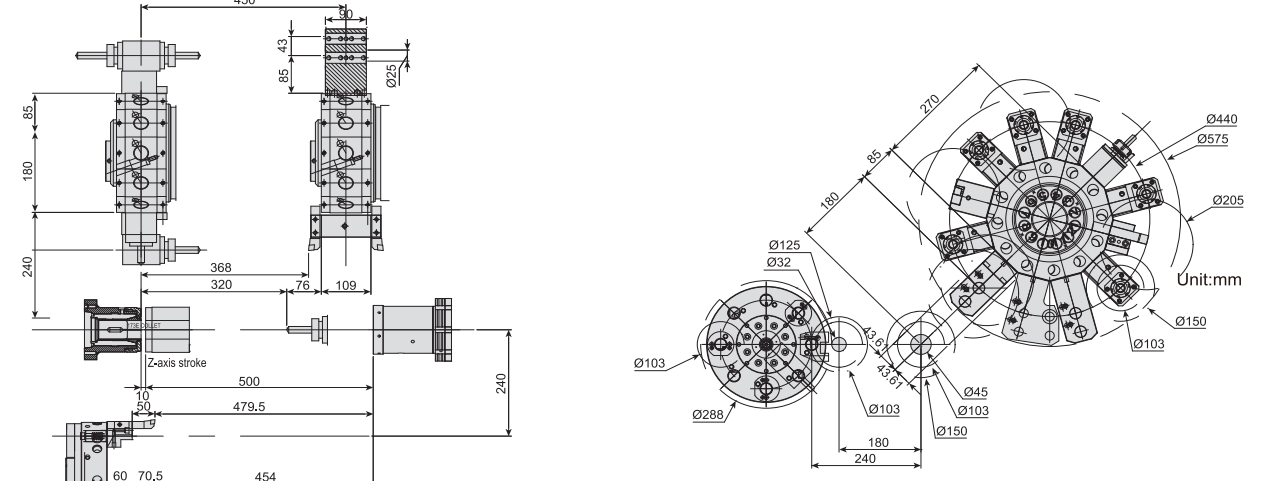


- Extremely rigid main and sub-spindles with purpose built roller bearings on the front and rear to concentrate power directly to the cutting surface and resist axial and radial forces.
- Higher speeds and heavy-cuts are possible with this bearing arrangement.
- Simultaneous independent machining of the front and back of the workpiece and C-axis with resolution of 0.001 degrees allows for complex contouring of parts.

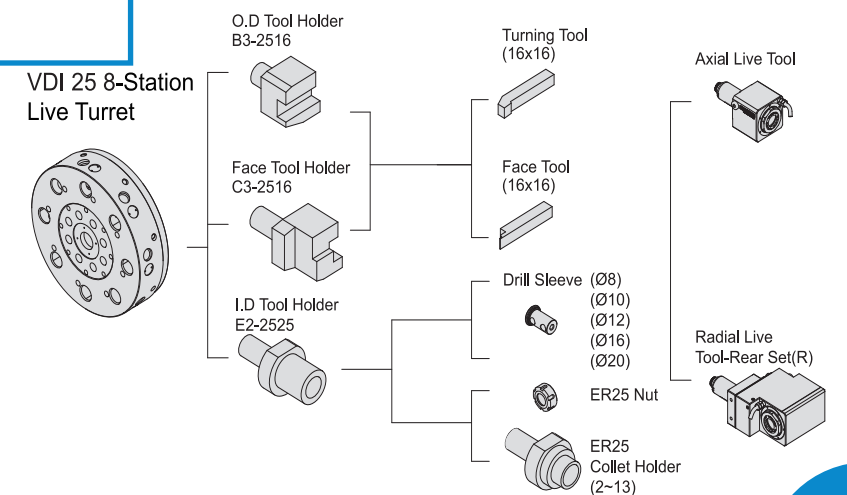


Machining Zone

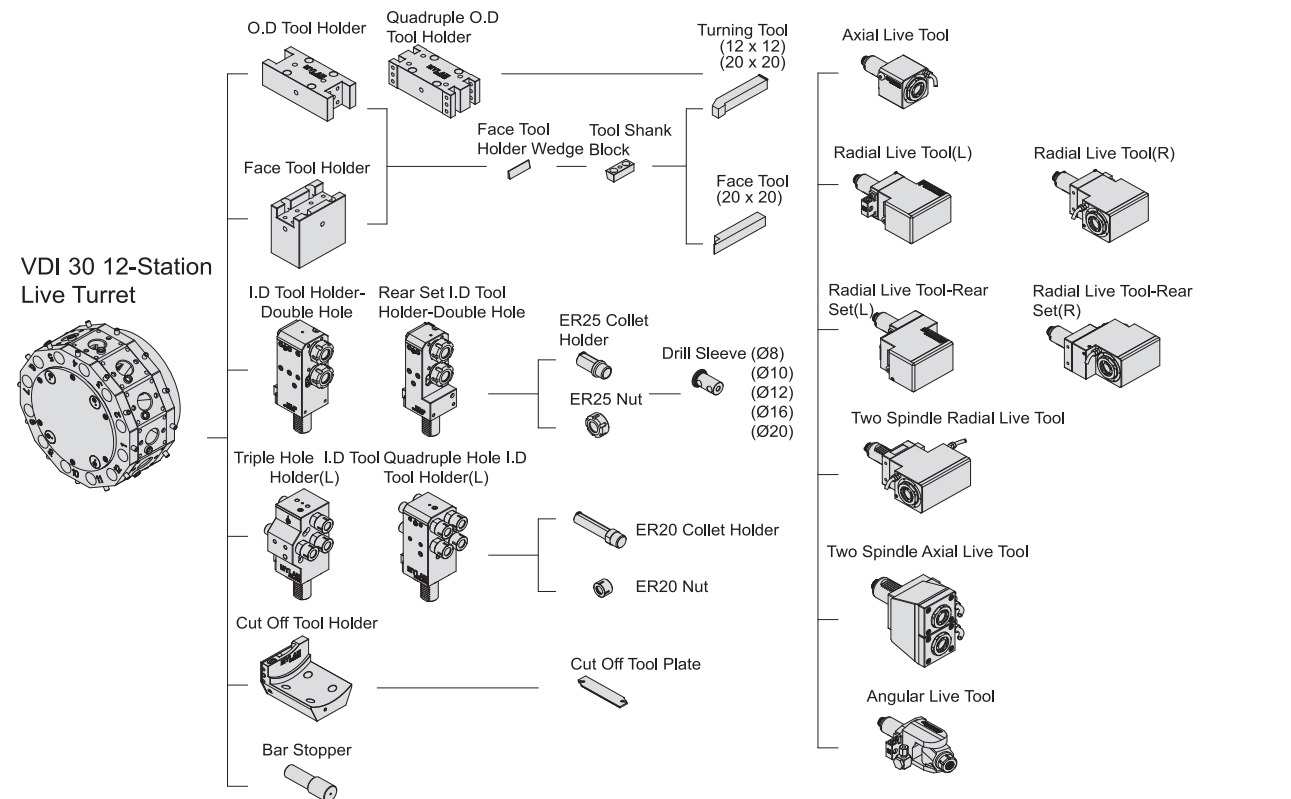
Tool Interference



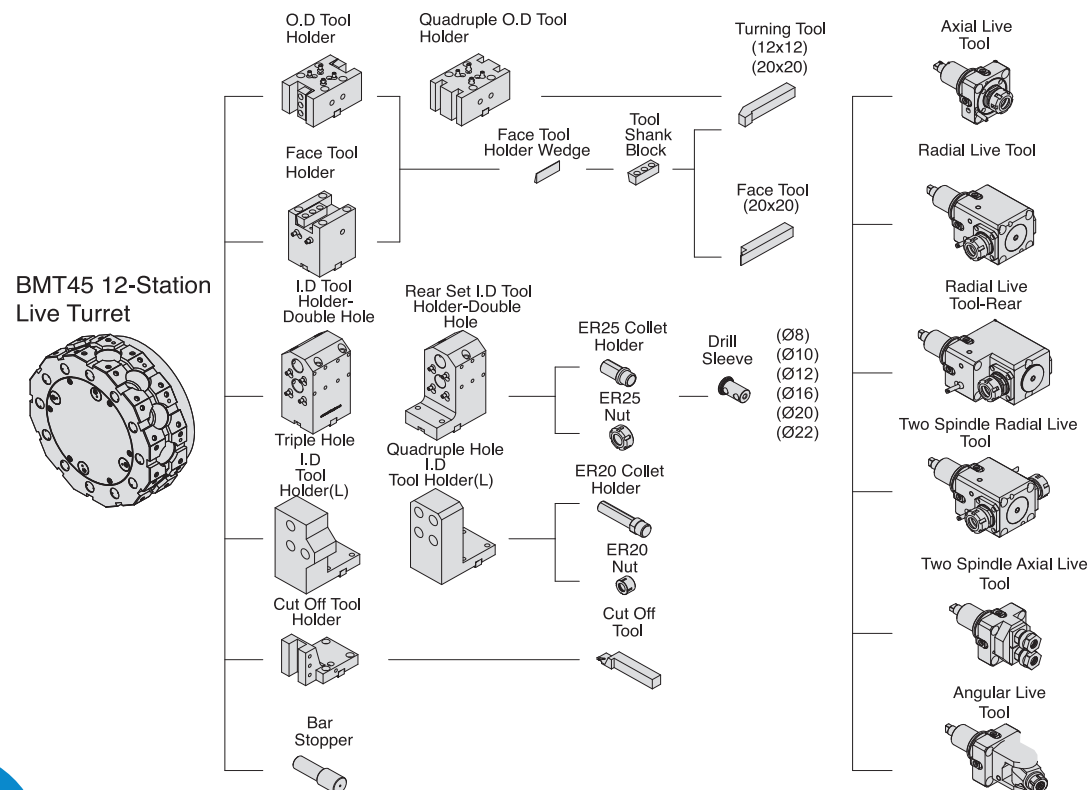
VDI 25 8-Station Live Turret



VDI 30.12 Tooling System



BMT45. 12 Tooling System



Specifications

Item	Unit	42DT	52DT	42DY/52DT
		Main Spindle	Main Spindle	Sub-spindle
Capacity				
Swing Over Saddle	mm	260	260	-
Chuck Type	mm	DIN173E	DIN173E	DIN171E
Max. Bar Turning Length	mm	135	150	60
Max. Turning Length	mm	350	350	-
Max. Turning	mm	150	150	135
Max. Turning Bar Diameter	mm	ø42	ø50	ø32
Travel				
X1 / X2 Axis Travel	mm	175(X1)	175(X1)	240(X2)
Z1 / Z2 Axis Travel	mm	450 (Z1)	450 (Z1)	500(Z12)
Y1 Axis Travel	mm	±35	±35	-
X1 / X2 Axis Rapid Traverse	mm/min	18(X1)	18(X1)	18(X2)
Z1 / Z2 Axis Rapid Traverse	mm/min	24 (Z1)	24 (Z1)	24 (Z2)
Y1 Axis Rapid Traverse	mm/min	18	18	-
Spindle				
Spindle Nose	type	A2-5	A2-6	A2-4
Hole Through	mm	56	79	48
Spindle Speed	rpm	50 - 5000	50 - 4500	50 - 5000
Spindle Motor Type	type	β8 / 12000i	β8 / 12000i	β3 / 10000i
Spindle Motor (Cont./30min Torque)	kW	7.5/11	7.5/11	3.7/5.5
Turret				
No. of Tool Stations	set	12	12	-
O.D. Tool Size	mm	20	20	-
I.D. of Boring Bar Holder	mm	25	25	-
Turret Indexing	sec	0.1 - 0.3	0.1 - 0.3	-
Tool Spindle Speed	rpm	6000	6000	-
Tool Spindle Motor Type	type	α2 / 10000i	α2 / 10000i	-
Tool Spindle Motor (Cont./30mins)	kW	2.2/3.7	2.2/3.7	-
Tool Spindle Torque (Cont./30mins)	mm	14 / 23.5	14 / 23.5	-
Drill Capacity	mm	ø13	ø13	-
Endmill Capacity	mm	ø13	ø13	-
Tap Capacity	mm	M8	M8	-
Sub-Turret				
No. of Tool Stations	set	-	-	8
OD. Tool Size	mm	-	-	20
I.D. of Boring Bar Holder	mm	-	-	20
Turret Indexing	sec	-	-	0.1-0.3
Tool Spindle Speed	rpm	-	-	6000
Tool Spindle Motor Type	type	-	-	α8 / 6000i
Tool Spindle Motor (Cont./30mins)	kW	-	-	2.2
Tool Spindle Torque (Cont./30mins)	Nm	-	-	22
Drill Capacity	mm	-	-	ø13
Endmill Capacity	mm	-	-	ø13
Tap Capacity	mm	-	-	M8
Motor Power				
X1 /X2 Servo Motor	kW	1.8	1.8	1.2
Z1 / Z2 Servo Motor	kW	1.8	1.8	1.8
Y1 /Y2 Servo Motor	kW	1.8	1.8	-
Turret Servo Motor	kW	0.75	0.75	0.75
Coolant Pump	kW	0.9	0.9	0.9
High Pressure Cutting Fluid Pump	kW	0.4	0.4	-
Hydraulic Pump	kW	3.75	3.75	-
Parts Conveyor Motor	kW	0.03	0.03	-
Chip Conveyor Motor	kW	0.2	0.2	-
Lubrication Pump	kW	0.003	0.003	-
Oil Mist Collector	kW	0.75	0.75	-
Tank Capacity				
Hydraulic Capacity	Liter	55	55	-
Lubrication Tank Capacity	Liter	2	2	-
Coolant Tank Capacity	Liter	250	250	-
Machine Dimension (WxDxH)		2600x1950x1800		
Machine Weight	kg	5300	5350	

Standard Accessories:

- Fanuc Controller
- Collet Chuck
- Workpiece Ejector
- 12-Station Power Turret
- 8-Station Sub Turret
- Auto Lubrication System
- Coolant System
- Sub-Spindle Inner Coolant & Air Blow
- Coolant Level Sensor
- Auto Power Shut-Off
- Signal Tower
- Parts Catcher
- Parts Conveyor

Optional Accessories:

- Live Tool Holder
- Static Tool Holder
- 6" Power Chuck for SP1
- 5" Power Chuck for SP2
- High Pressure Coolant System (20 Bar/ 50 Bar/ 100 Bar)
- Chip Conveyor
- Oil Mist Collector
- Bar Feeder
- Transformer
- Regulator
- Mitsubishi Controller

We reserve the right to modify the above specifications without notice.



Aerospace



Automotive



Electronics



Hydraulics



Medical



Pneumatics



13401 Benson Ave., Chino, CA, 91710

Office: (909) 590-9995

Email: sales@cubicmachinery.com

Website: www.cubicmachinery.com